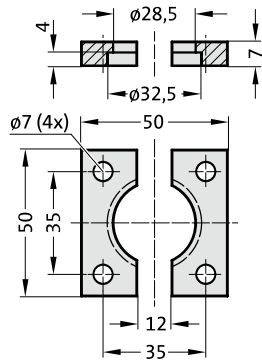


GAS SPRINGS CX - COMPACT XTREME

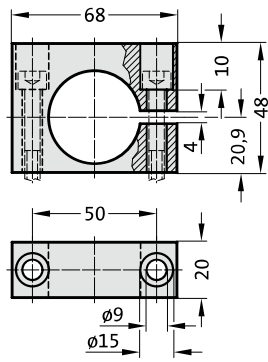


GAS SPRING CX, COMPACT XTREME MOUNTING VARIATIONS

2480.022.00150



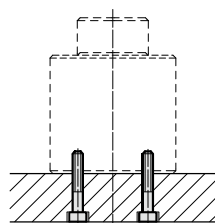
2480.044.03.00150²⁾



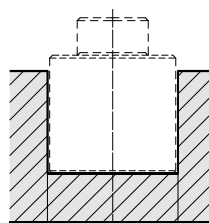
Note:

²⁾ Attention:
The spring force must be absorbed by the stop Surface!

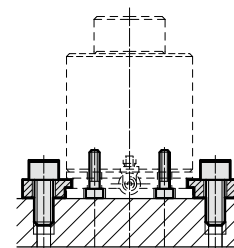
Mounting examples:



see Note!



$\varnothing 32^{+1.0}_{+0.5}$



with Adapter Baseplate

GAS SPRING CX, COMPACT XTREME

Note:

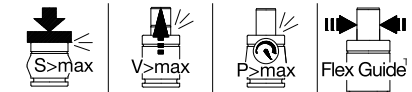
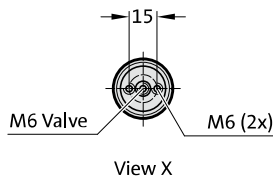
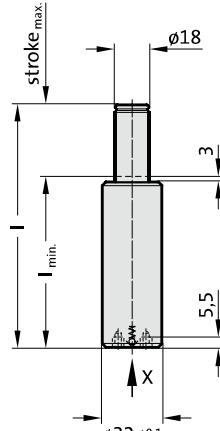
Initial spring force at 200 bar = 500 daN

Order No for spare parts kit: 2497.12.00500

For stroke lengths over 25 mm, the gas pressure springs in the tool should be attached to the base through the threaded holes. When mounting to floor, contact over the entire floor of the cylinder tube must be ensured! Before fitting the adapter base plate remove the valve from the gas spring. If vibration occurs, tighten the fixing screws accordingly.

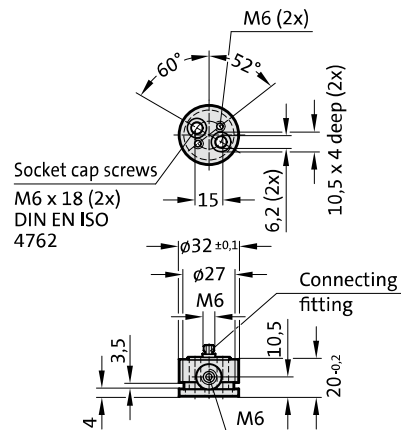
Pressure medium: Nitrogen N₂
 Max. filling pressure: 200 bar
 Min. filling pressure: 25 bar
 Working temperature: 0°C to +80°C
 Temperature related force increase: ± 0.3%/°C
 Max. recommended extensions per minute: approx. 70 to 200 (at 20°C)
 Max. piston speed: 1.6 m/s

2497.12.00500.



2497.00.20.00500

Adapter baseplate with connecting fitting, without valve (only for use with composite connections)

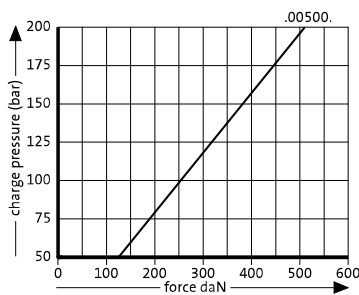


2497.12.00500.

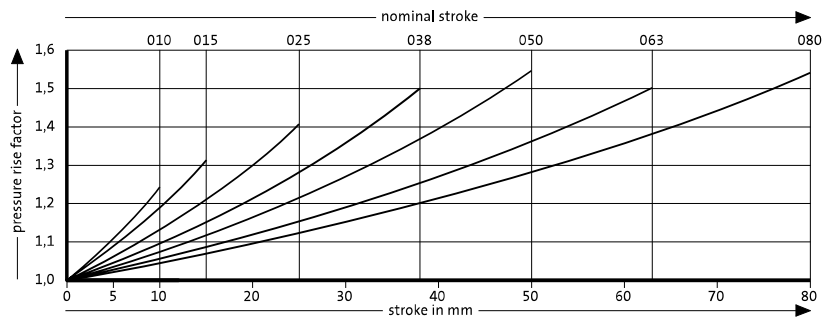
Gas spring CX, Compact Xtreme

Order No	Stroke _{max.} (s)	l _{min.}	l
2497.12.00500.010	10	65	75
2497.12.00500.015	15	70	85
2497.12.00500.025	25	80	105
2497.12.00500.038	38	92	130
2497.12.00500.050	50	105	155
2497.12.00500.063	63	127	190
2497.12.00500.080	80	145	225

Initial spring force versus charge pressure



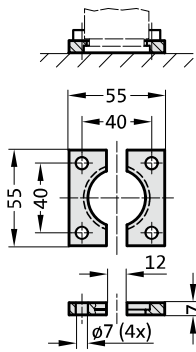
Spring force Diagram displacement versus stroke rise



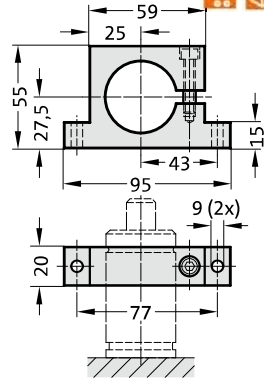
Pressure rise factor accounts for displacement but not external influences!

GAS SPRING CX, COMPACT XTREME MOUNTING VARIATIONS

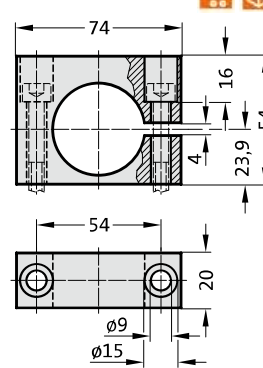
2480.022.00250



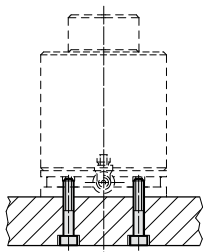
2480.044.00250²⁾



2480.044.03.00250²⁾



Mounting example:

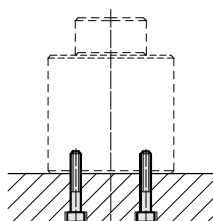


with Adapter Baseplate

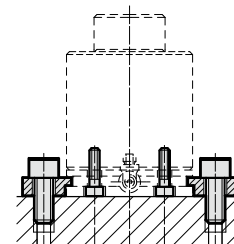
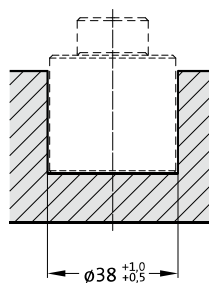
Note:

²⁾ Attention:
The spring force must be absorbed by the stop Surface!

Mounting examples:



see Note!



with Adapter Baseplate

GAS SPRING CX, COMPACT XTREME

Note:

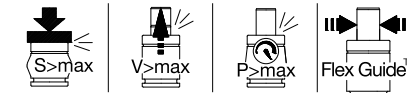
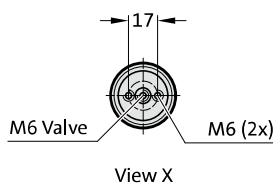
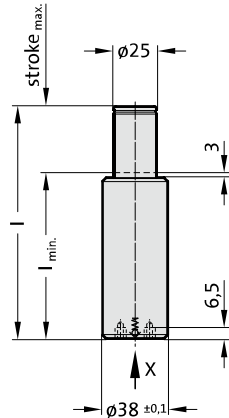
Initial spring force at 200 bar = 1000 daN

Order No for spare parts kit: 2497.12.01000

For stroke lengths over 25 mm, the gas pressure springs in the tool should be attached to the base through the threaded holes. When mounting to floor, contact over the entire floor of the cylinder tube must be ensured! Before fitting the adapter base plate remove the valve from the gas spring. If vibration occurs, tighten the fixing screws accordingly.

Pressure medium: Nitrogen N₂
 Max. filling pressure: 200 bar
 Min. filling pressure: 25 bar
 Working temperature: 0°C to +80°C
 Temperature related force increase: ± 0.3%/°C
 Max. recommended extensions per minute: approx. 70 to 200 (at 20°C)
 Max. piston speed: 1.6 m/s

2497.12.01000.

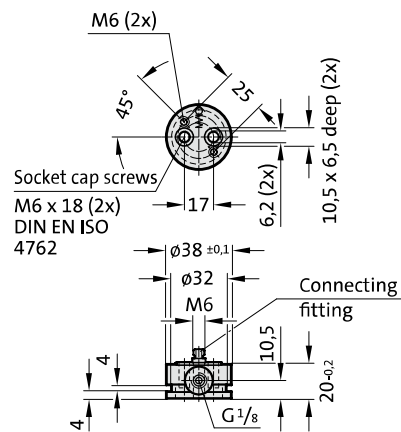


2497.12.01000.

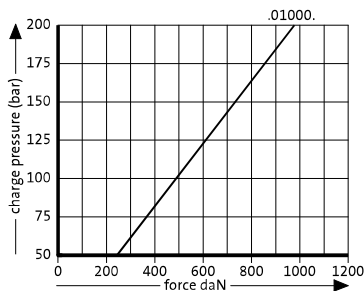
Gas spring CX, Compact Xtreme

2497.00.20.01000

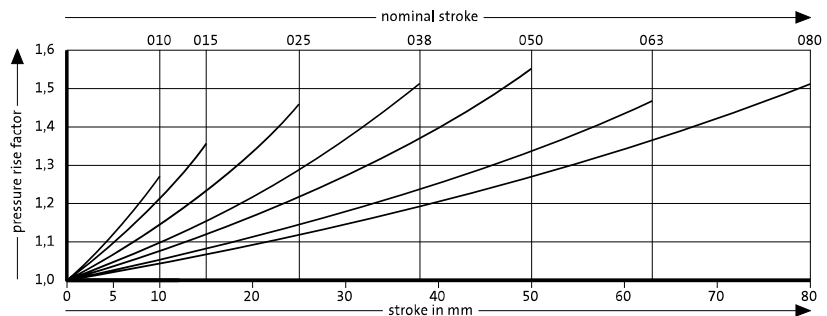
Adapter baseplate with connecting fitting, with valve



Initial spring force versus charge pressure



Spring force Diagram displacement versus stroke rise

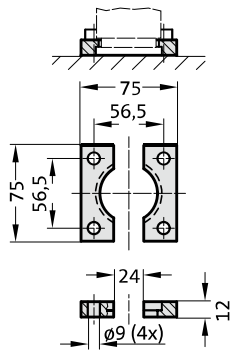


Pressure rise factor accounts for displacement but not external influences!

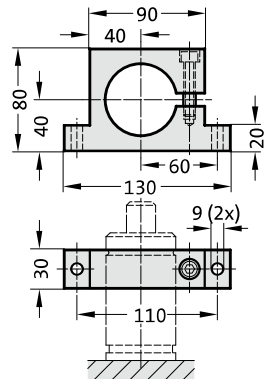
Order No	Stroke _{max.} (s)	l _{min.}	l
2497.12.01000.010	10	65	75
2497.12.01000.015	15	70	85
2497.12.01000.025	25	80	105
2497.12.01000.038	38	97	135
2497.12.01000.050	50	110	160
2497.12.01000.063	63	142	205
2497.12.01000.080	80	160	240

GAS SPRING CX, COMPACT XTREME MOUNTING VARIATIONS

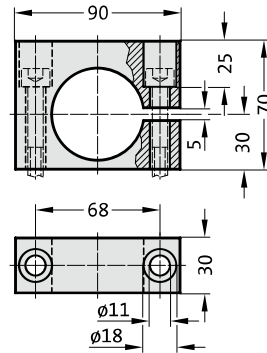
2480.022.00750



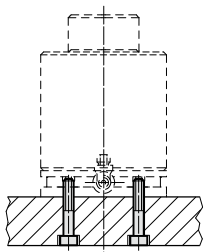
2480.044.00750²⁾



2480.044.03.00750²⁾



Mounting example:

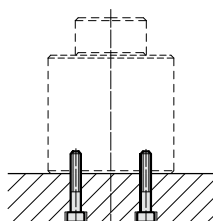


with Adapter Baseplate

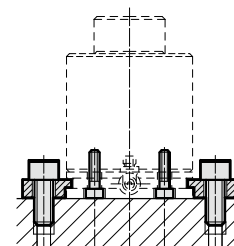
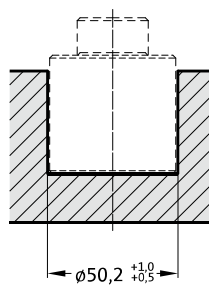
Note:

²⁾ Attention:
The spring force must be absorbed by the stop Surface!

Mounting examples:



see Note!



with Adapter Baseplate

GAS SPRING CX, COMPACT XTREME

Note:

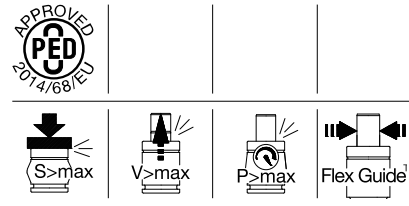
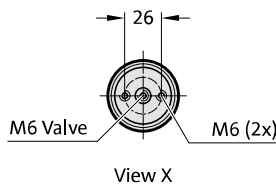
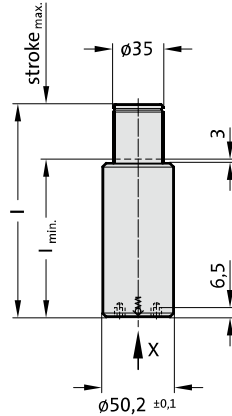
Initial spring force at 200 bar = 1900 daN

Order No for spare parts kit: 2497.12.01900

For stroke lengths over 25 mm, the gas pressure springs in the tool should be attached to the base through the threaded holes. When mounting to floor, contact over the entire floor of the cylinder tube must be ensured! Before fitting the adapter base plate remove the valve from the gas spring. If vibration occurs, tighten the fixing screws accordingly.

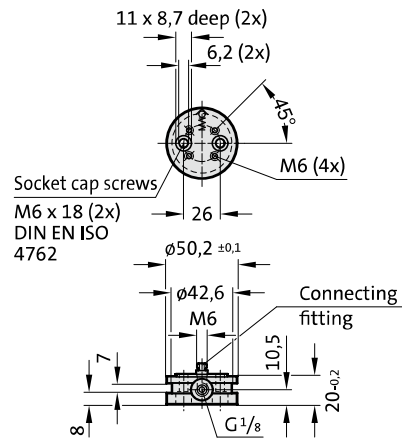
Pressure medium: Nitrogen N₂
 Max. filling pressure: 200 bar
 Min. filling pressure: 25 bar
 Working temperature: 0°C to +80°C
 Temperature related force increase: ± 0.3%/°C
 Max. recommended extensions per minute: approx. 50 to 130 (at 20°C)
 Max. piston speed: 1.6 m/s

2497.12.01900.

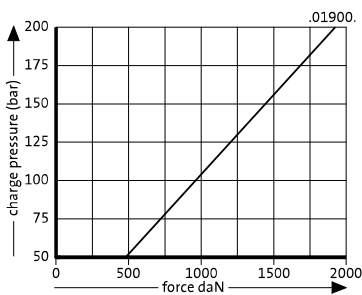


2497.00.20.01900

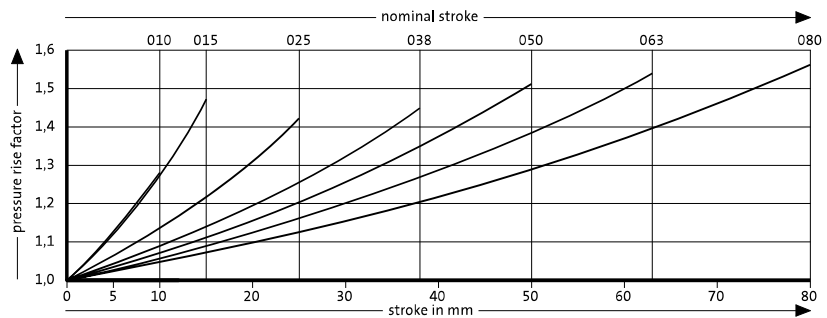
Adapter baseplate with connecting fitting, with valve



Initial spring force versus charge pressure



Spring force Diagram displacement versus stroke rise



Pressure rise factor accounts for displacement but not external influences!

2497.12.01900.

Gas spring CX, Compact Xtreme

Order No	Stroke _{max.} (s)	l _{min.}	l
2497.12.01900.010	10	70	80
2497.12.01900.015	15	80	95
2497.12.01900.025	25	90	115
2497.12.01900.038	38	112	150
2497.12.01900.050	50	125	175
2497.12.01900.063	63	142	205
2497.12.01900.080	80	165	245