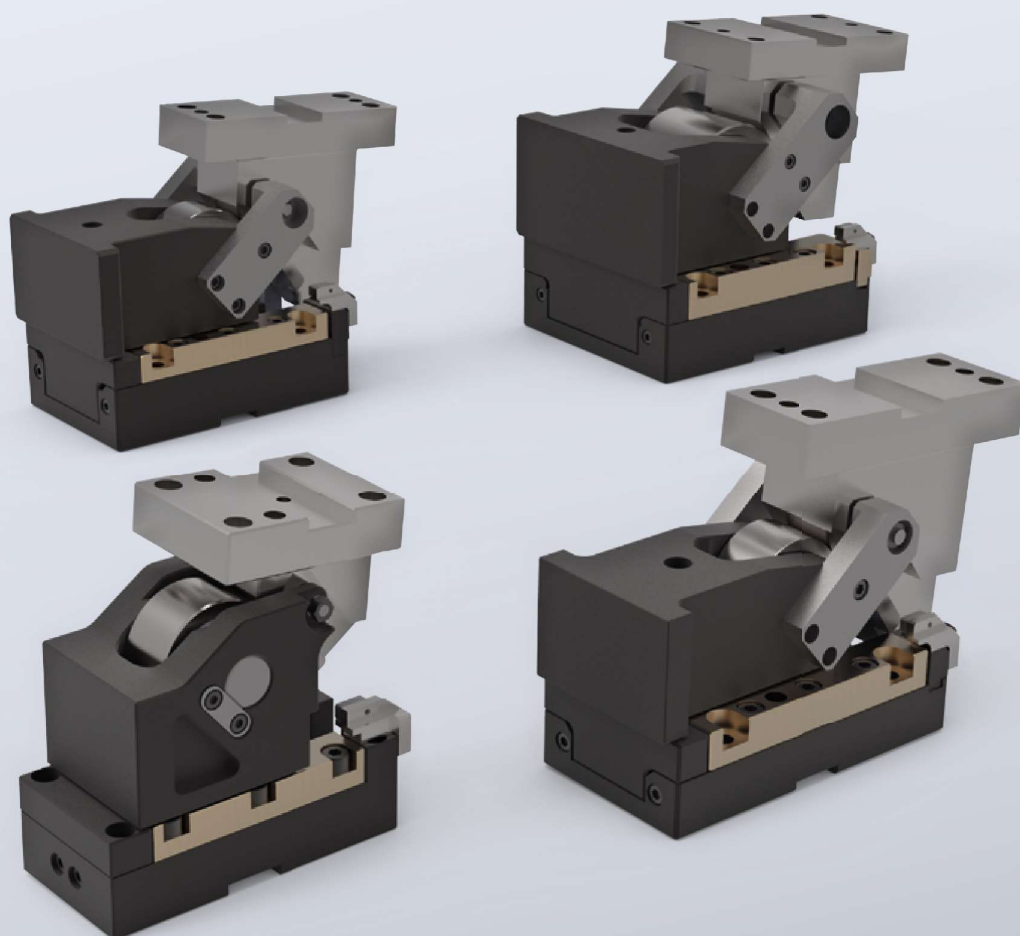


ROLLER SLIDE UNITS FRC
2017.43.



ROLLER SLIDE UNITS FRC 2017.43.



Our roller slide units series 2017.43 have been used in various dies for many years. They allow a working angle which can be individually adapted to the necessary requirements, and are ideal for use in punching operations.

The roller slide units are available in four widths and different stroke lengths. In comparison to cam units, the working angle in the permitted angular range can be selected virtually without restriction and without graduation.

The V-shaped guide, in combination with a solid roller, permits sufficiently high pressing forces and precise guidance. The guide, which is equipped with bronze or sintered sliding elements, reduces the required maintenance work and allows simple repair in the event of wear.

Our roller slide units are reset by gas springs. These gas springs used in these units, with the advanced safety features, are from our Standard Parts product range and offer the highest possible safety standard according to the Pressure Equipment Directive. The cam unit reset can be secured via forced retraction as an option, or as well as end position interrogation via a sensor. To improve operational safety, we recommend the use of forced retractions. The end position can also be queried by means of a sensor. Both versions can be selected as an option.

These cam units can be ordered ex works with a machined work surface according to your data set upon request.

Design features:

- Prism guide against cam base
- Solid roller against driver
- Steel sliding surfaces (induction hardened) / bronze with solid lubricant or sinter
- Different stroke lengths available
- Cam unit in the tool can be removed towards the rear
- Gas spring with safety features
- Forced retraction available as an option
- Idle position sensor monitoring available as an option

Our roller slide units are available in four widths from 78mm to 170mm, and can be used in a working angle range from -20 ° to 50°.

Order No	Width [mm]	Nominal lifting length [mm]*	Performance class [kN]**	Page
2017.43.08.□.□□□.□□□.0	78	30, 50	45	159
2017.43.09.□.□□□.□□□.0	94	50, 80	70	165
2017.43.12.□.□□□.□□□.0	120	50, 80, 100	150	171
2017.43.17.□.□□□.□□□.0	170	50, 80, 100	160	177

*The nominal lift should not be used completely.

In the dimension tables on the following pages, the lifting reserve of 10% recommended by us is taken into account for all values.

**For exact power values, please refer to the force diagrams of the corresponding cam units

assembly instructions	183
-----------------------	-----

The ordering options are explained on the following page.

ROLLER SLIDE UNITS FRC 2017.43.

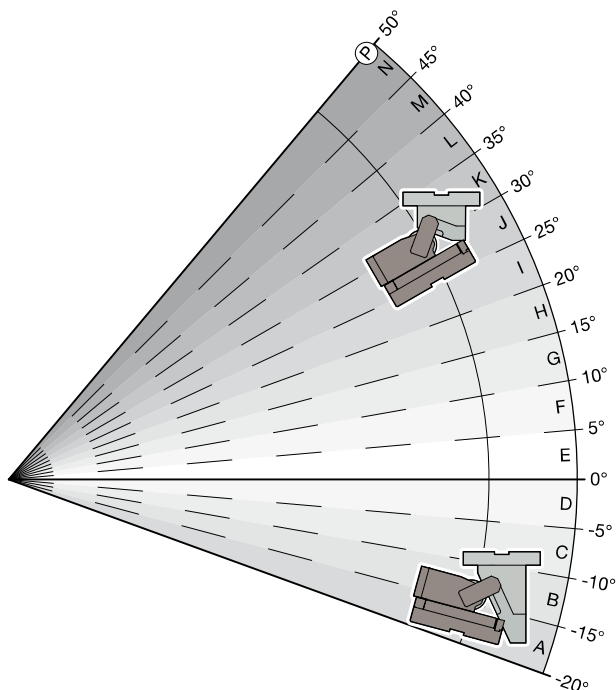
The cam driver is included as standard with our current roller slide unit series. Please note the correct selection of the roller unit for your tool – the cam drivers can be used for the corresponding angle ranges shown below.

Angle ranges:

- .A -20 up to < -15
- .B -15 up to < -10
- .C -10 up to < -5
- .D -5 up to < 0
- .E 0 up to < 5
- .F 5 up to < 10
- .G 10 up to < 15
- .H 15 up to < 20
- .I 20 up to < 25
- .J 25 up to < 30
- .K 30 up to < 35
- .L 35 up to < 40
- .M 40 up to < 45
- .N 45 up to < 50
- .P 50

Order options:

- .0□0 without forced retraction
- .0□1 Forced retraction
- .00□ without end position query
- .01□ End position query via inductive sensor



Ordering Code (example):

FIBRO Roller Slide Units, Series .43, width 94mm	=	2017.43.09.□.□□□.□□□.0
Slide angle $\varepsilon = 12^\circ$	=	G
equipped with forced retraction and inductive sensor	=	011
Stroke 80 mm	=	080
Order number	=	2017.43.09.G. 011. 080. 0

ROLLER SLIDE UNITS FRC 2017.43.



Our roller slide units can be equipped with an optional sensor that can be used to query the initial position. This ensures reliable monitoring of the setup and stamping processes. A potential consequential damage caused by a non-retracted cam slide unit can be avoided.

Technical data

- Inductive query of the home position

General features

- Basic standard IEC 60977-5-2
- Approval cULus / CE / EAC / WEEE

Output / interface

- Switch output PNP make contact (NO)

Electrical features

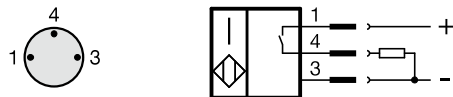
- Rated operation voltage U_e 24V DC
- Operating voltage U_b 10...30V DC

Raccordement électrique

- Connection M8x1 Plug, 3 pole
- Connection type Cables with connectors, 0,30m PUR

Ambient conditions

- Protection type IP 67
- Ambient temperature T_a -25...70°C

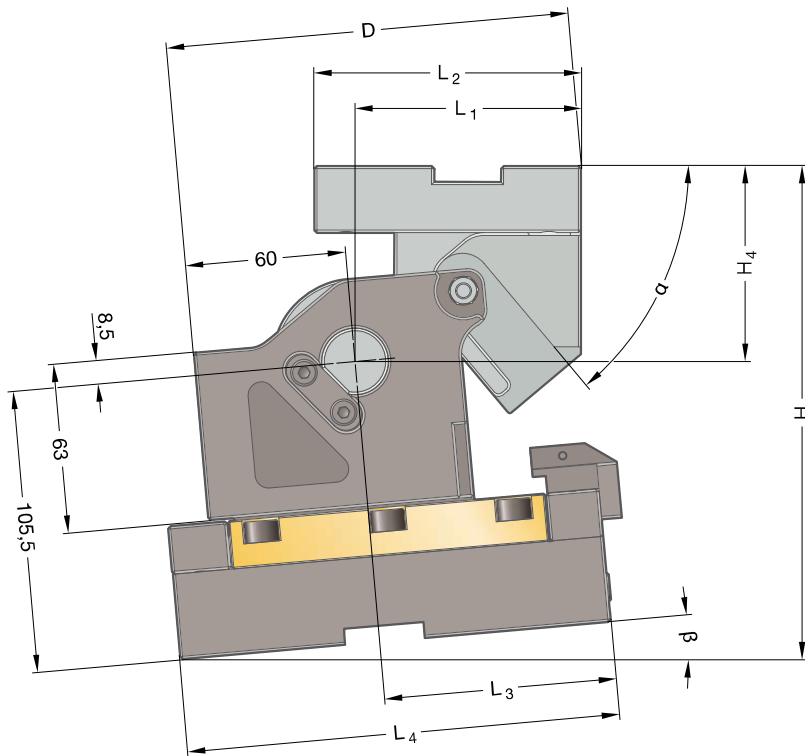
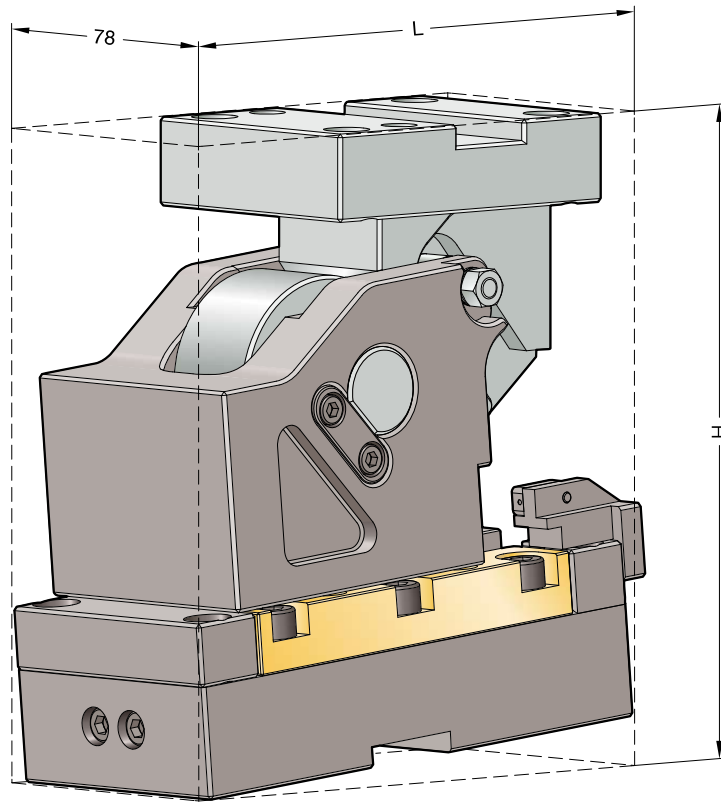


ROLLER SLIDE UNITS FRC 2017.43.08.

Working width: 78 mm
Performance class: 45 kN

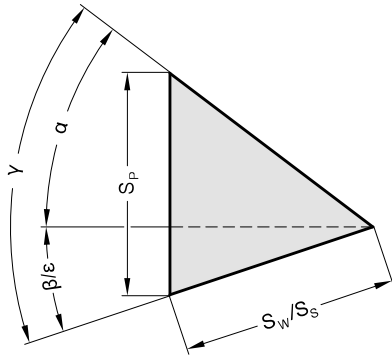


ROLLER SLIDE UNITS FRC 2017.43.08.
SIZE TABLE



ROLLER SLIDE UNITS FRC 2017.43.08.

SIZE TABLE



Fastening

Socket cap screws DIN EN ISO 4762 /
Strength class 8.8
Dowel pins DIN EN ISO 8735

Cam base:

4 × M8
2 × ø8

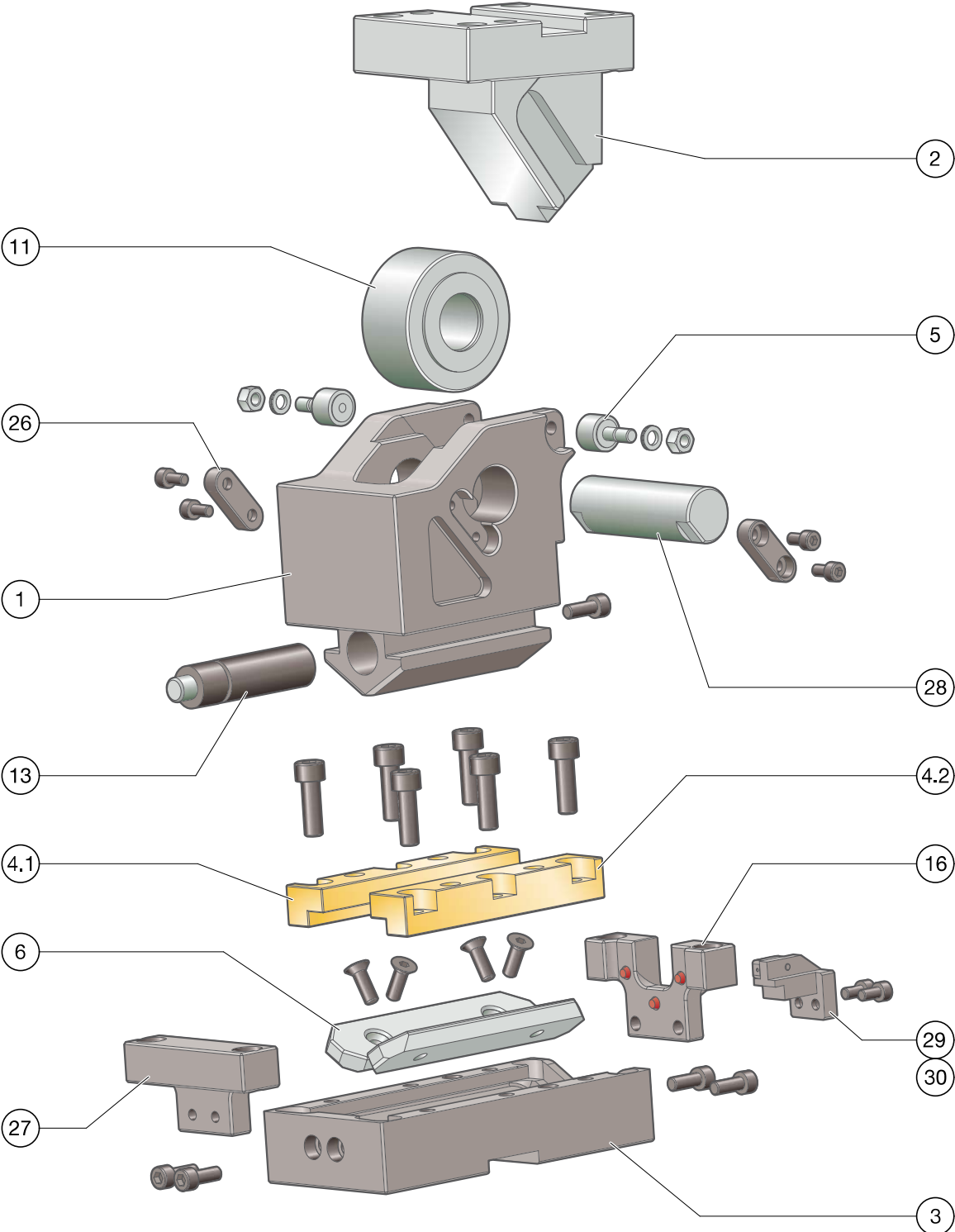
Cam driver:

4 × M12
2 × ø10

Order No	L [mm]"	H [mm]"	H ₄ [mm]"	L ₁ [mm]"	L ₂ [mm]"	L ₃ [mm]"	L ₄ [mm]"	D [mm]"	β [°]"	α [°]"	S _w * [mm]"	S _p [mm]"
2017.43.08.B.0□□.030.0	192,6	197,6	74	89,94	100	84	162	127,7	-15	65	27	48,9
2017.43.08.C.0□□.030.0	182,4	192,5	74	87,22				133,0	-10	60	27	41,4
2017.43.08.D.0□□.030.0	169,6	185,4	73	82,68				136,0	-5	55	27	36,1
2017.43.08.E.0□□.030.0	162,1	178,5	73	84,05				144,1	0	50	27	32,2
2017.43.08.F.0□□.030.0	165,7	183,9	72	80,63				146,6	5	45	27	29,3
2017.43.08.G.0□□.030.0	168,2	189,4	72	82,06				153,3	10	40	27	27,0
2017.43.08.H.0□□.030.0	169,4	199,1	77	77,95				155,2	15	35	27	25,2
2017.43.08.I.0□□.030.0	174,3	205,8	80	76,96				159,7	20	30	27	23,9
2017.43.08.J.0□□.030.0	178,7	210,6	82	68,97				157,2	25	25	27	22,8
2017.43.08.K.0□□.030.0	181,7	215,4	85	64,82				158,6	30	20	27	22,0
2017.43.08.L.0□□.030.0	183,3	218,2	86	61,88				160,6	35	15	27	21,4
2017.43.08.M.0□□.030.0	183,6	220,0	89	51,04				156,3	40	10	27	21,0
2017.43.08.N.0□□.030.0	182,4	218,8	89	54,25				161,3	45	5	27	20,8
2017.43.08.P.0□□.030.0	184,8	218,3	90,74	50,00	161,7	50	0	27	20,7			
2017.43.08.B.0□□.050.0	212,9	212,8	84,5	108,37	120	102	182	142,8	-15	65	45	81,6
2017.43.08.C.0□□.050.0	203,1	203,1	81,5	105,98				150,2	-10	60	45	68,9
2017.43.08.D.0□□.050.0	195,0	198,5	84,5	106,14				158,4	-5	55	45	60,1
2017.43.08.E.0□□.050.0	182,8	180,0	74,5	102,80				162,8	0	50	45	53,6
2017.43.08.F.0□□.050.0	185,7	191,6	79,5	102,13				168,7	5	45	45	48,8
2017.43.08.G.0□□.050.0	187,9	199,3	81,5	94,59				167,3	10	40	45	45,0
2017.43.08.H.0□□.050.0	188,7	211,6	89	89,37				169,4	15	35	45	42,1
2017.43.08.I.0□□.050.0	191,2	218,5	92	82,15				168,7	20	30	45	39,8
2017.43.08.J.0□□.050.0	195,0	222,4	93	77,56				169,6	25	25	45	38,0
2017.43.08.K.0□□.050.0	197,3	227,4	96	67,57				166,5	30	20	45	36,7
2017.43.08.L.0□□.050.0	198,1	232,3	100	69,32				174,1	35	15	45	35,7
2017.43.08.M.0□□.050.0	209,2	230,2	98	56,71				166,4	40	10	45	35,0
2017.43.08.N.0□□.050.0	212,5	230,2	99	54,21				168,3	45	5	45	34,6
2017.43.08.P.0□□.050.0	202,4	229,8	100,74	64,00	178,3	50	0	45	34,5			



ROLLER SLIDE UNITS FRC 2017.43.08. **EXPLODED VIEW**



ROLLER SLIDE UNITS FRC 2017.43.08.

PARTS LIST



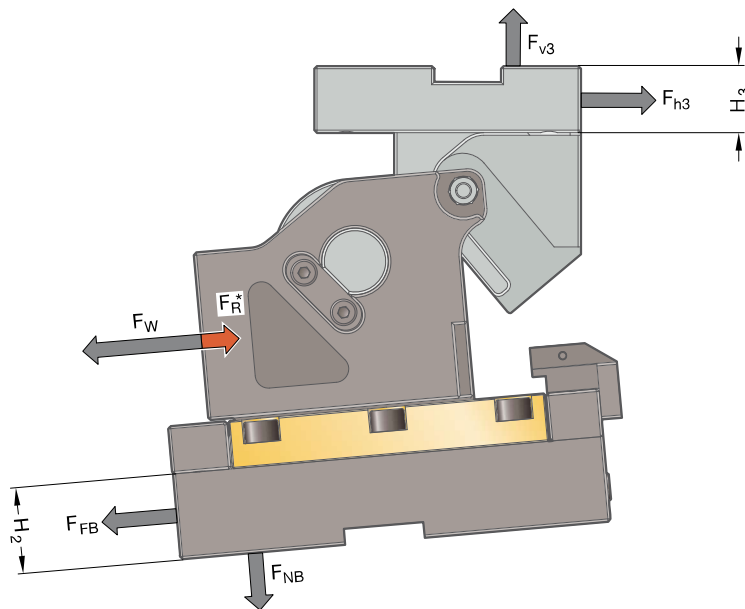
Item No.	Pcs.	Designation	Material	tuned	Spare part
1	1	Cam slider	Ck45	--	--
2	1	Driver	Ck45	--	x
3	1	Cam base	Ck45	--	--
4.1	1	Bracket, left	Bronze with solid lubricant	x	x
4.2	1	Bracket, right	Bronze with solid lubricant	x	x
5	2	Forced retraction		--	x
6	2	Sliding plate	1.1191 with sinter layer	--	x
7					
8					
9					
10					
11	1	Drive roller spare parts set	100Cr6	--	x
12					
13	1	Gas spring	2487.12.00170.□□□	--	x
14					
15					
16	2	Rear cam stop spare parts set	Ck45	--	x
17					
18					
19					
20					
21					
22					
23					
24					
25					
26	2	Feather key	Ck45	--	x
27	1	Front cam stop	Ck45	--	x
28	1	Spindle	16NiCrMo4	--	x
29	1	Sensor mount		--	x
30	1	Sensor		--	x

For inquiries or for spare part orders (x), we require the following data:

- Cam unit order no.
- Cam unit serial number
- Item No. / Designation / Spare part

ROLLER SLIDE UNITS FRC 2017.43.08.

SYSTEM AND SURROUNDING FORCES

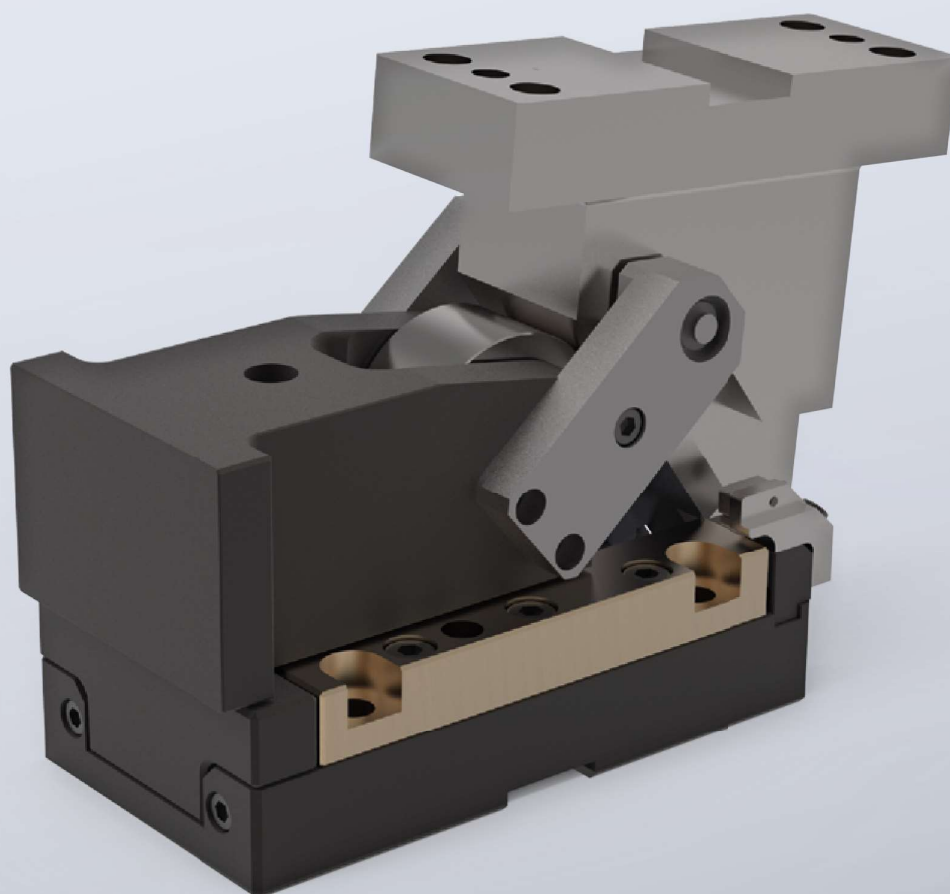


Order No	α [°]	F_W [kN]	F_R [kN]	F_{FB} [kN]	F_{NB} [kN]	F_{h3} [kN]	F_{v3} [kN]	H_2 [mm]	H_3 [mm]
2017.43.08.B.□□□.□□□.0	-15	45	2,4	2,8	40,2	26,4	56,6	10	25
2017.43.08.C.□□□.□□□.0	-10	45	2,4	2,8	40,2	31,2	54,0	10	25
2017.43.08.D.□□□.□□□.0	-5	45	2,4	2,8	40,2	35,8	51,1	10	25
2017.43.08.E.□□□.□□□.0	0	45	2,4	2,8	40,2	40,1	47,8	10	25
2017.43.08.F.□□□.□□□.0	5	45	2,4	2,8	40,2	44,1	44,1	10	25
2017.43.08.G.□□□.□□□.0	10	45	2,4	2,8	40,2	47,8	40,1	10	25
2017.43.08.H.□□□.□□□.0	15	45	2,3	2,8	40,2	51,1	35,8	10	25
2017.43.08.I.□□□.□□□.0	20	45	2,3	2,8	40,2	54,0	31,2	10	25
2017.43.08.J.□□□.□□□.0	25	45	2,3	2,8	40,2	56,6	26,4	10	25
2017.43.08.K.□□□.□□□.0	30	45	2,3	2,8	40,2	58,6	21,3	10	25
2017.43.08.L.□□□.□□□.0	35	45	2,3	2,8	40,2	60,3	16,2	10	25
2017.43.08.M.□□□.□□□.0	40	45	2,3	2,8	40,2	61,5	10,8	10	25
2017.43.08.N.□□□.□□□.0	45	45	2,3	2,8	40,2	62,2	5,4	10	25
2017.43.08.P.□□□.□□□.0	50	45	2,3	2,8	40,2	62,4	0,0	10	25

		Support via cast shoulder		
		Width 78 mm		
-15° up to 50°		26	26	26
Height 63 mm	21	11	45	11
	21	11	45	11
	21	11	45	11

ROLLER SLIDE UNITS **FRC 2017.43.09.**

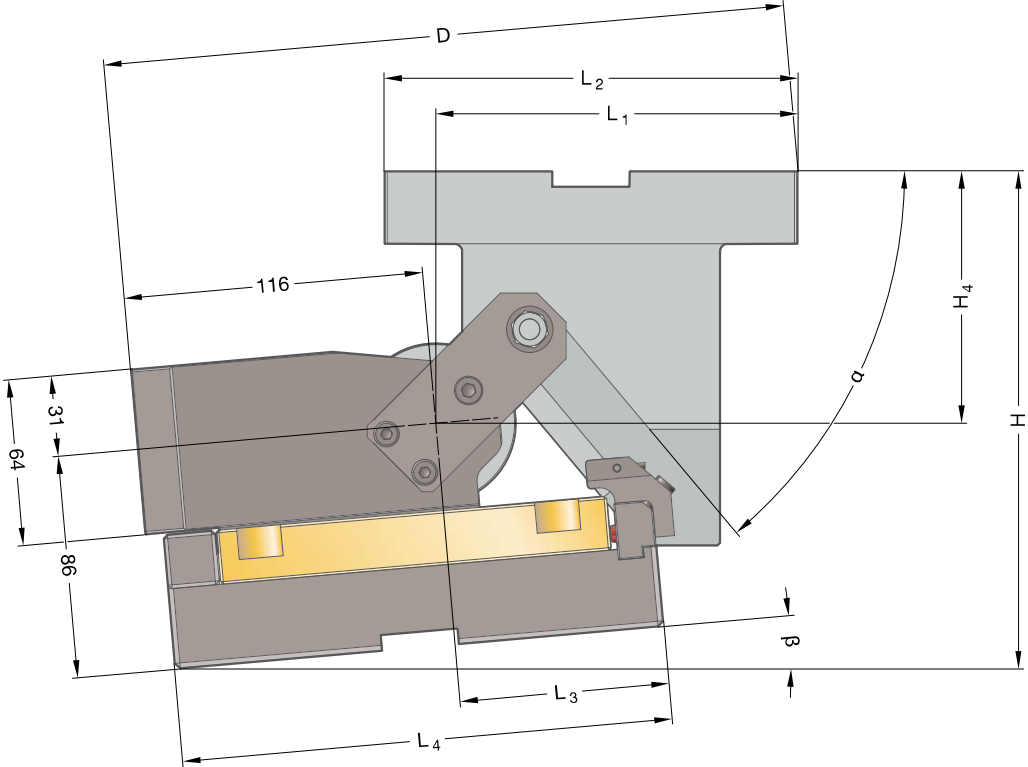
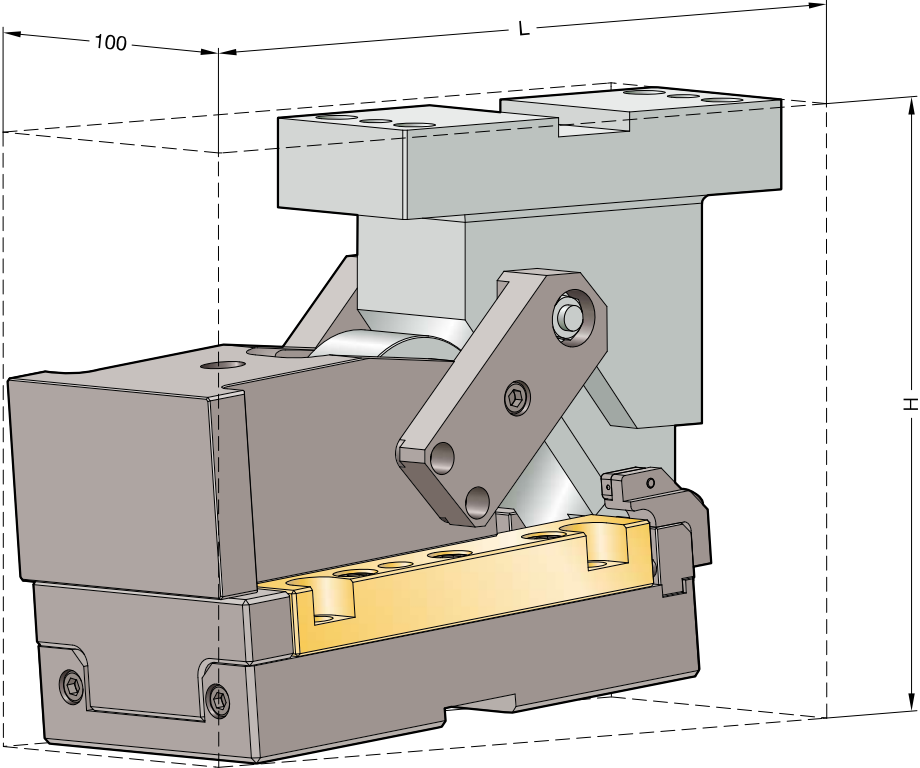
Working width: 94 mm
Performance class: 70 kN





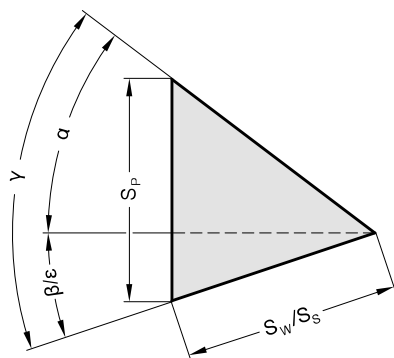
ROLLER SLIDE UNITS FRC 2017.43.09.

SIZE TABLE



ROLLER SLIDE UNITS FRC 2017.43.09.

SIZE TABLE



Fastening

Socket cap screws DIN EN ISO 4762 /
Strength class 8.8
Dowel pins DIN EN ISO 8735

Cam base:

4 x M10
2 x ø10

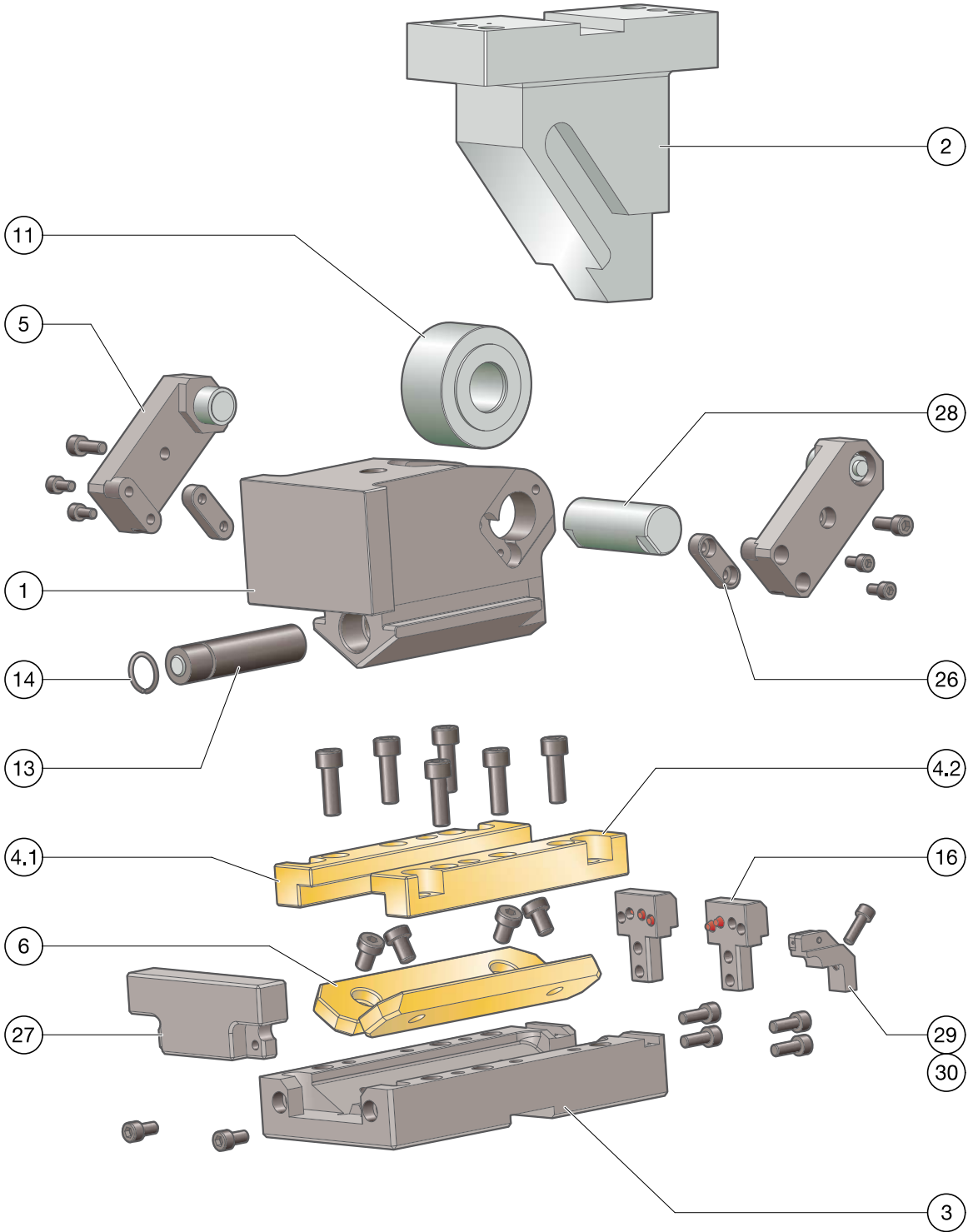
Cam driver:

4 x M12
2 x ø10

Order No	L [mm]	H [mm]	H ₄ [mm]	L ₁ [mm]	L ₂ [mm]	L ₃ [mm]	L ₄ [mm]	D [mm]	β [°]	α [°]	S _w * [mm]	S _p [mm]	B [mm]	H ₁ [mm]	H _w [mm]
2017.43.09.A.0□□.050.0	273,4	220	105	136,85	160			208,7	-20	70	45	100,8	94	86	64
2017.43.09.B.0□□.050.0	270,5	202,7	100	138,17	160			223,6	-15	65	45	81,6	94	86	64
2017.43.09.C.0□□.050.0	265,4	192,9	95	138,21	160			235,6	-10	60	45	68,9	94	86	64
2017.43.09.D.0□□.050.0	259,4	192,3	100	138,36	160			245,1	-5	55	45	60,1	94	86	64
2017.43.09.E.0□□.050.0	250	191	105	134,03	160			250	0	50	45	53,6	94	86	64
2017.43.09.F.0□□.050.0	252,1	210,6	115	133,84	160			259,4	5	45	45	48,8	94	86	64
2017.43.09.G.0□□.050.0	249,7	214,5	110	130,06	160	76	190	263,2	10	40	45	45,0	94	86	64
2017.43.09.H.0□□.050.0	246,4	232,6	120	126,33	160			269,1	15	35	45	42,1	94	86	64
2017.43.09.I.0□□.050.0	240,1	237,8	118	120,47	160			269,6	20	30	45	39,8	94	86	64
2017.43.09.J.0□□.050.0	235,9	251,1	125	117,63	160			275,4	25	25	45	38,0	94	86	64
2017.43.09.K.0□□.050.0	231,6	243,5	112	115,67	160			272,2	30	20	45	36,7	94	86	64
2017.43.09.L.0□□.050.0	224,4	253,8	118	110,6	160			274,3	35	15	45	35,7	94	86	64
2017.43.09.M.0□□.050.0	222,3	252,2	113	103,08	160			267,6	40	10	45	35,0	94	86	64
2017.43.09.N.0□□.050.0	218,5	258,4	117	102,07	160			270,9	45	5	45	34,6	94	86	64
2017.43.09.P.0□□.050.0	213	253,6	111	83	160			254,4	50	0	45	34,5	94	86	64
2017.43.09.A.0□□.080.0	317	380	175	177,6	220			103	220	223	72	161,3	94	86	64
2017.43.09.B.0□□.080.0	317,8	320	150	182,48	220			253,4	-15	65	72	130,5	94	86	64
2017.43.09.C.0□□.080.0	301,3	250	135	171,19	220			261,1	-10	60	72	110,3	94	86	64
2017.43.09.D.0□□.080.0	297,4	225	130	173,36	220			277,4	-5	55	72	96,2	94	86	64
2017.43.09.E.0□□.080.0	287,4	221	135	170,4	220			286,4	0	50	72	85,8	94	86	64
2017.43.09.F.0□□.080.0	289,1	240,1	145	170,84	220			298,8	5	45	72	78,0	94	86	64
2017.43.09.G.0□□.080.0	286,5	245	140	166,86	220			304,6	10	40	72	72,0	94	86	64
2017.43.09.H.0□□.080.0	282	263,4	150	161,89	220	103	220	311,2	15	35	72	67,3	94	86	64
2017.43.09.I.0□□.080.0	273,1	268,8	148	153,45	220			310,8	20	30	72	63,7	94	86	64
2017.43.09.J.0□□.080.0	275	282,4	155	156,8	220			323,6	25	25	72	60,9	94	86	64
2017.43.09.K.0□□.080.0	261,1	280	147	145,14	220			315,2	30	20	72	58,7	94	86	64
2017.43.09.L.0□□.080.0	262,7	290,6	153	149,92	220			326,6	35	15	72	57,1	94	86	64
2017.43.09.M.0□□.080.0	245,2	274,1	133	136,44	200			306	40	10	72	56,0	94	86	64
2017.43.09.N.0□□.080.0	237,6	283,5	140	129,93	200			306,9	45	5	72	55,4	94	86	64
2017.43.09.P.0□□.080.0	235	270,9	126	97	200			274,9	50	0	72	55,2	94	86	64



ROLLER SLIDE UNITS FRC 2017.43.09. **EXPLODED VIEW**



ROLLER SLIDE UNITS FRC 2017.43.09.

PARTS LIST



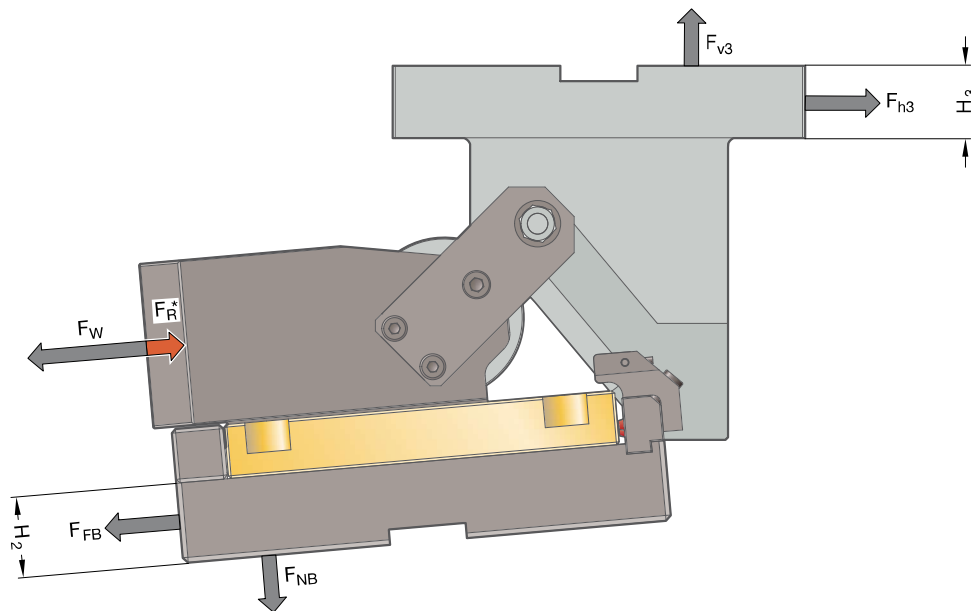
Item No.	Pcs.	Designation	Material	tuned	Spare part
1	1	Cam slider	Ck45	--	--
2	1	Driver	Ck45	--	x
3	1	Cam base	Ck45	--	--
4.1	1	Bracket, left	Bronze with solid lubricant	x	x
4.2	1	Bracket, right	Bronze with solid lubricant	x	x
5	2	Forced retraction	Ck45	--	x
6	2	Sliding plate	Bronze with solid lubricant	--	x
7					
8					
9					
10					
11	1	Drive roller spare parts set	100Cr6	--	x
12					
13	1	Gas spring	2487.12.00170.□□□	--	x
14	1	Circlip		--	x
15					
16	2	Rear cam stop spare parts set	Ck45	--	x
17					
18					
19					
20					
21					
22					
23					
24					
25					
26	2	Feather key	Ck45	--	x
27	1	Front cam stop	Ck45	--	x
28	1	Spindle	16NiCrMo4	--	x
29	1	Sensor mount		--	x
30	1	Sensor		--	x

For inquiries or for spare part orders (x), we require the following data:

- Cam unit order no.
- Cam unit serial number
- Item No. / Designation / Spare part

ROLLER SLIDE UNITS FRC 2017.43.09.

SYSTEM AND SURROUNDING FORCES



Order No	α [°]	F_W [kN]	F_R [kN]	F_{FB} [kN]	F_{NB} [kN]	F_{h3} [kN]	F_{v3} [kN]	H_2 [mm]	H_3 [mm]
2017.43.09.A.□□□.□□□.0	-20	72	2,7	4,5	64,3	34,2	93,8	10	28
2017.43.09.B.□□□.□□□.0	-15	72	2,7	4,5	64,3	42,2	90,5	10	28
2017.43.09.C.□□□.□□□.0	-10	72	2,7	4,5	64,3	49,9	86,5	10	28
2017.43.09.D.□□□.□□□.0	-5	72	2,7	4,5	64,3	57,3	81,8	10	28
2017.43.09.E.□□□.□□□.0	0	72	2,7	4,5	64,3	64,2	76,5	10	28
2017.43.09.F.□□□.□□□.0	5	72	2,7	4,5	64,3	70,6	70,6	10	28
2017.43.09.G.□□□.□□□.0	10	72	2,7	4,5	64,3	76,5	64,2	10	28
2017.43.09.H.□□□.□□□.0	15	72	2,7	4,5	64,3	81,8	57,3	10	28
2017.43.09.I.□□□.□□□.0	20	72	2,7	4,5	64,3	86,5	49,9	10	28
2017.43.09.J.□□□.□□□.0	25	72	2,7	4,5	64,3	90,5	42,2	10	28
2017.43.09.K.□□□.□□□.0	30	72	2,7	4,5	64,3	93,8	34,2	10	28
2017.43.09.L.□□□.□□□.0	35	72	2,7	4,5	64,3	96,4	25,8	10	28
2017.43.09.M.□□□.□□□.0	40	72	2,7	4,5	64,3	98,3	17,3	10	28
2017.43.09.N.□□□.□□□.0	45	72	2,6	4,5	64,3	99,5	8,7	10	28
2017.43.09.P.□□□.□□□.0	50	72	2,6	4,5	64,3	99,8	0,0	10	28

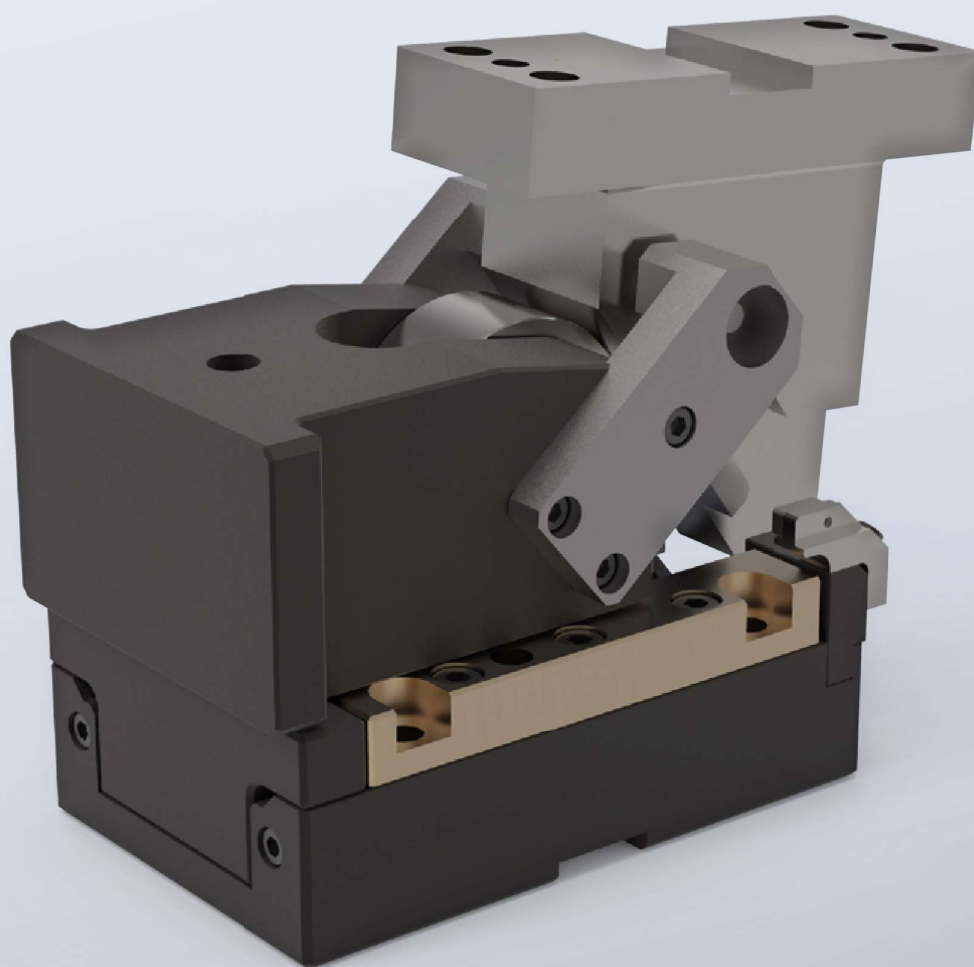
Support via cast shoulder

Width 94 mm

		-20° up to 50°	30	34	30
Height 64 mm	21	10	15	10	
	21	15	53	15	
	22	20	72	20	

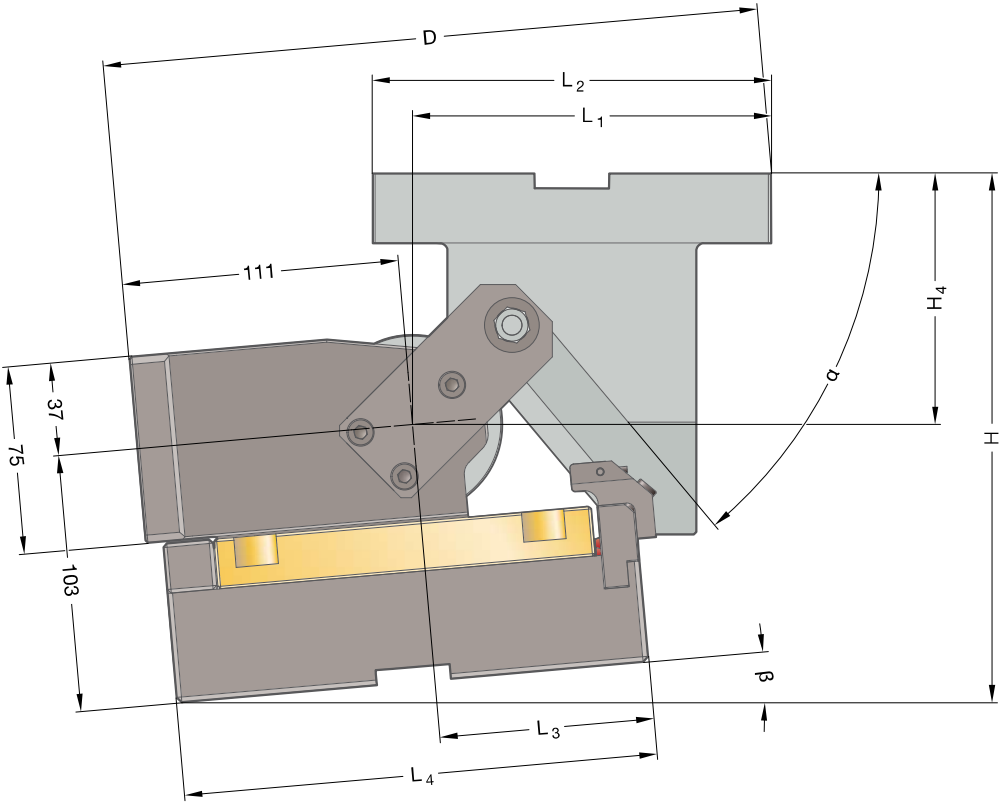
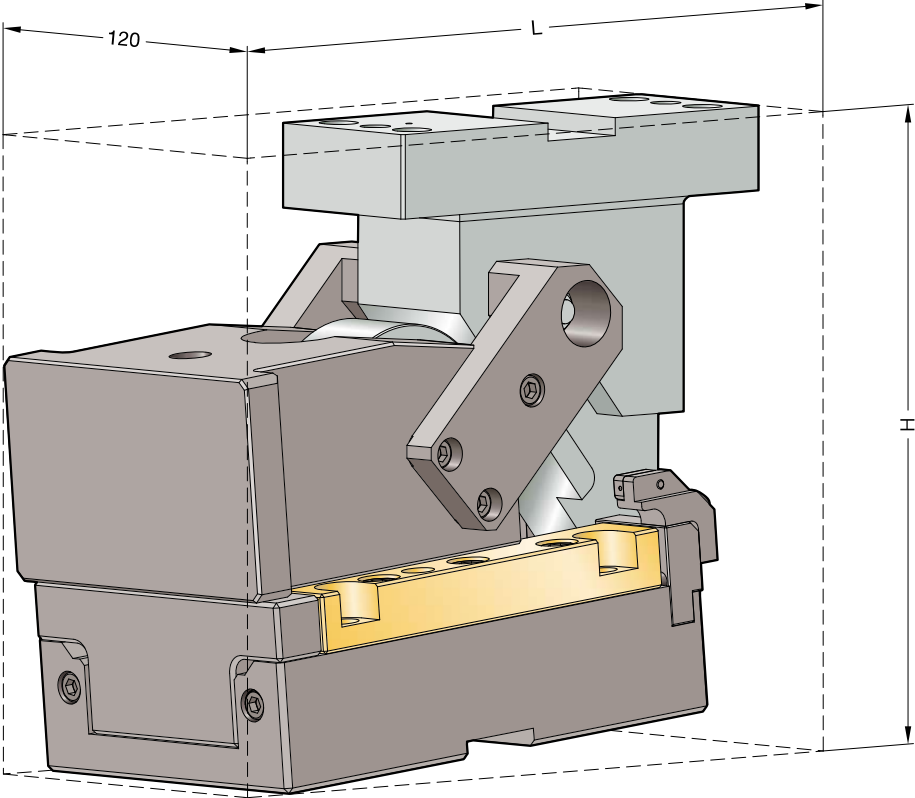
ROLLER SLIDE UNITS FRC 2017.43.12.

Working width: 120 mm
Performance class: 150 kN



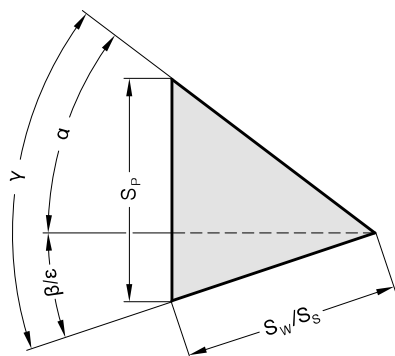


ROLLER SLIDE UNITS FRC 2017.43.12. SIZE TABLE



ROLLER SLIDE UNITS FRC 2017.43.12.

SIZE TABLE



Fastening

Socket cap screws DIN EN ISO 4762 /
Strength class 8.8

Dowel pins DIN EN ISO 8735

Cam base:

4 x M10

2 x ø10

Cam driver:

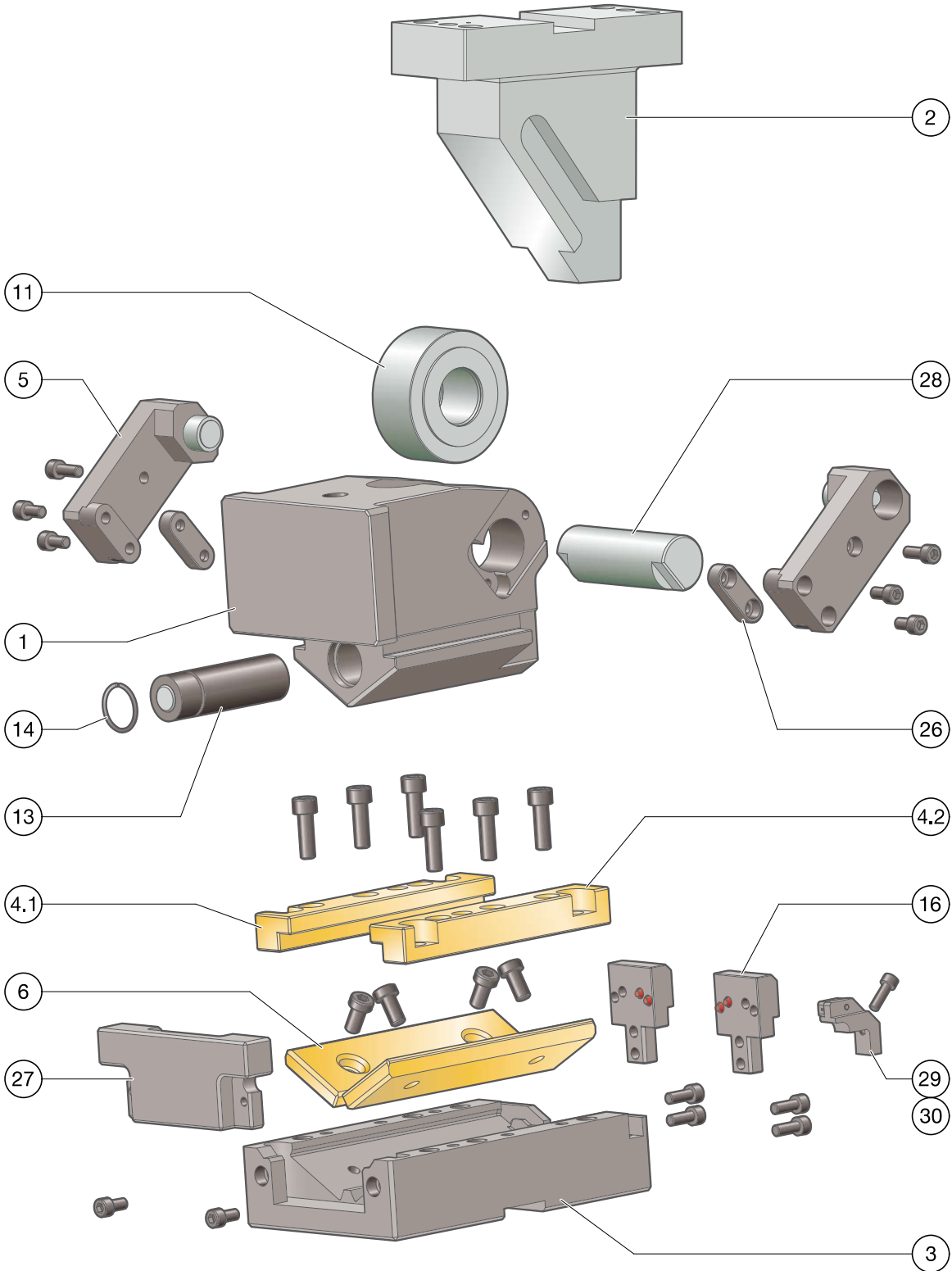
4 x M12

2 x ø10

Order No	L [mm]	H [mm]	H ₄ [mm]	L ₁ [mm]	L ₂ [mm]	L ₃ [mm]	L ₄ [mm]	D [mm]	β [°]	α [°]	S _w * [mm]	S _p [mm]
2017.43.12.A.0□□.050.0	279,8	229,5	105	142,17	160			208,7	-20	70	45	100,8
2017.43.12.B.0□□.050.0	275,6	220,5	100	143,69	160			223,9	-15	65	45	81,6
2017.43.12.C.0□□.050.0	269,2	210,5	95	143,98	160			236,3	-10	60	45	68,9
2017.43.12.D.0□□.050.0	262	209,7	100	144,46	160			246,2	-5	55	45	60,1
2017.43.12.E.0□□.050.0	251,6	208	105	140,56	160			251,6	0	50	45	53,6
2017.43.12.F.0□□.050.0	249,7	232,1	120	135,91	160			256,9	5	45	45	48,8
2017.43.12.G.0□□.050.0	247,6	235,4	115	131,88	160			260,8	10	40	45	45,0
2017.43.12.H.0□□.050.0	244,7	252,7	125	127,91	160	81	190	266,9	15	35	45	42,1
2017.43.12.I.0□□.050.0	244	254	120	127	160			271,4	20	30	45	39,8
2017.43.12.J.0□□.050.0	235	269,4	130	118,74	160			273,6	25	25	45	38,0
2017.43.12.K.0□□.050.0	236,3	260,7	117	116,55	160			270,4	30	20	45	36,7
2017.43.12.L.0□□.050.0	237,6	268,9	122	114,99	160			275,2	35	15	45	35,7
2017.43.12.M.0□□.050.0	237,1	267	118	103,52	160			266,1	40	10	45	35,0
2017.43.12.N.0□□.050.0	234,8	271,9	122	102,29	160			269,6	45	5	45	34,6
2017.43.12.P.0□□.050.0	230,7	265,7	116	80	160			251,3	50	0	45	34,5
2017.43.12.A.0□□.080.0	323,4	380	175	182,92	220			108	220	223	72	161,3
2017.43.12.B.0□□.080.0	322,8	320	150	187,99	220			253,8	-15	65	72	130,5
2017.43.12.C.0□□.080.0	305,1	255,2	135	176,97	220			261,8	-10	60	72	110,3
2017.43.12.D.0□□.080.0	300	242	130	179,47	220			278,5	-5	55	72	96,2
2017.43.12.E.0□□.080.0	287,9	238	135	176,93	220			287,9	0	50	72	85,8
2017.43.12.F.0□□.080.0	286,7	262,4	150	172,91	220			296,3	5	45	72	78,0
2017.43.12.G.0□□.080.0	284,4	265,9	145	168,68	220			302,3	10	40	72	72,0
2017.43.12.H.0□□.080.0	280,3	283,5	155	163,47	220	108	220	309	15	35	72	67,3
2017.43.12.I.0□□.080.0	276,9	285,1	150	159,98	220			312,6	20	30	72	63,7
2017.43.12.J.0□□.080.0	274,1	300,7	160	157,91	220			321,7	25	25	72	60,9
2017.43.12.K.0□□.080.0	260,7	297,2	152	146,03	220			313,5	30	20	72	58,7
2017.43.12.L.0□□.080.0	266,5	305,6	157	154,31	220			327,5	35	15	72	57,1
2017.43.12.M.0□□.080.0	257,8	288,9	138	136,88	200			304,6	40	10	72	56,0
2017.43.12.N.0□□.080.0	253,9	297	145	130,15	200			305,6	45	5	72	55,4
2017.43.12.P.0□□.080.0	248	283	131	94	200			271,8	50	0	72	55,2
2017.43.12.A.0□□.100.0	336,2	380	145	193,84	220			243,6	-20	70	90	201,6
2017.43.12.B.0□□.100.0	331,8	320	135	194,99	220			264,4	-15	65	90	163,1
2017.43.12.C.0□□.100.0	327,3	250	100	197,17	220			287,8	-10	60	90	137,9
2017.43.12.D.0□□.100.0	323	225	100	200,47	220			302	-5	55	90	120,2
2017.43.12.E.0□□.100.0	304,7	218	115	193,71	220			304,7	0	50	90	107,3
2017.43.12.F.0□□.100.0	301,7	247,5	135	187,91	220			310	5	45	90	97,5
2017.43.12.G.0□□.100.0	302,3	251,2	130	186,55	220			317,3	10	40	90	90,0
2017.43.12.H.0□□.100.0	301,7	269	140	184,89	220	126	240	325,8	15	35	90	84,2
2017.43.12.I.0□□.100.0	294,3	275,8	140	177,3	220			325,5	20	30	90	79,6
2017.43.12.J.0□□.100.0	284,9	296,5	155	168,63	220			329,3	25	25	90	76,1
2017.43.12.K.0□□.100.0	275,2	293,2	147	159,76	220			322,9	30	20	90	73,4
2017.43.12.L.0□□.100.0	274,4	306,8	157	154,31	220			327,5	35	15	90	71,4
2017.43.12.M.0□□.100.0	271,5	288,2	136	148,22	200			312	40	10	90	70,0
2017.43.12.N.0□□.100.0	266,6	297,4	144	141,58	200			312,9	45	5	90	69,2
2017.43.12.P.0□□.100.0	259,6	284,5	131	110	200			282,1	50	0	90	68,9



ROLLER SLIDE UNITS FRC 2017.43.12. **EXPLODED VIEW**



ROLLER SLIDE UNITS FRC 2017.43.12.

PARTS LIST



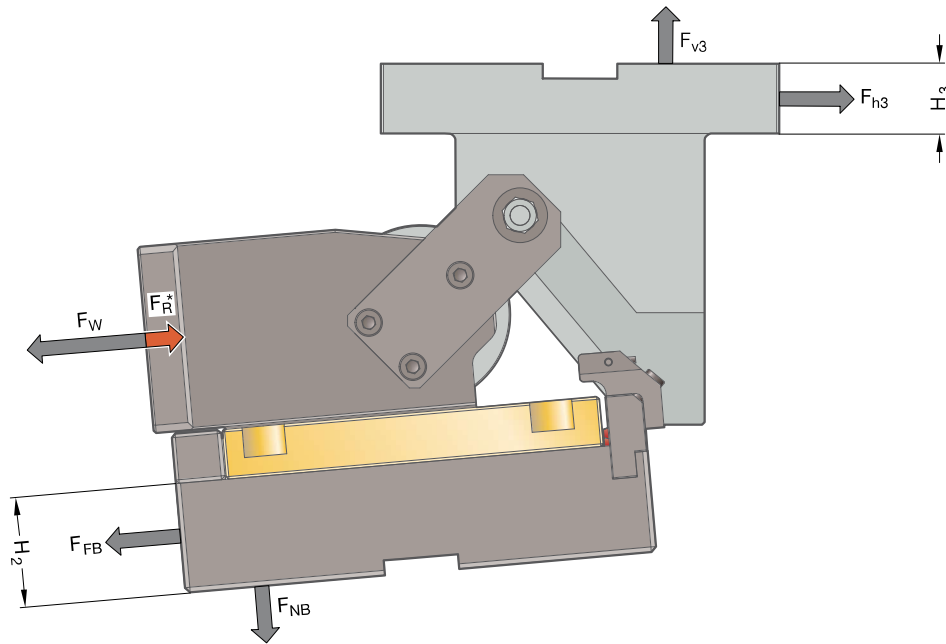
Item No.	Pcs.	Designation	Material	tuned	Spare part
1	1	Cam slider	Ck45	--	--
2	1	Driver	Ck45	--	x
3	1	Cam base	Ck45	--	--
4.1	1	Bracket, left	Bronze with solid lubricant	x	x
4.2	1	Bracket, right	Bronze with solid lubricant	x	x
5	2	Forced retraction	Ck45	--	x
6	2	Sliding plate	Bronze with solid lubricant	--	x
7					
8					
9					
10					
11	1	Drive roller spare parts set	100Cr6	--	x
12					
13	1	Gas spring	2487.12.00320.□□□	--	x
14	1	Circlip		--	x
15					
16	2	Rear cam stop spare parts set	Ck45	--	x
17					
18					
19					
20					
21					
22					
23					
24					
25					
26	2	Feather key	Ck45	--	x
27	1	Front cam stop	Ck45	--	x
28	1	Spindle	16NiCrMo4	--	x
29	1	Sensor mount		--	x
30	1	Sensor		--	x

For inquiries or for spare part orders (x), we require the following data:

- Cam unit order no.
- Cam unit serial number
- Item No. / Designation / Spare part

ROLLER SLIDE UNITS FRC 2017.43.12.

SYSTEM AND SURROUNDING FORCES



Order No	α [°]	F_W [kN]	F_R [kN]	F_{FB} [kN]	F_{NB} [kN]	F_{h3} [kN]	F_{v3} [kN]	H_2 [mm]	H_3 [mm]
2017.43.12.A.□□□.□□□.0	-20	153	5,2	9,6	136,7	72,6	199,4	10	28
2017.43.12.B.□□□.□□□.0	-15	153	5,2	9,6	136,7	89,7	192,3	10	28
2017.43.12.C.□□□.□□□.0	-10	153	5,1	9,6	136,7	106,1	183,8	10	28
2017.43.12.D.□□□.□□□.0	-5	153	5,1	9,6	136,7	121,7	173,8	10	28
2017.43.12.E.□□□.□□□.0	0	153	5,1	9,6	136,7	136,4	162,5	10	28
2017.43.12.F.□□□.□□□.0	5	153	5,1	9,6	136,7	150,0	150,0	10	28
2017.43.12.G.□□□.□□□.0	10	153	5,1	9,6	136,7	162,5	136,4	10	28
2017.43.12.H.□□□.□□□.0	15	153	5,1	9,6	136,7	173,8	121,7	10	28
2017.43.12.I.□□□.□□□.0	20	153	5,0	9,6	136,7	183,8	106,1	10	28
2017.43.12.J.□□□.□□□.0	25	153	5,0	9,6	136,7	192,3	89,7	10	28
2017.43.12.K.□□□.□□□.0	30	153	5,0	9,6	136,7	199,4	72,6	10	28
2017.43.12.L.□□□.□□□.0	35	153	5,0	9,6	136,7	204,9	54,9	10	28
2017.43.12.M.□□□.□□□.0	40	153	5,0	9,6	136,7	209,0	36,8	10	28
2017.43.12.N.□□□.□□□.0	45	153	5,0	9,6	136,7	211,4	18,5	10	28
2017.43.12.P.□□□.□□□.0	50	153	5,0	9,6	136,7	212,2	0,0	10	28

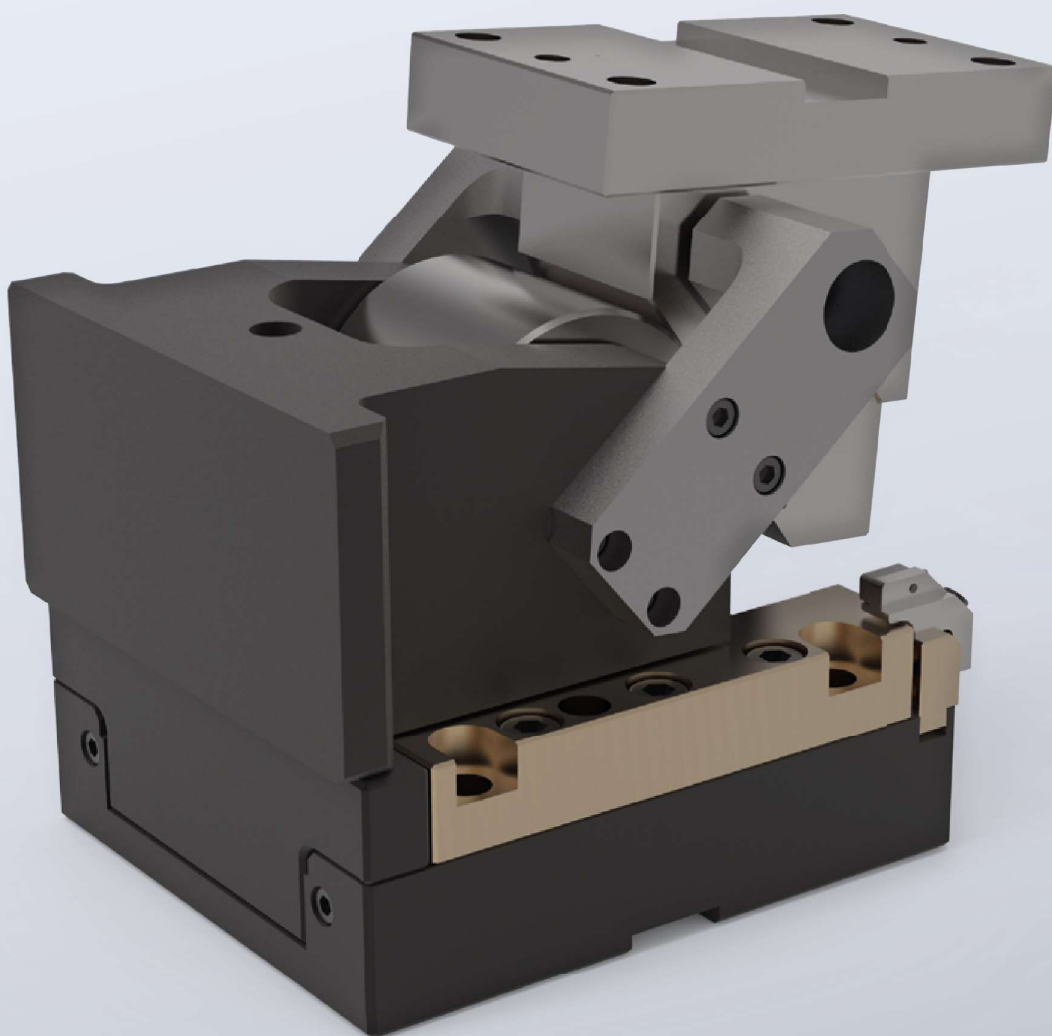
Support via cast shoulder

Width 120 mm

-20° up to 50°		40	40	40
Height 75 mm	24	39	72	39
	26	47	122	47
	25	52	153	52

ROLLER SLIDE UNITS FRC
2017.43.17.

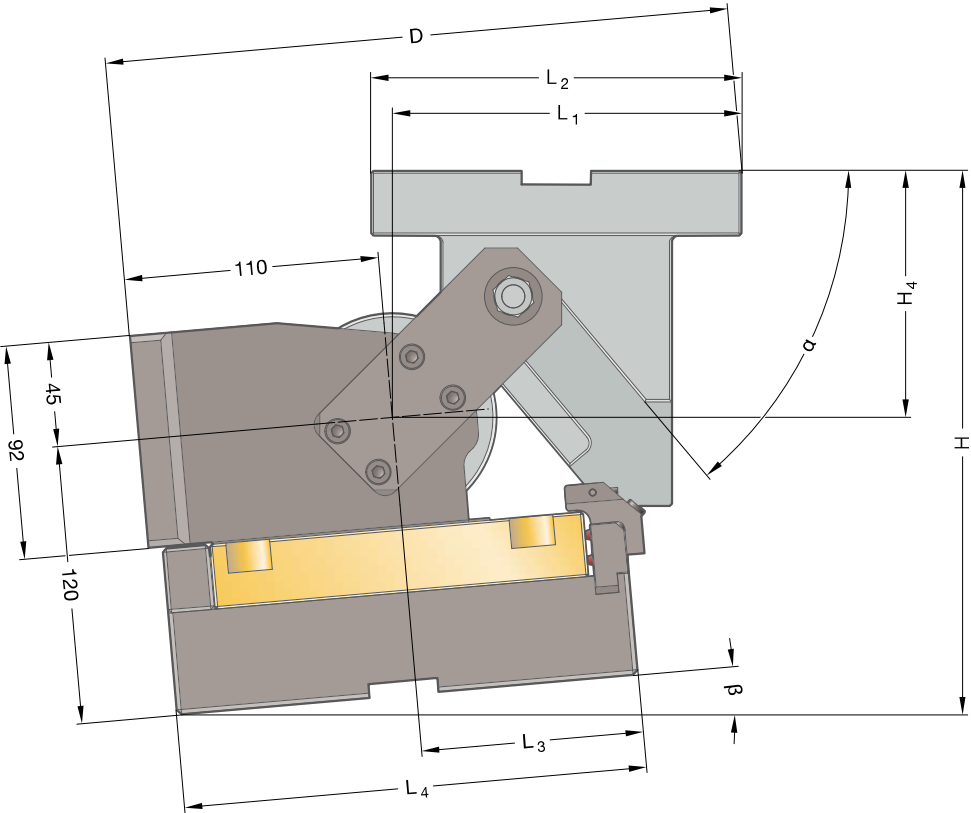
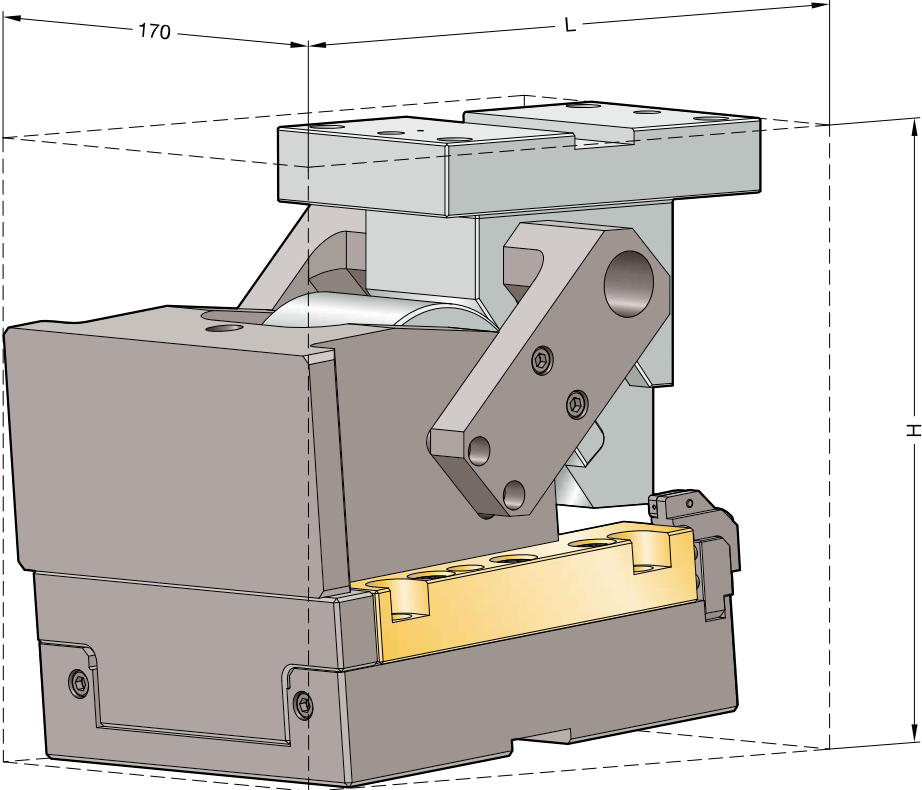
Working width: 170 mm
Performance class: 160 kN





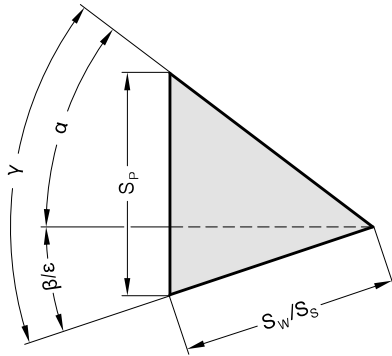
ROLLER SLIDE UNITS FRC 2017.43.17.

SIZE TABLE



ROLLER SLIDE UNITS FRC 2017.43.17.

SIZE TABLE



Fastening

Socket cap screws DIN EN ISO 4762 /
Strength class 8.8
Dowel pins DIN EN ISO 8735

Cam base:

4 x M12
2 x ø12

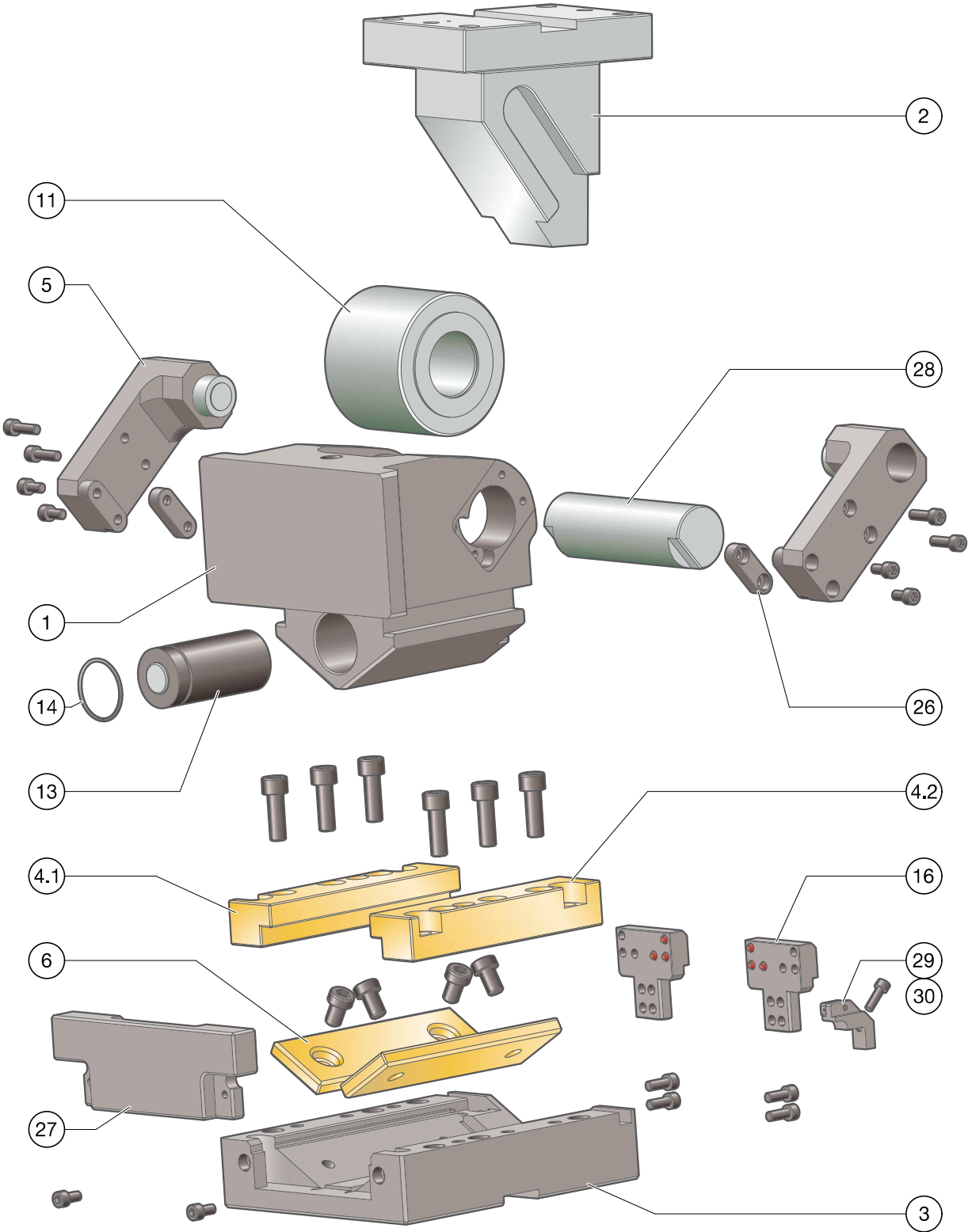
Cam driver:

4 x M12
2 x ø10

Order No	L [mm]	H [mm]	H ₄ [mm]	L ₁ [mm]	L ₂ [mm]	L ₃ [mm]	L ₄ [mm]	D [mm]	β [°]	α [°]	S _w * [mm]	S _p [mm]
2017.43.17.A.0□□.050.0	295,2	248,9	105	151,75	160			216,7	-20	70	45	100,8
2017.43.17.B.0□□.050.0	287,6	254,5	115	151,29	160			226,4	-15	65	45	81,6
2017.43.17.C.0□□.050.0	279,7	234	100	151,49	160			241,8	-10	60	45	68,9
2017.43.17.D.0□□.050.0	265,5	237,5	110	146,44	160			246,3	-5	55	45	60,1
2017.43.17.E.0□□.050.0	258,1	230	110	148,11	160			258,11	0	50	45	53,6
2017.43.17.F.0□□.050.0	257,1	254	125	143,64	160			264	5	45	45	48,8
2017.43.17.G.0□□.050.0	256,1	257,1	120	139,93	160			268,6	10	40	45	45,0
2017.43.17.H.0□□.050.0	254,4	274,1	130	136,46	160	91	200	275,5	15	35	45	42,1
2017.43.17.I.0□□.050.0	246,4	280	130	127,68	160			274,4	20	30	45	39,8
2017.43.17.J.0□□.050.0	251,9	291,8	137	125,02	160			281,2	25	25	45	38,0
2017.43.17.K.0□□.050.0	256,6	283,4	125	120,89	160			277,2	30	20	45	36,7
2017.43.17.L.0□□.050.0	259,3	291,8	131	116,17	160			280,3	35	15	45	35,7
2017.43.17.M.0□□.050.0	260	288	126	109,98	160			275,2	40	10	45	35,0
2017.43.17.N.0□□.050.0	258,8	293	131	102,69	160			275,2	45	5	45	34,6
2017.43.17.P.0□□.050.0	255,6	285,6	125	83	160			259,1	50	0	45	34,5
2017.43.17.A.0□□.080.0	338,8	380	175	192,5	220			231	-20	70	72	161,3
2017.43.17.B.0□□.080.0	330,2	320	165	190,93	220			251,7	-15	65	72	130,5
2017.43.17.C.0□□.080.0	315,6	278,7	140	184,47	220			267,4	-10	60	72	110,3
2017.43.17.D.0□□.080.0	305,5	269,8	140	183,45	220			280,6	-5	55	72	96,2
2017.43.17.E.0□□.080.0	294,5	260	140	184,48	220			294,5	0	50	72	85,8
2017.43.17.F.0□□.080.0	299,1	284,3	155	185,64	220			308,4	5	45	72	78,0
2017.43.17.G.0□□.080.0	292,9	287,6	150	176,72	220			310,1	10	40	72	72,0
2017.43.17.H.0□□.080.0	297,1	304,9	160	179,16	220	118	230	324,5	15	35	72	67,3
2017.43.17.I.0□□.080.0	279,4	311,1	160	160,66	220			315,7	20	30	72	63,7
2017.43.17.J.0□□.080.0	282,9	323,1	167	164,19	220			329,4	25	25	72	60,9
2017.43.17.K.0□□.080.0	280	319,9	160	150,36	220			320,2	30	20	72	58,7
2017.43.17.L.0□□.080.0	281,4	331,5	169	144,3	220			325,1	35	15	72	57,1
2017.43.17.M.0□□.080.0	280,7	311,9	148	131,99	200			306,2	40	10	72	56,0
2017.43.17.N.0□□.080.0	277,9	318	154	130,55	200			311,2	45	5	72	55,4
2017.43.17.P.0□□.080.0	273	302,9	140	97	200			279,6	50	0	72	55,2
2017.43.17.A.0□□.100.0	351,6	380	145	203,42	220			251,6	-20	70	90	201,6
2017.43.17.B.0□□.100.0	343,8	320	140	202,59	220			269,4	-15	65	90	163,1
2017.43.17.C.0□□.100.0	337,8	250	105	204,68	220			293,3	-10	60	90	137,9
2017.43.17.D.0□□.100.0	328,5	241,4	110	204,46	220			304,1	-5	55	90	120,2
2017.43.17.E.0□□.100.0	311,3	240	120	201,26	220			311,26	0	50	90	107,3
2017.43.17.F.0□□.100.0	309,1	274,5	145	195,64	220			317,5	5	45	90	97,5
2017.43.17.G.0□□.100.0	304,8	278	140	188,64	220			320,1	10	40	90	90,0
2017.43.17.H.0□□.100.0	304,2	300,4	155	186,3	220	136	250	330,1	15	35	90	84,2
2017.43.17.I.0□□.100.0	296,7	301,8	150	177,98	220			328,6	20	30	90	79,6
2017.43.17.J.0□□.100.0	293,6	318,9	162	174,91	220			337	25	25	90	76,1
2017.43.17.K.0□□.100.0	295,5	315,9	155	164,1	220			329,6	30	20	90	73,4
2017.43.17.L.0□□.100.0	296,2	329,7	166	155,49	220			332,6	35	15	90	71,4
2017.43.17.M.0□□.100.0	294,5	311,2	146	143,34	200			313,6	40	10	90	70,0
2017.43.17.N.0□□.100.0	290,6	318,5	153	141,97	200			318,6	45	5	90	69,2
2017.43.17.P.0□□.100.0	284,5	304,5	140	108	200			286,7	50	0	90	68,9



ROLLER SLIDE UNITS FRC 2017.43.17. **EXPLODED VIEW**



ROLLER SLIDE UNITS FRC 2017.43.17.

PARTS LIST



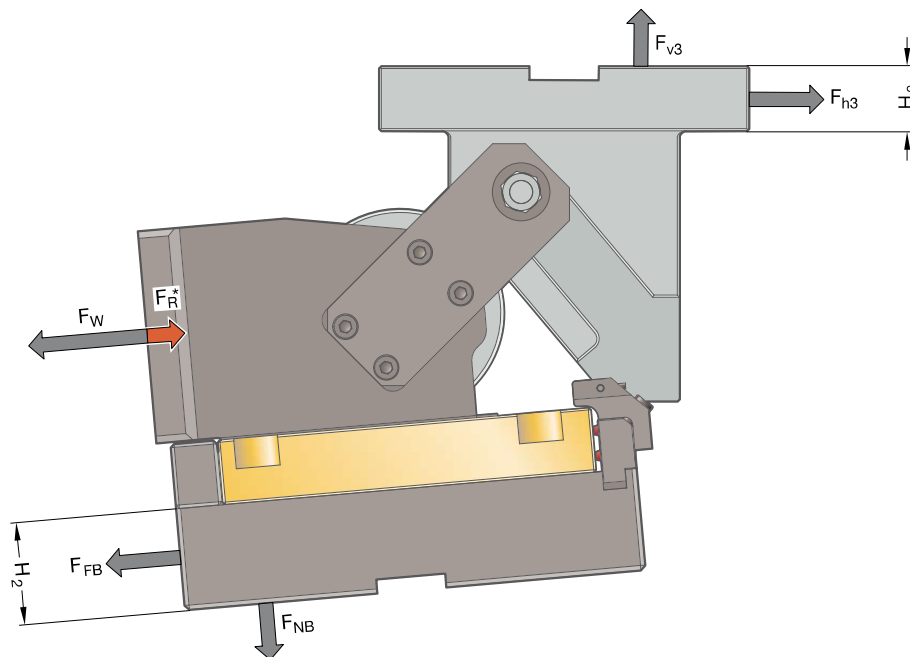
Item No.	Pcs.	Designation	Material	tuned	Spare part
1	1	Cam slider	Ck45	--	--
2	1	Driver	Ck45	--	x
3	1	Cam base	Ck45	--	--
4.1	1	Bracket, left	Bronze with solid lubricant	x	x
4.2	1	Bracket, right	Bronze with solid lubricant	x	x
5	2	Forced retraction	Ck45	--	x
6	2	Sliding plate	Bronze with solid lubricant	--	x
7					
8					
9					
10					
11	1	Drive roller spare parts set	100Cr6	--	x
12					
13	1	Gas spring	2487.12.00500.□□□	--	x
14	1	Circlip		--	x
15					
16	2	Rear cam stop spare parts set	Ck45	--	x
17					
18					
19					
20					
21					
22					
23					
24					
25					
26	2	Feather key	Ck45	--	x
27	1	Front cam stop	Ck45	--	x
28	1	Spindle	16NiCrMo4	--	x
29	1	Sensor mount		--	x
30	1	Sensor		--	x

For inquiries or for spare part orders (x), we require the following data:

- Cam unit order no.
- Cam unit serial number
- Item No. / Designation / Spare part

ROLLER SLIDE UNITS FRC 2017.43.17.

SYSTEM AND SURROUNDING FORCES



Order No	α [°]	F_W [kN]	F_R [kN]	F_{FB} [kN]	F_{NB} [kN]	F_{h3} [kN]	F_{v3} [kN]	H_2 [mm]	H_3 [mm]
2017.43.17.A.□□□.□□□.0	-20	160	7,1	10,0	143,0	75,9	208,5	10	28
2017.43.17.B.□□□.□□□.0	-15	160	7,1	10,0	143,0	93,8	201,1	10	28
2017.43.17.C.□□□.□□□.0	-10	160	7,1	10,0	143,0	110,9	192,2	10	28
2017.43.17.D.□□□.□□□.0	-5	160	7,1	10,0	143,0	127,3	181,8	10	28
2017.43.17.E.□□□.□□□.0	0	160	7,0	10,0	143,0	142,6	170,0	10	28
2017.43.17.F.□□□.□□□.0	5	160	7,0	10,0	143,0	156,9	156,9	10	28
2017.43.17.G.□□□.□□□.0	10	160	7,0	10,0	143,0	170,0	142,6	10	28
2017.43.17.H.□□□.□□□.0	15	160	7,0	10,0	143,0	181,8	127,3	10	28
2017.43.17.I.□□□.□□□.0	20	160	7,0	10,0	143,0	192,2	110,9	10	28
2017.43.17.J.□□□.□□□.0	25	160	7,0	10,0	143,0	201,1	93,8	10	28
2017.43.17.K.□□□.□□□.0	30	160	6,9	10,0	143,0	208,5	75,9	10	28
2017.43.17.L.□□□.□□□.0	35	160	6,9	10,0	143,0	214,3	57,4	10	28
2017.43.17.M.□□□.□□□.0	40	160	6,9	10,0	143,0	218,5	38,5	10	28
2017.43.17.N.□□□.□□□.0	45	160	6,9	10,0	143,0	221,0	19,3	10	28
2017.43.17.P.□□□.□□□.0	50	160	6,9	10,0	143,0	221,9	0,0	10	28

Support via cast shoulder

Width 170 mm

-20° up to 50°		40	40	40
Height 75 mm	30	49	133	49
	32	73	160	73
	30	81	159	81