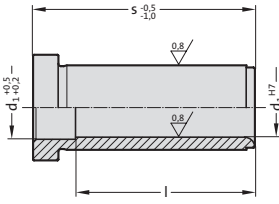
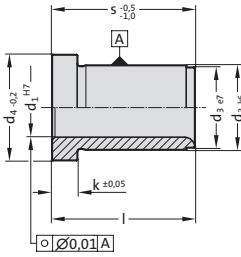


Guide Bush, headed

3120.40.



3120.40. Guide Bush, headed

d ₁	s	l	d ₃	d ₄	k	d ₁	s	l	d ₃	d ₄	k
9 10	9	9	14	16	3	22 24	36	36	30	35	6
9 10	12	12	14	16	3	22 24	46	46	30	35	6
9 10	17	17	14	16	3	22 24	56	56	30	35	6
9 10	22	22	14	16	3	22 24	66	66	30	35	6
9 10	27	27	14	16	3	22 24	76	76	30	35	6
9 10	36	36	14	16	3	22 24	86	86	30	35	6
9 10	46	46	14	16	3	22 24	96	96	30	35	6
9 10	56	46	14	16	3	22 24	116	96	30	35	6
9 10	66	46	14	16	3	22 24	136	96	30	35	6
12	17	17	18	23	6	22 24	156	96	30	35	6
12	22	22	18	23	6	30 32	27	27	42	47	6
12	27	27	18	23	6	30 32	36	36	42	47	6
12	36	36	18	23	6	30 32	46	46	42	47	6
12	46	46	18	23	6	30 32	56	56	42	47	6
12	56	56	18	23	6	30 32	66	66	42	47	6
14 15	12	12	20	25	6	30 32	76	76	42	47	6
14 15	17	17	20	25	6	30 32	86	86	42	47	6
14 15	22	22	20	25	6	30 32	96	96	42	47	6
14 15	27	27	20	25	6	30 32	116	116	42	47	6
14 15	36	36	20	25	6	30 32	136	116	42	47	6
14 15	46	46	20	25	6	30 32	156	116	42	47	6
14 15	56	56	20	25	6	30 32	176	116	42	47	6
14 15	66	56	20	25	6	40 42	46	46	54	60	10
14 15	76	56	20	25	6	40 42	56	56	54	60	10
14 15	86	56	20	25	6	40 42	66	66	54	60	10
14 15	96	56	20	25	6	40 42	76	76	54	60	10
16	17	17	22	27	6	40 42	86	86	54	60	10
16	22	22	22	27	6	40 42	96	96	54	60	10
16	27	27	22	27	6	40 42	116	116	54	60	10
16	36	36	22	27	6	40 42	136	136	54	60	10
16	46	46	22	27	6	40 42	156	136	54	60	10
16	56	56	22	27	6	40 42	196	136	54	60	10
18 20	17	17	26	31	6	40 42	246	136	54	60	10
18 20	22	22	26	31	6	50	76	76	66	72	10
18 20	27	27	26	31	6	50	96	96	66	72	10
18 20	36	36	26	31	6	50	116	116	66	72	10
18 20	46	46	26	31	6	50	136	136	66	72	10
18 20	56	56	26	31	6	50	156	136	66	72	10
18 20	66	66	26	31	6	50	196	136	66	72	10
18 20	76	76	26	31	6	60	76	76	80	86	20
18 20	86	76	26	31	6	60	96	96	80	86	20
18 20	96	76	26	31	6	60	116	116	80	86	20
18 20	116	76	26	31	6	60	136	136	80	86	20
22 24	17	17	30	35	6	60	156	136	80	86	20
22 24	22	22	30	35	6	60	196	136	80	86	20
22 24	27	27	30	35	6	60	246	136	80	86	20

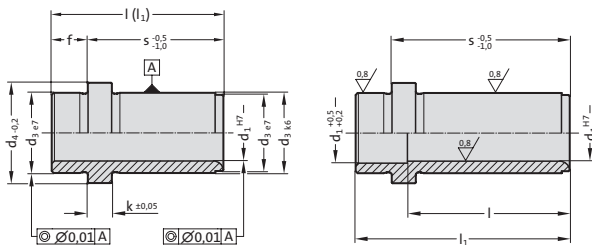
Ordering Code (example):

Guide Bush, headed	=	3120.40.
Guide diameter d ₁	9 mm =	009.
Length s	9 mm =	009
Order No	=	3120.40. 009. 009

Locating guide bush, headed



3120.42.



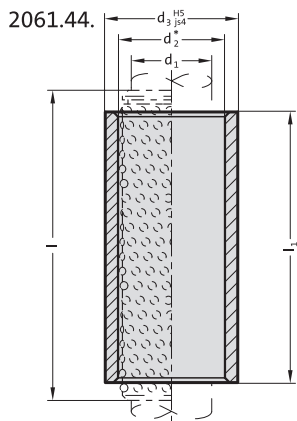
3120.42. Locating guide bush, headed

d_1	s	l	l_1	d_3	d_4	f	k	d_1	s	l	l_1	d_3	d_4	f	k
9 10	12	15	15	14	16	3	3	22 24	36	45	45	30	35	9	6
9 10	17	20	20	14	16	3	3	22 24	46	55	55	30	35	9	6
9 10	22	25	25	14	16	3	3	22 24	56	65	65	30	35	9	6
9 10	27	30	30	14	16	3	3	22 24	66	75	75	30	35	9	6
9 10	36	39	39	14	16	3	3	22 24	76	85	85	30	35	9	6
9 10	46	46	49	14	16	3	3	22 24	86	95	95	30	35	9	6
9 10	56	46	59	14	16	3	3	22 24	96	105	105	30	35	9	6
9 10	66	46	69	14	16	3	3	22 24	116	96	125	30	35	9	6
14 15	17	26	26	20	25	9	6	22 24	136	96	145	30	35	9	6
14 15	22	31	31	20	25	9	6	22 24	156	96	165	30	35	9	6
14 15	27	36	36	20	25	9	6	30 32	27	36	36	42	47	9	6
14 15	36	45	45	20	25	9	6	30 32	36	45	45	42	47	9	6
14 15	46	55	55	20	25	9	6	30 32	46	55	55	42	47	9	6
14 15	56	56	65	20	25	9	6	30 32	56	65	65	42	47	9	6
14 15	66	56	75	20	25	9	6	30 32	66	75	75	42	47	9	6
14 15	76	56	85	20	25	9	6	30 32	76	85	85	42	47	9	6
14 15	86	56	95	20	25	9	6	30 32	86	95	95	42	47	9	6
14 15	96	56	105	20	25	9	6	30 32	96	105	105	42	47	9	6
14 15	116	56	125	20	25	9	6	30 32	116	125	125	42	47	9	6
18 20	17	26	26	26	31	9	6	30 32	136	116	145	42	47	9	6
18 20	22	31	31	26	31	9	6	30 32	156	116	165	42	47	9	6
18 20	27	36	36	26	31	9	6	30 32	176	116	185	42	47	9	6
18 20	36	45	45	26	31	9	6	30 32	196	116	205	42	47	9	6
18 20	46	55	55	26	31	9	6	40 42	46	58	58	54	60	12	10
18 20	56	65	65	26	31	9	6	40 42	56	68	68	54	60	12	10
18 20	66	75	75	26	31	9	6	40 42	66	78	78	54	60	12	10
18 20	76	76	85	26	31	9	6	40 42	76	88	88	54	60	12	10
18 20	86	76	95	26	31	9	6	40 42	86	98	98	54	60	12	10
18 20	96	76	105	26	31	9	6	40 42	96	108	108	54	60	12	10
18 20	116	76	125	26	31	9	6	40 42	116	128	128	54	60	12	10
18 20	136	76	145	26	31	9	6	40 42	136	136	148	54	60	12	10
22 24	17	26	26	30	35	9	6	40 42	156	136	168	54	60	12	10
22 24	22	31	31	30	35	9	6	40 42	196	136	208	54	60	12	10
22 24	27	36	36	30	35	9	6	40 42	246	136	258	54	60	12	10

Ordering Code (example):

Locating guide bush, headed	= 3120.42.
Guide diameter d_1	9 mm = 009.
Length with collar s	12 mm = 012
Order No	= 3120.42. 009. 012

Guide bush for ball bearing, ISO 9448-3



Material:

Tool steel, hardened 62 ± 2 HRC

Execution:

Bearing surfaces honed,
outside diameter precision ground.

Slip-Fit Bonding:

The position of the bearing is given by push fit holes tolerance H5. The adhesive (order no. 281.648) provides optimum push retention whilst offering the following :

- high accuracy and stiffness
- no problems to find position when changing bushings

We do not recommend to press fit for the same reasons mentioned above.

2061.44. Guide bush for ball bearing, ISO 9448-3

d_1	8	10	11	12	15	16	19	20	24	25	30	32	38	40	48	50	60	63	80
d_2	11	14	15	16	21	22	25	26	30	31	38	40	46	48	56	58	68	71	92
d_3	18	22	22	22	28	28	32	32	40	40	48	48	58	58	70	70	85	85	105
l_1 / l^*																			
30 / 40	•	•	•	•															
23 / 40		•	•	•															
37 / 40		•	•	•															
23 / 45					•	•	•	•	•	•									
30 / 45					•	•	•	•	•	•									
37 / 45					•	•	•	•	•	•									
47 / 56					•	•	•	•	•	•									
60 / 71					•	•	•	•	•	•									
77 / 95							•	•	•	•									
37 / 50																			
95 / 120																			
47 / 63																			
60 / 80																			
120 / 140																			
60 / 95																			

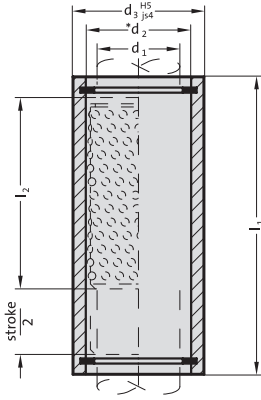
* l_1 = Nominal ordering length of ball cage - preferred length

Ordering Code (example):

Guide bush for ball bearing, ISO 9448-3		=2061.44.
Guide diameter d_1	8 mm	= 008.
Installation length l_1	30 mm	= 030.
Order No		=2061.44. 008. 030

Guide bush for ball bearing, with stroke limitation

2061.47.



Material:

Tool steel, hardened 62 ± 2 HRC

Execution:

Bearing surfaces honed,
outside diameter precision ground.

Slip-Fit Bonding:

The position of the bearing is given by push fit tolerance H5. The adhesive (order no. 281.648) provides optimum push retention whilst offering the following :

- high accuracy and stiffness
- no problems to find position when changing bushings

We do not recommend to press fit for the same reasons mentioned above.

2061.47. Guide bush for ball bearing, with stroke limitation

d_1	15 16	19 20	24 25	30 32	38 40	48 50	60 63
d_2	21 22	25 26	30 31	38 40	46 48	56 58	68 71
d_3	28	32	40	48	58	70	85
l_1 / l_2^*							
60 / 44	●						
77 / 44		●					
95 / 50			●				
120 / 65				●			
120 / 80					●		
120 / 95						●	
							●

* l_2 = Manufacturing length of ball cage

Ordering Code (example):

Guide bush for ball bearing, with stroke limitation		=2061.47.
Guide diameter d_1	15 mm =	015.
Installation length l_1	60 mm =	060.
Order No		=2061.47. 015.060