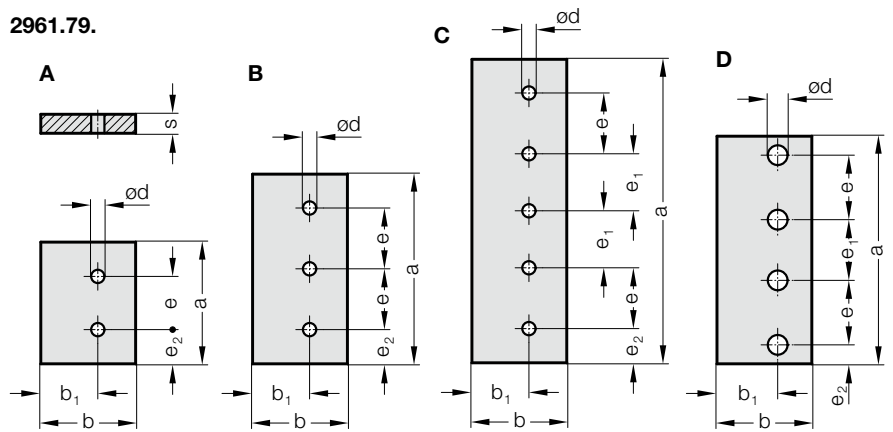


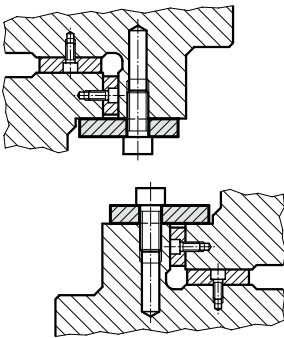
RETAINING PLATE, STEEL, VDI 3357



2961.79.



Mounting example



Material:

Steel, surface hardened

Note:

Screws are not included.

Fixing:

Use socket cap screws DIN EN ISO 4762.

2961.79. Retaining plate, Steel, VDI 3357

Order No	Shape	b	s	a	b ₁	d	e	e ₁	e ₂	Number of screw holes
2961.79.035.10.160	A	35	10	160	20	11	70	-	45	2
2961.79.035.10.200	A	35	10	200	20	11	110	-	45	2
2961.79.035.10.250	B	35	10	250	20	11	80	-	45	3
2961.79.045.15.160	A	45	15	160	30	13.5	70	-	45	2
2961.79.045.15.200	A	45	15	200	30	13.5	110	-	45	2
2961.79.045.15.250	B	45	15	250	30	13.5	80	-	45	3
2961.79.055.15.160	A	55	15	160	35	17.5	70	-	45	2
2961.79.055.15.200	A	55	15	200	35	17.5	110	-	45	2
2961.79.055.15.250	B	55	15	250	35	17.5	80	-	45	3
2961.79.075.25.160	A	75	25	160	40	17.5	70	-	45	2
2961.79.075.25.200	A	75	25	200	40	17.5	110	-	45	2
2961.79.075.25.250	B	75	25	250	40	17.5	80	-	45	3
2961.79.085.28.240	B	85	28	240	60	22	95	-	25	3
2961.79.085.28.300	D	85	28	300	60	22	85	80	25	4
2961.79.085.28.350	D	85	28	350	60	22	100	100	25	4
2961.79.085.28.400	D	85	28	400	60	22	115	120	25	4
2961.79.085.28.450	C	85	28	450	60	22	100	100	25	5
2961.79.085.30.160	A	85	30	160	60	22	70	-	45	2
2961.79.085.30.200	A	85	30	200	60	22	110	-	45	2
2961.79.085.30.250	B	85	30	250	60	22	80	-	45	3
2961.79.085.30.300	B	85	30	300	60	22	105	-	45	3
2961.79.085.30.350	B	85	30	350	60	22	130	-	45	3
2961.79.085.30.400	C	85	30	400	60	22	80	75	45	5
2961.79.100.25.160	A	100	25	160	60	17.5	70	-	45	2
2961.79.100.25.200	A	100	25	200	60	17.5	110	-	45	2
2961.79.100.25.250	B	100	25	250	60	17.5	80	-	45	3
2961.79.100.25.400	C	100	25	400	60	17.5	80	75	45	5
2961.79.100.30.160	A	100	30	160	60	22	70	-	45	2
2961.79.100.30.200	A	100	30	200	60	22	110	-	45	2
2961.79.100.30.250	B	100	30	250	60	22	80	-	45	3
2961.79.100.30.400	C	100	30	400	60	22	80	75	45	5
2961.79.125.25.160	A	125	25	160	75	17.5	70	-	45	2
2961.79.125.25.200	A	125	25	200	75	17.5	110	-	45	2
2961.79.125.25.250	B	125	25	250	75	17.5	80	-	45	3
2961.79.125.25.400	C	125	25	400	75	17.5	80	75	45	5
2961.79.125.25.300	D	125	25	300	80	26	85	80	25	4
2961.79.125.25.350	D	125	25	350	80	26	100	100	25	4
2961.79.125.25.400.1	D	125	25	400	80	26	115	120	25	4
2961.79.125.25.450	C	125	25	450	80	26	100	100	25	5
2961.79.125.25.500	C	125	25	500	80	26	110	115	25	5
2961.79.125.30.160	A	125	30	160	75	22	70	-	45	2
2961.79.125.30.200	A	125	30	200	75	22	110	-	45	2
2961.79.125.30.250	B	125	30	250	75	22	80	-	45	3
2961.79.125.30.300	B	125	30	300	75	22	105	-	45	3
2961.79.125.30.350	B	125	30	350	75	22	130	-	45	3
2961.79.125.30.400	C	125	30	400	75	22	80	75	45	5
2961.79.125.30.450	C	125	30	450	75	22	80	95	50	5
2961.79.125.30.500	C	125	30	500	75	22	80	120	50	5

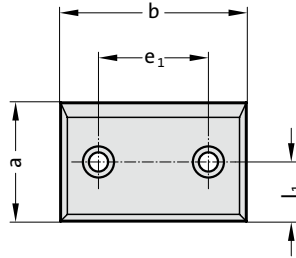
SLIDING PAD, STEEL, VDI 3357



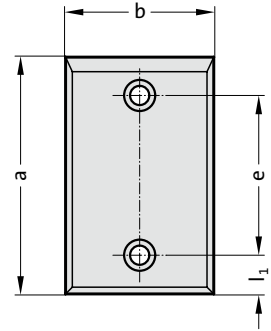
2960.87.



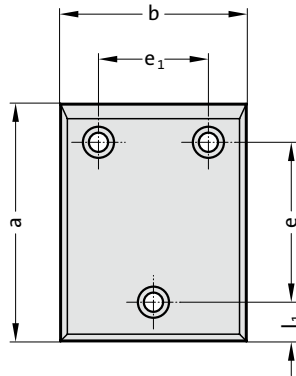
D



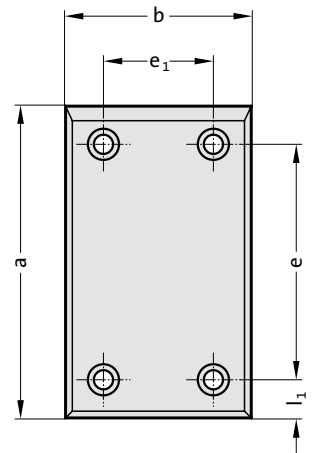
B



G



H



Material:

Steel, surface hardened

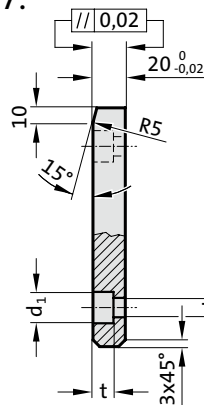
Note:

Screws are not included.

Fixing:

Use socket cap screws DIN EN ISO 4762.

2960.87.



SLIDING PAD, STEEL, VDI 3357

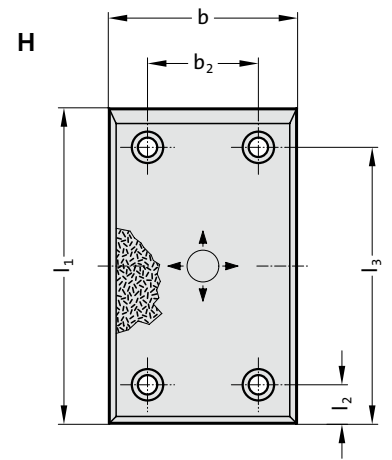
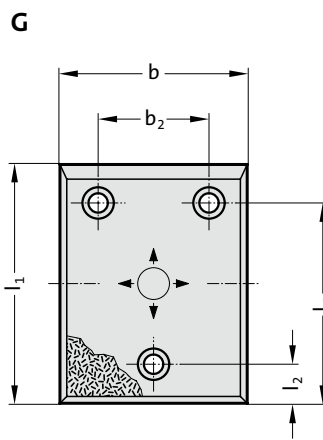
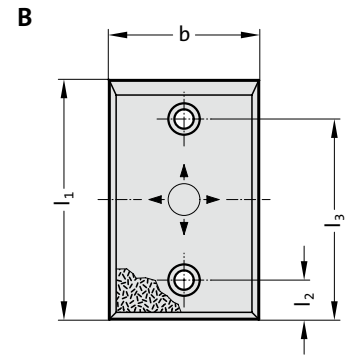
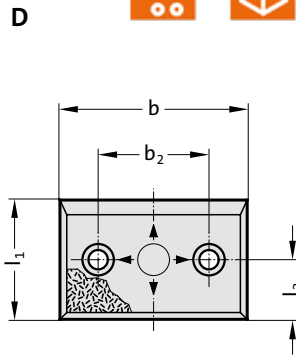
2960.87. Sliding pad, Steel, VDI 3357

Order No	Shape	b	a	l ₁	e	e ₁	d	d ₁	t	Number of screw holes
2960.87.050.080	B	50	80	25	30	-	9	15	9	2
2960.87.050.100	B	50	100	25	50	-	13.5	20	13	2
2960.87.050.125	B	50	125	25	75	-	13.5	20	13	2
2960.87.050.160	B	50	160	25	110	-	13.5	20	13	2
2960.87.050.200	B	50	200	25	150	-	13.5	20	13	2
2960.87.080.050	D	80	50	25	-	30	9	15	9	2
2960.87.080.080	B	80	80	25	30	-	13.5	20	13	2
2960.87.080.100	B	80	100	25	50	-	13.5	20	13	2
2960.87.080.125	B	80	125	25	75	-	13.5	20	13	2
2960.87.080.160	B	80	160	25	110	-	13.5	20	13	2
2960.87.080.200	B	80	200	25	150	-	13.5	20	13	2
2960.87.080.250	B	80	250	40	170	-	13.5	20	13	2
2960.87.080.315	B	80	315	40	235	-	13.5	20	13	2
2960.87.100.050	D	100	50	25	-	50	13.5	20	13	2
2960.87.100.080	D	100	80	40	-	50	13.5	20	13	2
2960.87.100.100	B	100	100	25	50	-	13.5	20	13	2
2960.87.100.125	B	100	125	25	75	-	13.5	20	13	2
2960.87.100.160	B	100	160	25	110	-	13.5	20	13	2
2960.87.100.200	B	100	200	25	150	-	13.5	20	13	2
2960.87.100.250	B	100	250	40	170	-	13.5	20	13	2
2960.87.100.315	B	100	315	40	235	-	13.5	20	13	2
2960.87.125.050	D	125	50	25	-	75	13.5	20	13	2
2960.87.125.080	D	125	80	40	-	75	13.5	20	13	2
2960.87.125.100	G	125	100	25	50	75	13.5	20	13	3
2960.87.125.125	G	125	125	25	75	75	13.5	20	13	3
2960.87.125.160	G	125	160	25	110	75	13.5	20	13	3
2960.87.125.200	G	125	200	25	150	75	13.5	20	13	3
2960.87.125.250	G	125	250	40	170	75	13.5	20	13	3
2960.87.125.315	G	125	315	40	235	75	13.5	20	13	3
2960.87.160.050	D	160	50	25	-	110	13.5	20	13	2
2960.87.160.080	D	160	80	40	-	110	13.5	20	13	2
2960.87.160.100	G	160	100	25	50	110	13.5	20	13	3
2960.87.160.125	G	160	125	25	75	110	13.5	20	13	3
2960.87.160.160	G	160	160	25	110	110	13.5	20	13	3
2960.87.160.200	G	160	200	25	150	110	13.5	20	13	3
2960.87.160.250	H	160	250	40	170	110	13.5	20	13	4
2960.87.160.315	H	160	315	40	235	110	13.5	20	13	4

SLIDING PAD, STEEL WITH SINTERLAYER, VDI 3357



2960.30.



Description:

Steel with sinterlayer is a two-layer material. It ensures low maintenance, selflubricating service even in arduous multishift applications.

Material:

Steel plate with sinterlayer, part of lubricant 20-25%.

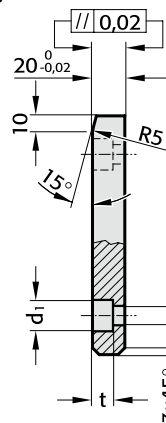
Note:

Screws are not included.

Fixing:

Use socket cap screws DIN EN ISO 4762.

2960.30.



SLIDING PAD, STEEL WITH SINTERLAYER, VDI 3357

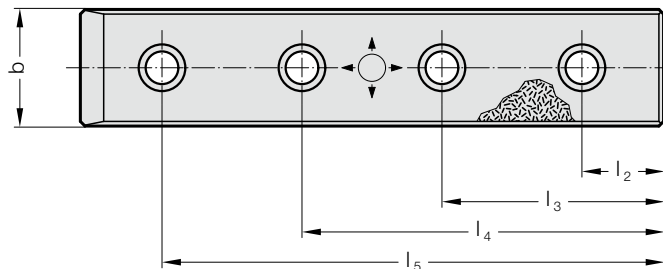
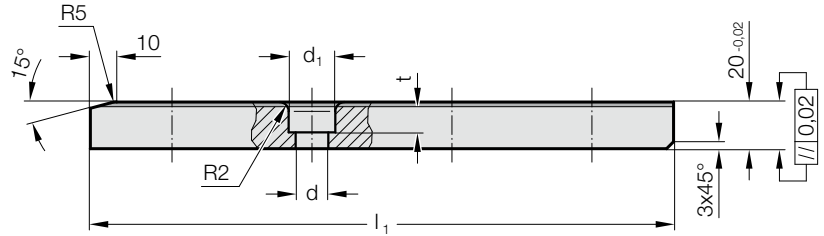
2960.30. Sliding pad, Steel with sinterlayer, VDI 3357

Order No	Shape	b	l ₁	l ₂	l ₃	b ₂	d	d ₁	t	Number of screw holes
2960.30.050.080	B	50	80	25	55	-	9	15	9	2
2960.30.050.100	B	50	100	25	75	-	13.5	20	13	2
2960.30.050.125	B	50	125	25	100	-	13.5	20	13	2
2960.30.050.160	B	50	160	25	125	-	13.5	20	13	2
2960.30.050.200	B	50	200	25	175	-	13.5	20	13	2
2960.30.080.050	D	80	50	25	-	30	9	15	9	2
2960.30.080.080	B	80	80	25	55	-	13.5	20	13	2
2960.30.080.100	B	80	100	25	75	-	13.5	20	13	2
2960.30.080.125	B	80	125	25	100	-	13.5	20	13	2
2960.30.080.160	B	80	160	25	135	-	13.5	20	13	2
2960.30.080.200	B	80	200	25	175	-	13.5	20	13	2
2960.30.080.250	B	80	250	40	210	-	13.5	20	13	2
2960.30.080.315	B	80	315	40	275	-	13.5	20	13	2
2960.30.100.050	D	100	50	25	-	50	13.5	20	13	2
2960.30.100.080	D	100	80	40	-	50	13.5	20	13	2
2960.30.100.100	B	100	100	25	75	-	13.5	20	13	2
2960.30.100.125	B	100	125	25	100	-	13.5	20	13	2
2960.30.100.160	B	100	160	25	135	-	13.5	20	13	2
2960.30.100.200	B	100	200	25	175	-	13.5	20	13	2
2960.30.100.250	B	100	250	40	210	-	13.5	20	13	2
2960.30.100.315	B	100	315	40	275	-	13.5	20	13	2
2960.30.125.050	D	125	50	25	-	75	13.5	20	13	2
2960.30.125.080	D	125	80	40	-	75	13.5	20	13	2
2960.30.125.100	G	125	100	25	75	75	13.5	20	13	3
2960.30.125.125	G	125	125	25	100	75	13.5	20	13	3
2960.30.125.160	G	125	160	25	135	75	13.5	20	13	3
2960.30.125.200	G	125	200	25	175	75	13.5	20	13	3
2960.30.125.250	G	125	250	40	210	75	13.5	20	13	3
2960.30.125.315	G	125	315	40	275	75	13.5	20	13	3
2960.30.160.050	D	160	50	25	-	110	13.5	20	13	2
2960.30.160.080	D	160	80	40	-	110	13.5	20	13	2
2960.30.160.100	G	160	100	25	75	110	13.5	20	13	3
2960.30.160.125	G	160	125	25	100	110	13.5	20	13	3
2960.30.160.160	G	160	160	25	135	110	13.5	20	13	3
2960.30.160.200	G	160	200	25	175	110	13.5	20	13	3
2960.30.160.250	H	160	250	40	210	110	13.5	20	13	4
2960.30.160.315	H	160	315	40	275	110	13.5	20	13	4

SLIDING PAD, STEEL WITH SINTERLAYER, VDI 3357



2960.31.



Description:

Steel with sinterlayer is a two-layer material. It ensures low maintenance, selflubricating service even in arduous multishift applications.

Material:

Steel plate with sinterlayer, part of lubricant 20-25%.

Note:

Screws are not included.

Fixing:

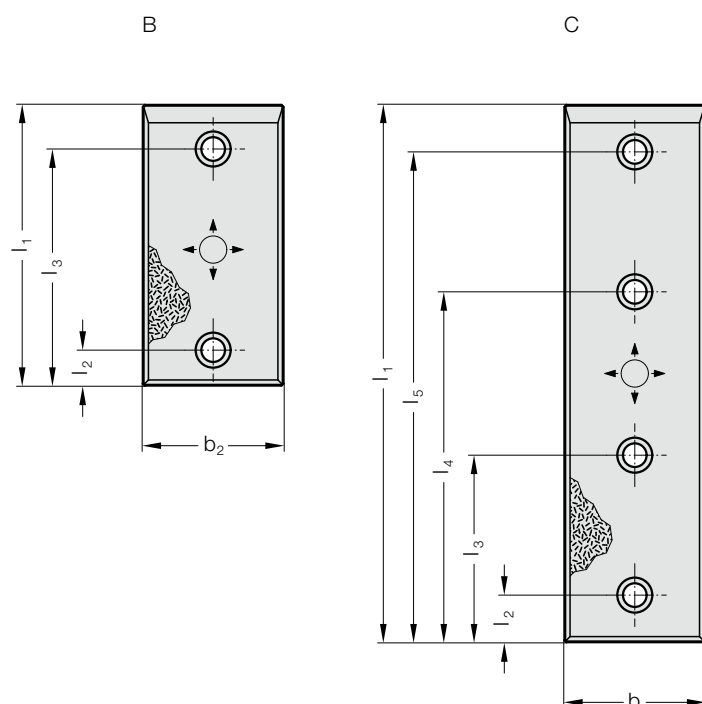
Use socket cap screws DIN EN ISO 4762 M12.

2960.31. Sliding pad, Steel with sinterlayer, VDI 3357

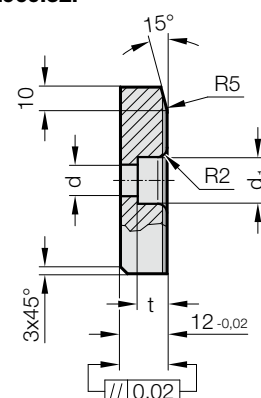
Order No	b	l ₁	l ₂	l ₃	l ₄	l ₅	d	d ₁	t	Number of screw holes
2960.31.050.250	50	250	25	85	165	225	13.5	20	13	4
2960.31.050.300	50	300	25	105	195	275	13.5	20	13	4
2960.31.050.350	50	350	25	125	225	325	13.5	20	13	4
2960.31.050.400	50	400	25	145	255	375	13.5	20	13	4
2960.31.050.450	50	450	25	165	285	425	13.5	20	13	4
2960.31.050.500	50	500	25	175	325	475	13.5	20	13	4
2960.31.080.250	80	250	25	85	165	225	13.5	20	13	4
2960.31.080.300	80	300	25	105	195	275	13.5	20	13	4
2960.31.080.350	80	350	25	125	225	325	13.5	20	13	4
2960.31.080.400	80	400	25	145	255	375	13.5	20	13	4
2960.31.080.450	80	450	25	165	285	425	13.5	20	13	4
2960.31.080.500	80	500	25	175	325	475	13.5	20	13	4
2960.31.100.250	100	250	25	85	165	225	13.5	20	13	4
2960.31.100.300	100	300	25	105	195	275	13.5	20	13	4
2960.31.100.350	100	350	25	125	225	325	13.5	20	13	4
2960.31.100.400	100	400	25	145	255	375	13.5	20	13	4
2960.31.100.450	100	450	25	165	285	425	13.5	20	13	4
2960.31.100.500	100	500	25	175	325	475	13.5	20	13	4
2960.31.125.250	125	250	25	85	165	225	13.5	20	13	4
2960.31.125.300	125	300	25	105	195	275	13.5	20	13	4
2960.31.125.350	125	350	25	125	225	325	13.5	20	13	4
2960.31.125.400	125	400	25	145	255	375	13.5	20	13	4
2960.31.125.450	125	450	25	165	285	425	13.5	20	13	4
2960.31.125.500	125	500	25	175	325	475	13.5	20	13	4
2960.31.160.250	160	250	25	85	165	225	13.5	20	13	4
2960.31.160.300	160	300	25	105	195	275	13.5	20	13	4
2960.31.160.350	160	350	25	125	225	325	13.5	20	13	4
2960.31.160.400	160	400	25	145	255	375	13.5	20	13	4
2960.31.160.450	160	450	25	165	285	425	13.5	20	13	4
2960.31.160.500	160	500	25	175	325	475	13.5	20	13	4

SLIDING PAD, STEEL WITH SINTERLAYER, VDI 3357

2960.32.



2960.32.



2960.32. Sliding pad, Steel with sinterlayer, VDI 3357

Order No	Shape	b	l ₁	l ₂	l ₃	l ₄	l ₅	d	d ₁	t	Number of screw holes
2960.32.030.080	B	30	80	25	55	-	-	9	15	9	2
2960.32.030.100	B	30	100	25	75	-	-	9	15	9	2
2960.32.030.125	B	30	125	25	100	-	-	9	15	9	2
2960.32.030.160	B	30	160	25	135	-	-	9	15	9	2
2960.32.030.200	B	30	200	25	175	-	-	9	15	9	2
2960.32.040.080	B	40	80	25	55	-	-	9	15	9	2
2960.32.040.100	B	40	100	25	75	-	-	9	15	9	2
2960.32.040.125	B	40	125	25	100	-	-	9	15	9	2
2960.32.040.160	B	40	160	25	135	-	-	9	15	9	2
2960.32.040.200	B	40	200	25	175	-	-	9	15	9	2
2960.32.050.080	B	50	80	25	55	-	-	9	15	9	2
2960.32.050.100	B	50	100	25	75	-	-	9	15	9	2
2960.32.050.125	B	50	125	25	100	-	-	9	15	9	2
2960.32.050.160	B	50	160	25	135	-	-	9	15	9	2
2960.32.050.200	B	50	200	25	175	-	-	9	15	9	2
2960.32.050.250	C	50	250	25	85	165	225	9	15	9	4
2960.32.050.300	C	50	300	25	105	195	275	9	15	9	4
2960.32.050.350	C	50	350	25	125	225	325	9	15	9	4
2960.32.050.400	C	50	400	25	145	255	375	9	15	9	4
2960.32.060.080	B	60	80	25	55	-	-	9	15	9	2
2960.32.060.100	B	60	100	25	75	-	-	9	15	9	2
2960.32.060.125	B	60	125	25	100	-	-	9	15	9	2
2960.32.060.160	B	60	160	25	135	-	-	9	15	9	2
2960.32.060.200	B	60	200	25	175	-	-	9	15	9	2
2960.32.080.080	B	80	80	25	55	-	-	9	15	9	2
2960.32.080.100	B	80	100	25	75	-	-	9	15	9	2
2960.32.080.125	B	80	125	25	100	-	-	9	15	9	2
2960.32.080.160	B	80	160	25	135	-	-	9	15	9	2
2960.32.080.200	B	80	200	25	175	-	-	9	15	9	2

Description:

Steel with sinterlayer is a two-layer material. It ensures low maintenance, selflubricating service even in arduous multishift applications.

Material:

Steel plate with sinterlayer, part of lubricant 20-25%.

Note:

Screws are not included.

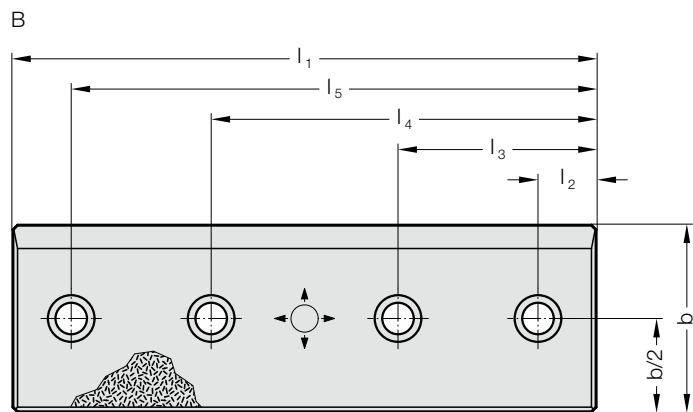
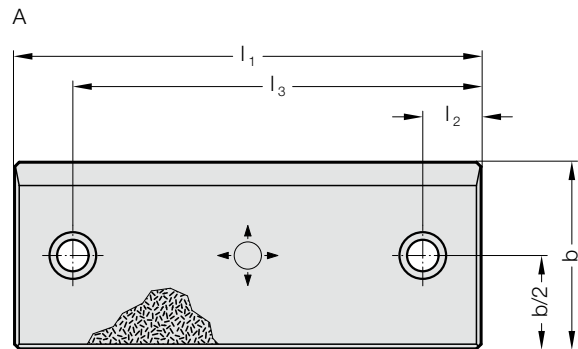
Fixing:

Use socket cap screws DIN EN ISO 4762 M8.

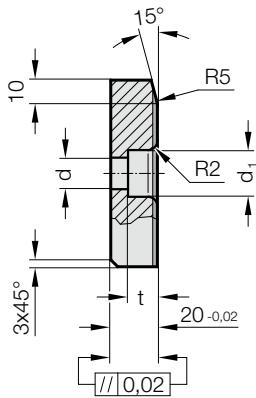
SLIDING PAD, STEEL WITH SINTERLAYER, VDI 3357



2960.33.



2960.33.



Description:

Steel with sinterlayer is a two-layer material. It ensures low maintenance, selflubricating service even in arduous multishift applications.

Material:

Steel plate with sinterlayer, part of lubricant 20-25%.

Note:

Screws are not included.

Fixing:

Use socket cap screws DIN EN ISO 4762 M12.

2960.33. Sliding pad, Steel with sinterlayer, VDI 3357

Order No	Shape	b	l ₁	l ₂	l ₃	l ₄	l ₅	d	d ₁	t	Number of screw holes
2960.33.080.200	A	80	200	25	175	-	-	13.5	20	13	2
2960.33.080.250	B	80	250	25	85	165	225	13.5	20	13	4
2960.33.080.300	B	80	300	25	105	195	275	13.5	20	13	4
2960.33.080.350	B	80	350	25	125	225	325	13.5	20	13	4
2960.33.080.400	B	80	400	25	145	255	375	13.5	20	13	4
2960.33.080.450	B	80	450	25	165	285	425	13.5	20	13	4
2960.33.080.500	B	80	500	25	175	325	475	13.5	20	13	4

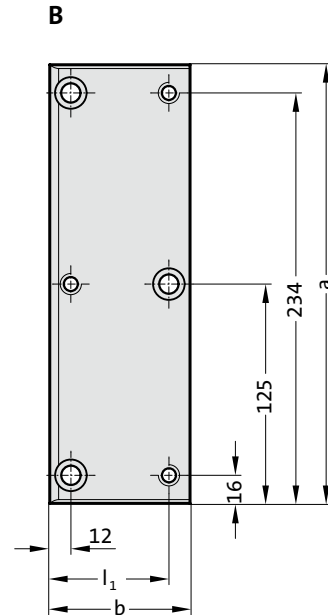
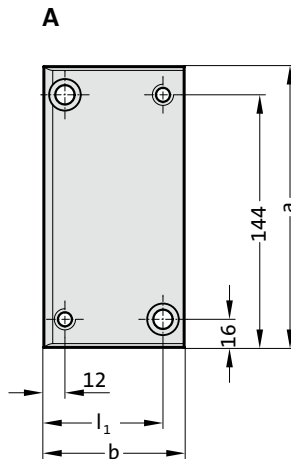
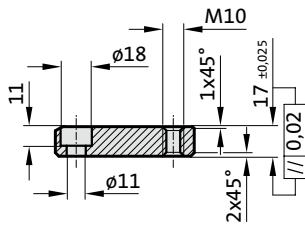
SLIDING PAD, STEEL, CNOMO



2962.84.45.



2962.84.45.



Material:

Steel, surface hardened

Note:

Screws are not included.

Fixing:

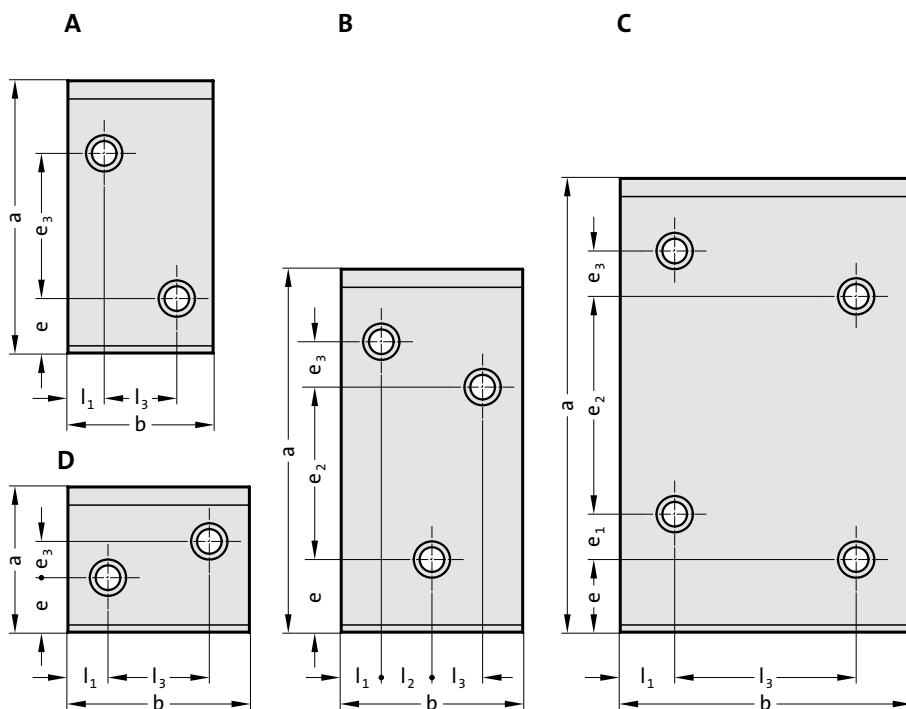
Use socket cap screws
DIN EN ISO 4762 M10.

2962.84.45. Sliding pad, Steel, CNOMO

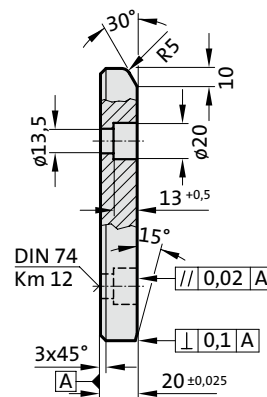
Order No	Shape	b	a	l ₁	Number of screw counterbores	Number of threads
2962.84.45.050.17.160	A	50	160	38	2	2
2962.84.45.050.17.250	B	50	250	38	3	3
2962.84.45.080.17.160	A	80	160	68	2	2
2962.84.45.080.17.250	B	80	250	68	3	3

SLIDING PAD, STEEL, NAAMS

2960.80.



2960.80.



2960.80. Sliding pad, Steel, NAAMS

Order No	Shape	b	a	l ₁	l ₂	l ₃	e	e ₁	e ₂	e ₃	Number of screw holes
2960.80.050.100	A	50	100	25	-	-	30	-	-	30	2
2960.80.050.150	A	50	150	25	-	-	30	-	-	80	2
2960.80.050.200	A	50	200	25	-	-	40	-	-	120	2
2960.80.080.100	A	80	100	20	-	40	30	-	-	30	2
2960.80.080.150	A	80	150	20	-	40	30	-	-	80	2
2960.80.080.200	A	80	200	20	-	40	40	-	-	120	2
2960.80.080.250	A	80	250	20	-	40	40	-	-	170	2
2960.80.080.315	B	80	315	20	20	20	40	-	210	25	3
2960.80.100.050	D	100	50	22	-	56	14	-	-	13	2
2960.80.100.080	D	100	80	22	-	56	30	-	-	20	2
2960.80.100.100	A	100	100	22	-	56	30	-	-	30	2
2960.80.100.150	A	100	150	22	-	56	30	-	-	80	2
2960.80.100.200	B	100	200	22	28	28	40	-	95	25	3
2960.80.100.250	B	100	250	22	28	28	40	-	145	25	3
2960.80.100.315	B	100	315	22	28	28	40	-	210	25	3
2960.80.125.080	D	125	80	25	-	75	30	-	-	20	2
2960.80.125.100	A	125	100	25	-	75	30	-	-	30	2
2960.80.125.150	A	125	150	25	-	75	30	-	-	80	2
2960.80.125.200	B	125	200	25	37	38	40	-	95	25	3
2960.80.125.250	B	125	250	25	37	38	40	-	145	25	3
2960.80.125.315	C	125	315	25	-	75	40	25	165	25	4
2960.80.160.100	A	160	100	30	-	100	30	-	-	30	2
2960.80.160.150	A	160	150	30	-	100	30	-	-	80	2
2960.80.160.200	B	160	200	30	50	50	40	-	95	25	3
2960.80.160.250	C	160	250	30	-	100	40	25	120	25	4
2960.80.160.315	C	160	315	30	-	100	40	25	185	25	4

Material:

Steel, surface hardened

Note:

Screws are not included.

Fixing:

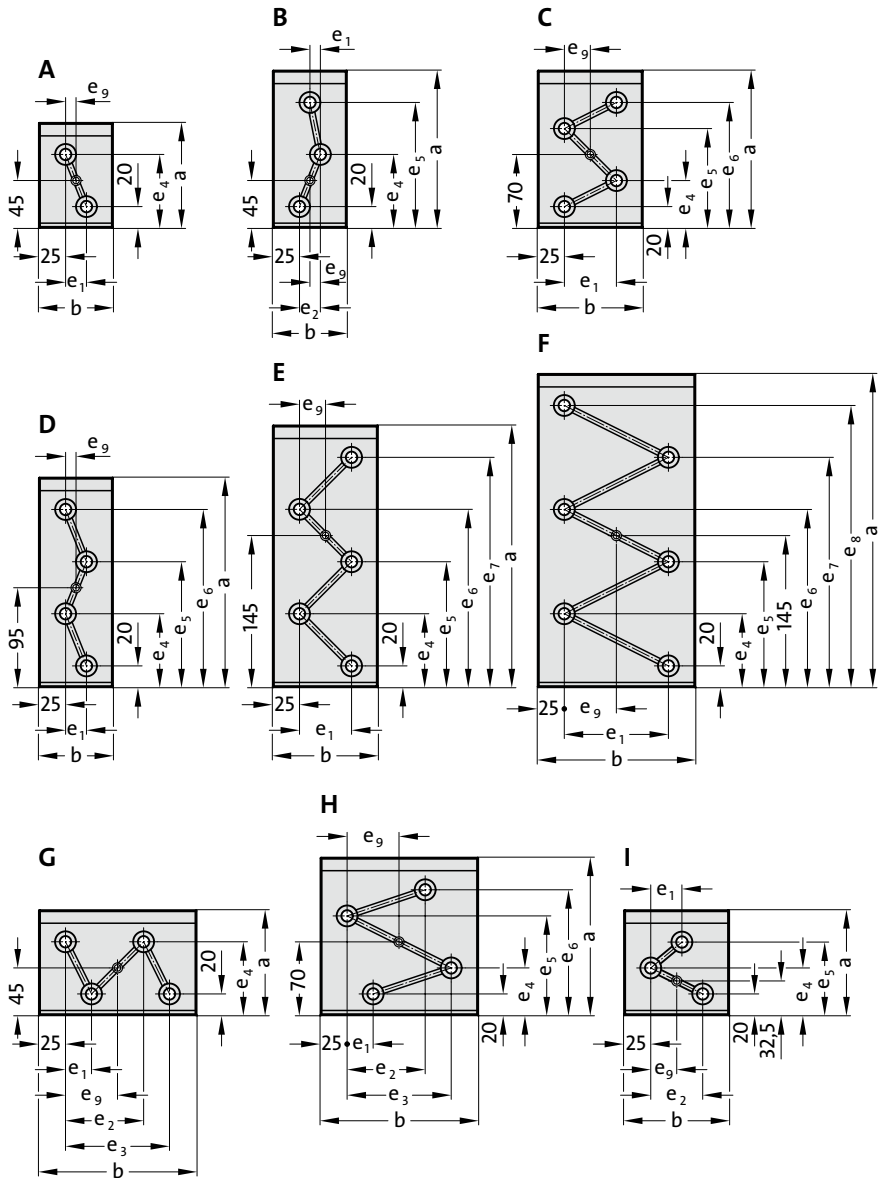
Use socket cap screws

DIN EN ISO 4762 M12.

SLIDING PAD, STEEL WITH OIL GROOVE, CNOMO



2960.44.45.



Material:

Steel, surface hardened

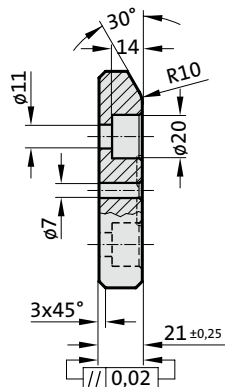
Note:

Screws are not included.

Fixing:

Use socket cap screws DIN EN ISO 4762 M10.

2960.44.45.



SLIDING PAD, STEEL WITH OIL GROOVE, CNOMO

2960.44.45. Sliding pad, Steel with oil groove, CNOMO

Order No	Shape	b	a	e	e ₁	e ₂	e ₃	e ₄	e ₅	e ₆	e ₇	e ₈	e ₉	Number of screw holes
2960.44.45.070.100	A	70	100	20	-	-	-	70	-	-	-	-	10	2
2960.44.45.070.150	B	70	150	10	20	-	-	70	120	-	-	-	10	3
2960.44.45.070.200	D	70	200	20	-	-	-	70	120	170	-	-	10	4
2960.44.45.100.100	I	100	100	30	50	-	-	45	70	-	-	-	25	3
2960.44.45.100.150	C	100	150	50	-	-	-	45	95	120	-	-	25	4
2960.44.45.100.200	D	100	200	50	-	-	-	70	120	170	-	-	25	4
2960.44.45.100.250	E	100	250	50	-	-	-	70	120	170	220	-	25	5
2960.44.45.100.300	F	100	300	50	-	-	-	70	120	170	220	270	25	6
2960.44.45.150.100	G	150	100	25	75	100	-	70	-	-	-	-	50	4
2960.44.45.150.150	H	150	150	25	75	100	45	95	120	-	-	-	50	4
2960.44.45.150.200	D	150	200	100	-	-	-	70	120	170	-	-	50	4
2960.44.45.150.250	E	150	250	100	-	-	-	70	120	170	220	-	50	5
2960.44.45.150.300	F	150	300	100	-	-	-	70	120	170	220	270	50	6
2960.44.45.200.100	G	200	100	50	100	150	-	70	-	-	-	-	75	4

SLIDING PAD, STEEL, VDI 3357



2960.88.

Material:

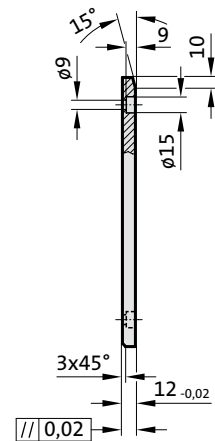
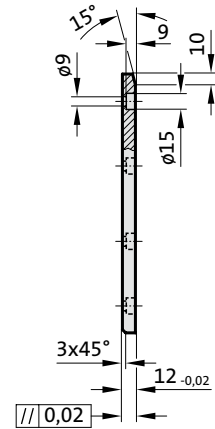
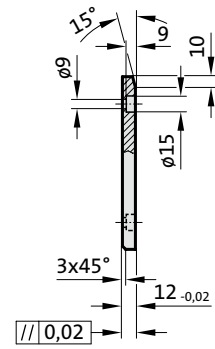
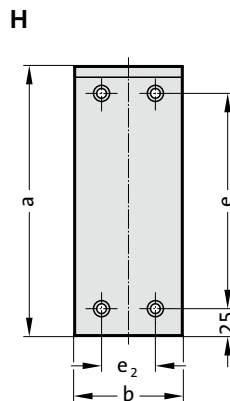
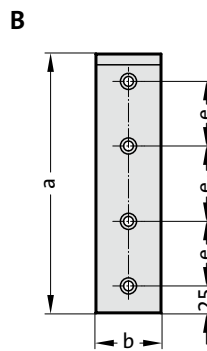
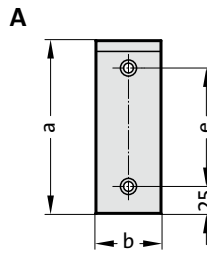
Steel, surface hardened

Note:

Screws are not included.

Fixing:

Use socket cap screws DIN EN ISO 4762 M8.



SLIDING PAD, STEEL, VDI 3357

2960.88. Sliding pad, Steel, VDI 3357

Order No	Shape	b	a	e	e ₁	e ₂	Number of screw holes
2960.88.030.080	A	30	80	30	-	-	2
2960.88.030.100	A	30	100	50	-	-	2
2960.88.030.125	A	30	125	75	-	-	2
2960.88.030.160	A	30	160	110	-	-	2
2960.88.030.200	A	30	200	150	-	-	2
2960.88.040.080	A	40	80	30	-	-	2
2960.88.040.100	A	40	100	50	-	-	2
2960.88.040.125	A	40	125	75	-	-	2
2960.88.040.160	A	40	160	110	-	-	2
2960.88.040.200	A	40	200	150	-	-	2
2960.88.040.225	A	40	225	175	-	-	2
2960.88.040.240	B	40	240	60	70	-	4
2960.88.040.250	B	40	250	60	80	-	4
2960.88.040.260	B	40	260	60	90	-	4
2960.88.040.280	B	40	280	60	110	-	4
2960.88.050.080	A	50	80	30	-	-	2
2960.88.050.100	A	50	100	50	-	-	2
2960.88.050.125	A	50	125	75	-	-	2
2960.88.050.160	A	50	160	110	-	-	2
2960.88.050.180	A	50	180	130	-	-	2
2960.88.050.200	A	50	200	150	-	-	2
2960.88.050.225	A	50	225	175	-	-	2
2960.88.050.240	B	50	240	60	70	-	4
2960.88.050.250	B	50	250	60	80	-	4
2960.88.050.260	B	50	260	60	90	-	4
2960.88.050.280	B	50	280	60	110	-	4
2960.88.060.080	A	60	80	30	-	-	2
2960.88.060.100	A	60	100	50	-	-	2
2960.88.060.125	A	60	125	75	-	-	2
2960.88.060.160	A	60	160	110	-	-	2
2960.88.060.180	A	60	180	130	-	-	2
2960.88.060.200	A	60	200	150	-	-	2
2960.88.060.225	A	60	225	175	-	-	2
2960.88.060.240	B	60	240	60	70	-	4
2960.88.060.250	B	60	250	60	80	-	4
2960.88.060.260	B	60	260	60	90	-	4
2960.88.060.280	B	60	280	60	110	-	4
2960.88.060.300	B	60	300	80	90	-	4
2960.88.060.320	B	60	320	80	110	-	4
2960.88.060.340	B	60	340	80	130	-	4
2960.88.060.350	B	60	350	100	100	-	4
2960.88.080.080	A	80	80	30	-	-	2
2960.88.080.100	A	80	100	50	-	-	2
2960.88.080.125	A	80	125	75	-	-	2
2960.88.080.160	A	80	160	110	-	-	2
2960.88.080.200	A	80	200	150	-	-	2
2960.88.080.225	A	80	225	175	-	-	2
2960.88.080.240	B	80	240	60	70	-	4
2960.88.080.250	B	80	250	60	80	-	4
2960.88.080.260	B	80	260	60	90	-	4
2960.88.080.280	B	80	280	60	110	-	4
2960.88.080.300	B	80	300	80	90	-	4
2960.88.080.320	B	80	320	80	110	-	4
2960.88.080.340	B	80	340	80	130	-	4
2960.88.080.350	B	80	350	100	100	-	4
2960.88.100.125	H	100	125	75	-	50	4
2960.88.100.160	H	100	160	110	-	50	4
2960.88.100.200	H	100	200	150	-	50	4
2960.88.100.225	H	100	225	175	-	50	4
2960.88.100.250	B	100	250	60	80	-	4
2960.88.100.250.1	H	100	250	200	-	50	4
2960.88.100.280	B	100	280	60	110	-	4
2960.88.100.300	B	100	300	80	90	-	4
2960.88.100.320	B	100	320	80	110	-	4
2960.88.100.340	B	100	340	80	130	-	4
2960.88.100.350	B	100	350	100	100	-	4