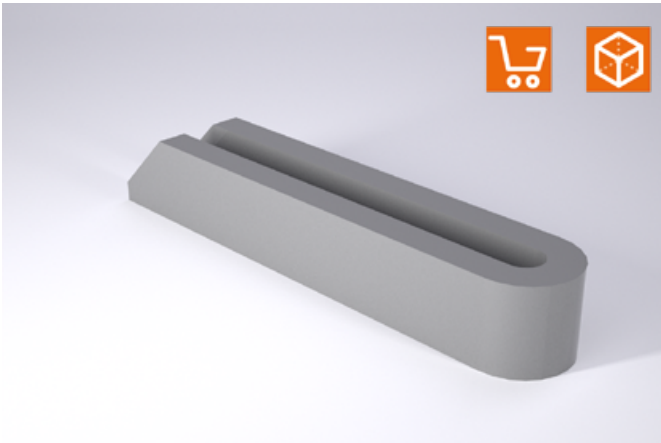


CLAMP, FORKED SHAPE, DIN 6315-B CLAMPING CLAW, GOOSE-NECK SHAPE



Material:

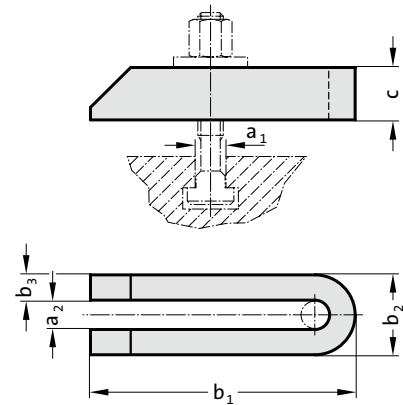
Heat-treated steel, painted

Note:

Holding and contact surfaces are plane-parallel. High clamping forces can be achieved by using high-strength screws conforming to DIN 787. The dimensions of the holding strap should be matched to the strength of the bolts.

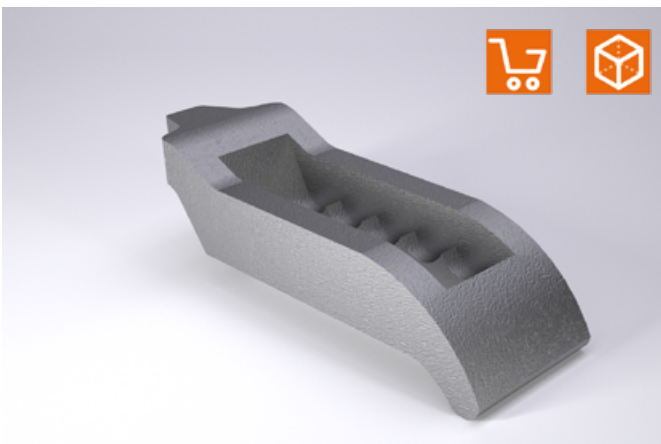
Supplied without clamping bolt, suitable clamping bolts: 2140.30.

2140.17.



2140.17. Clamp, forked shape, DIN 6315-B

Order No	a ₁	a ₂	b ₁	b ₂	b ₃	c
2140.17.09.080	8	9	80	25	8	15
2140.17.11.100	10	11	100	31	10	20
2140.17.14.125	12	14	14	125	38	12
2140.17.14.160	12	14	14	160	38	12
2140.17.14.200	12	14	14	200	38	12
2140.17.18.160	16	18	18	160	48	15
2140.17.18.200	16	18	18	200	48	15
2140.17.18.250	16	18	18	250	48	15
2140.17.22.200	20	22	22	200	52	15
2140.17.22.250	20	22	22	250	62	20
2140.17.22.315	20	22	22	315	62	20
2140.17.26.200	24	26	200	66	20	40
2140.17.26.250	24	26	250	66	20	40
2140.17.26.315	24	26	315	66	20	40



Material:

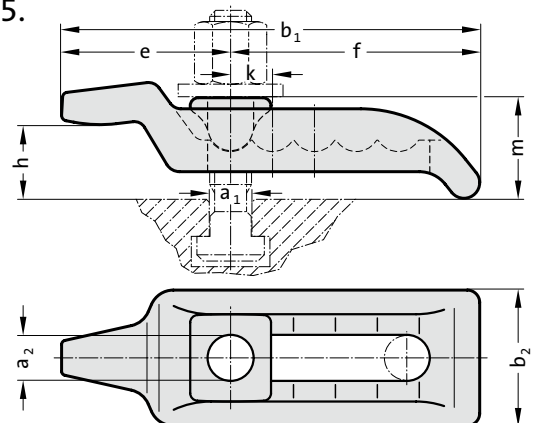
Steel, forged and heat-treated , galvanised and yellow passivated

Note:

Clamping claws quickly span very different clamping heights without the need for additional supports and take up very little space on the machine table. They are designed for maximum loads and are particularly suitable for clamping cutting and punching tools.

Supplied without clamping bolt, suitable clamping bolts: 2140.30.

2140.15.

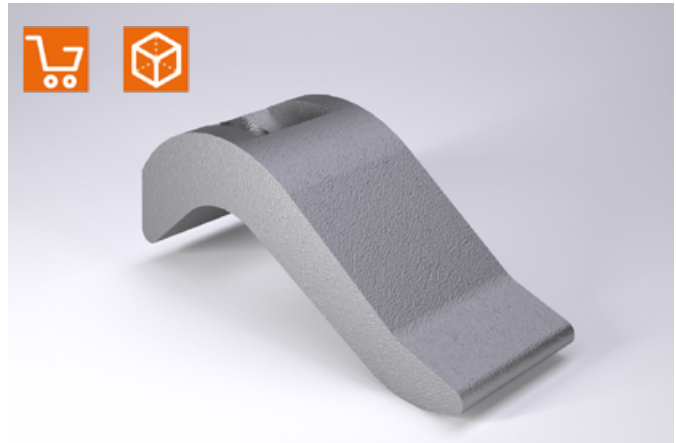
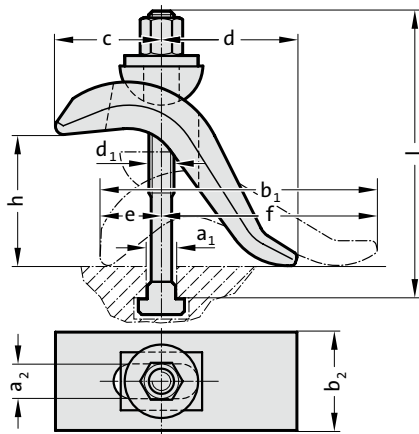


2140.15. Clamping claw, goose-neck shape

Order No	a ₁	a ₂	b ₁	b ₂	e	f	k	m	Clamping height h
2140.15.22	20	22	22	200	66	88	112	20	25 - 50
2140.15.26	24	26	26	232	76	97	135	24	30 - 70
2140.15.32	36	32	263	90	107	156	28	80	40 - 75

CLAMPING CLAW, INFINITELY VARIABLE

2140.13.



2140.13. Clamping claw, infinitely variable

Order No	a ₁	a ₂	b ₁	b ₂	c	d	e	f	h*	Clamping bolt
										d ₁ x a ₁ x l
2140.13.12.17	12	17	140	50	55	60	30	110	0-50	M12x12x125
2140.13.14.17	14	17	140	50	55	60	30	110	0-50	M12x14x125
2140.13.16.17	16	17	140	50	55	60	30	110	0-75	M16x16x160
2140.13.18.17	18	17	140	50	55	60	30	110	0-75	M16x18x160
2140.13.16.21	16	21	175	60	70	80	40	135	0-65	M16x16x160
2140.13.18.21	18	21	175	60	70	80	40	135	0-65	M16x18x160
2140.13.22.21	22	21	175	60	70	80	40	135	0-85	M20x22x200

*Clamping height

Material:

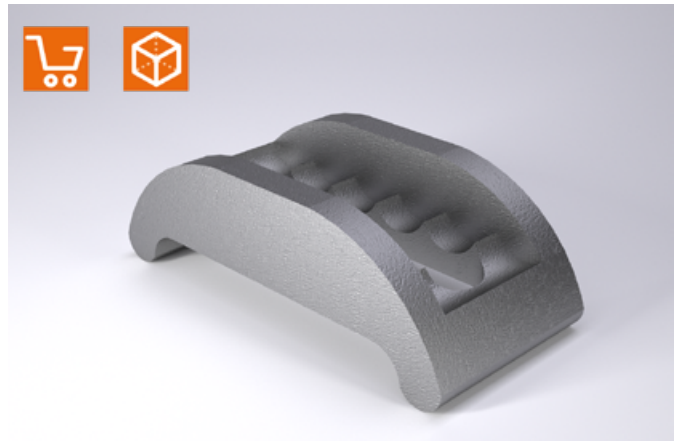
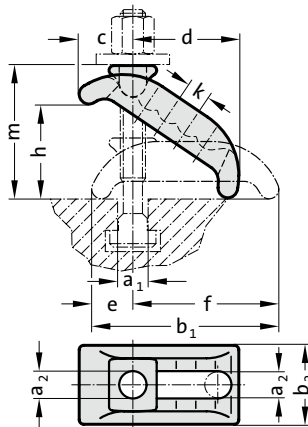
Steel, forged and head-treated, tempered in burnishing clay.

Note:

Clamping claws quickly span very different clamping heights without the need for additional supports and take up very little space on the machine table. They are designed for maximum loads and are particularly suitable for clamping cutting and punching tools.

Supplied with clamping bolt, suitable clamping bolts: 2140.30.

2140.14.



2140.14. Clamping claw, infinitely variable

Order No	a ₁	a ₂	b ₁	b ₂	c	d	e	f	k	m	h _{max}
2140.14.13	14	13	88	38	28	48	23	68	14	52	35
2140.14.18	18	18	130	56	38	74	29	101	18	80	55
2140.14.22	22	22	140	66	46	80	32	112	20	98	65
2140.14.26	28	26	174	76	52	100	39	135	24	110	75
2140.14.32	36	32	200	90	61	110	44	156	28	118	80

Material:

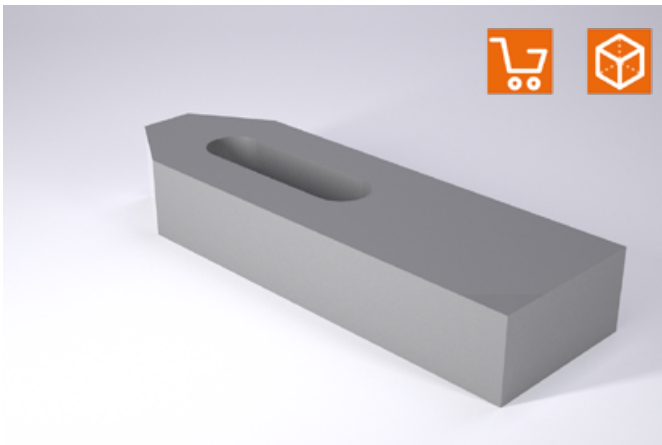
Steel, forged and heat-treated, galvanised and yellow passivated

Note:

Clamping claws quickly span very different clamping heights without the need for additional supports and take up very little space on the machine table. They are designed for maximum loads and are particularly suitable for clamping cutting and punching tools.

Supplied without clamping bolt, suitable clamping bolts: 2140.30.

CLAMP, STRAIGHT, DIN 6314 CLAMP, STRAIGHT, WITH SETSCREW



Material:

Heat-treated steel, painted

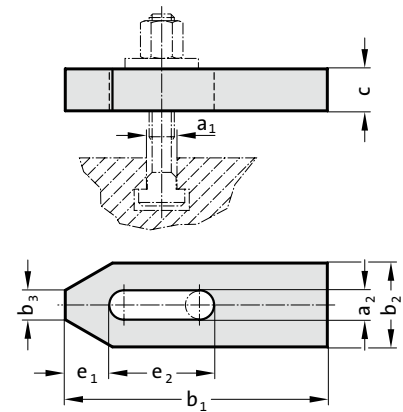
Note:

Holding and contact surfaces are plane-parallel. High clamping forces can be achieved by using high-strength screws conforming to DIN 787. The dimensions of the holding strap should be matched to the strength of the bolts.

Supplied without clamping bolt, suitable clamping bolts: 2140.30.

2140.16.26.250: c = 35 mm, does not conform to DIN

2140.16.



2140.16. Clamp, straight, DIN 6314

Order No	a ₁	a ₂	b ₁	b ₂	b ₃	c	e ₁	e ₂
2140.16.09.060	8	9	60	25	10	12	13	22
2140.16.11.080	10	11	80	30	12	15	15	30
2140.16.14.100	12	14	100	40	14	20	21	40
2140.16.14.125	12	14	125	40	14	20	21	50
2140.16.18.125	16	18	125	50	18	25	26	45
2140.16.18.160	16	18	160	50	18	25	26	65
2140.16.22.160	20	22	160	60	22	30	30	60
2140.16.22.200	20	22	200	60	22	30	30	80
2140.16.26.200	24	26	200	70	26	30	35	80
2140.16.26.250	24	26	250	70	26	35	35	105



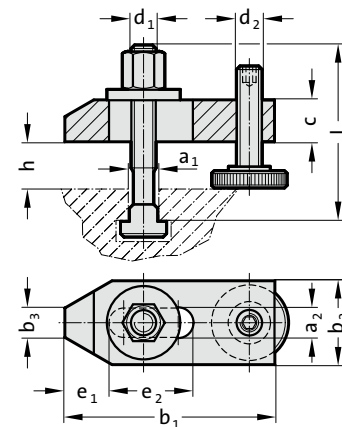
Material:

Heat-treated steel, painted

Note:

Supplied with setscrew and clamping bolt for T grooves conforming to DIN 787 8.8 with nut and washer.

2140.10.



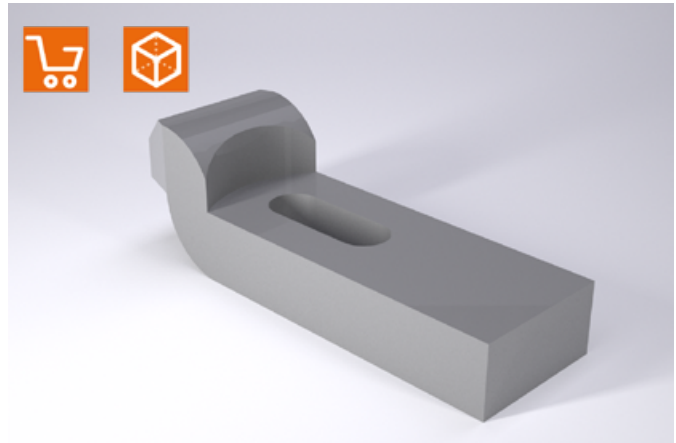
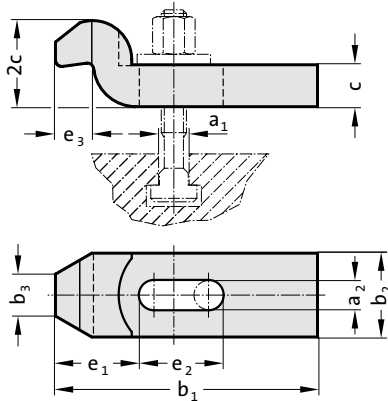
2140.10. Clamp, straight, with setscrew

Order No	a ₁	a ₂	b ₁	b ₂	b ₃	c	d _{1,2}	e ₁	e ₂	h*	Clamping bolt d ₁ x a ₁ x l
2140.10.10	10	11	80	30	12	15	M10	15	30	8 - 32	M10x10x80
2140.10.12	12	14	100	40	14	20	M12	21	40	10 - 40	M12x12x100
2140.10.14	14	14	100	40	14	20	M12	21	40	10 - 38	M12x14x100
2140.10.16	16	18	125	50	18	25	M16	26	45	13 - 49	M16x16x125
2140.10.18	18	18	125	50	18	25	M16	26	45	13 - 46	M16x18x125
2140.10.20	20	22	160	60	22	30	M20	30	60	16 - 65	M20x20x160
2140.10.22	22	22	160	60	22	30	M20	30	60	16 - 65	M20x22x160

*Clamping height depends on the groove depth

CLAMP, GOOSE NECK SHAPE, DIN 6316 CLAMP, GOOSE NECK SHAPE, WITH SETSCREW

2140.18.



2140.18. Clamp, goose neck shape, DIN 6316

Order No	a ₁	a ₂	b ₁	b ₂	b ₃	c	e ₁	e ₂	e ₃
2140.18.09.080	8	9	80	25	12	12	25	25	9
2140.18.11.100	10	11	100	30	15	15	32	32	12
2140.18.14.125	12	14	125	40	20	20	40	40	16
2140.18.18.125	16	18	125	50	25	25	49	49	20
2140.18.18.160	16	18	160	50	25	25	49	50	20
2140.18.22.160	20	22	160	60	30	30	55	55	24
2140.18.22.200	20	22	200	60	30	30	55	70	24
2140.18.26.200	24	26	200	70	35	30	72	60	28
2140.18.26.250	24	26	250	70	35	35	72	80	28

Material:

Heat-treated steel, painted

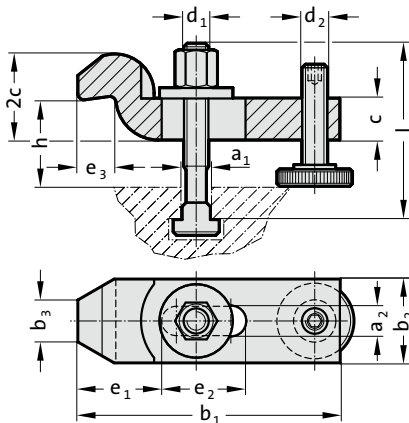
Note:

Holding and contact surfaces are plane-parallel. High clamping forces can be achieved by using high-strength screws conforming to DIN 787. The dimensions of the holding strap should be matched to the strength of the bolts.

Supplied without clamping bolt,
suitable clamping bolts: 2140.30.

2140.18.26.250: c = 35 mm, does not conform to DIN

2140.11.



2140.11. Clamp, goose neck shape, with setscrew

Order No	a ₁	a ₂	b ₁	b ₂	b ₃ ,c	d _{1,2}	e ₁	e ₂	e ₃	h*	Clamping bolt	
											d ₁ x a ₁ x l	
2140.11.10	10	11	100	30	15	M10	32	32	12	22	- 46	M10x10x80
2140.11.12	12	14	125	40	20	M12	40	40	16	28	- 58	M12x12x100
2140.11.14	14	14	125	40	20	M12	40	40	16	28	- 56	M12x14x100
2140.11.16	16	18	160	50	25	M16	49	50	20	36	- 72	M16x16x125
2140.11.18	18	18	160	50	25	M16	49	50	20	36	- 69	M16x18x125
2140.11.20	20	22	200	60	30	M20	55	70	24	43	- 92	M20x20x160
2140.11.22	22	22	200	60	30	M20	55	70	24	43	- 92	M20x22x160

*Clamping height depends on the groove depth

Material:

Heat-treated steel, painted

Note:

Supplied with setscrew and clamping bolt for T grooves conforming to DIN 787 8.8 with nut and washer.