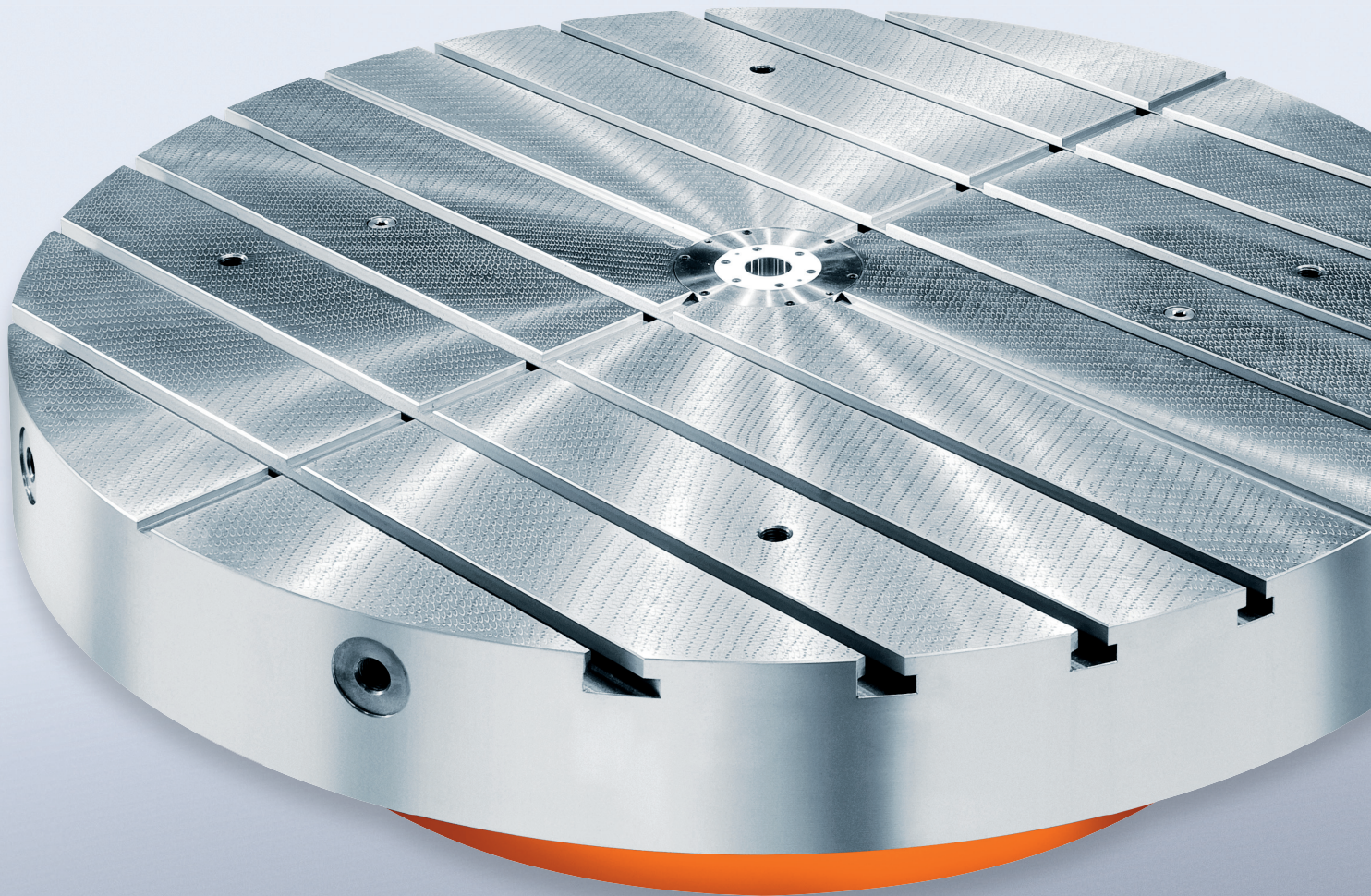


WE LOVE TECHNOLOGY



DIRECT-DRIVEN
HIGH-SPEED ROTARY TABLES
FIBRODYN DA®



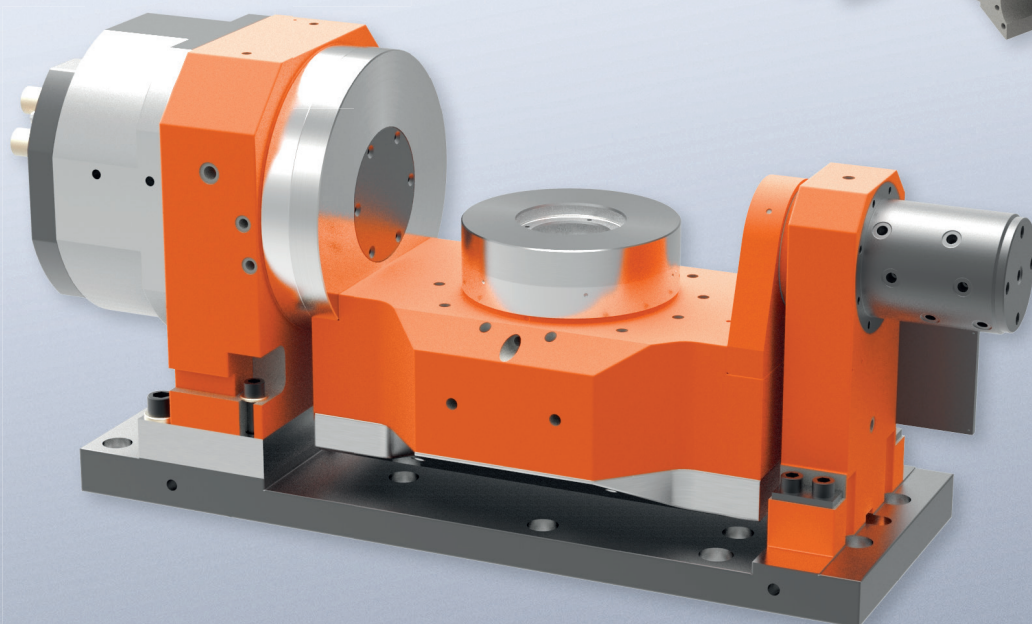
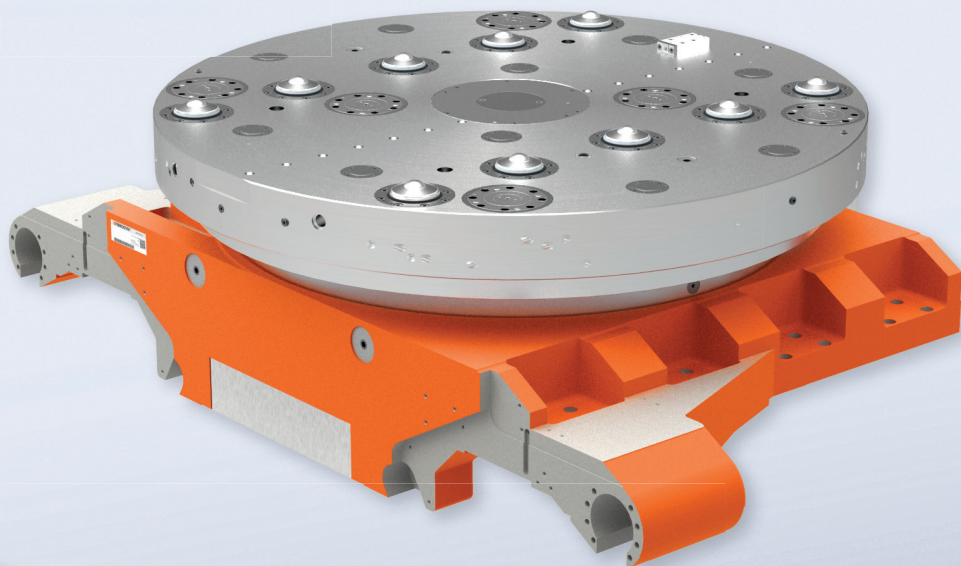
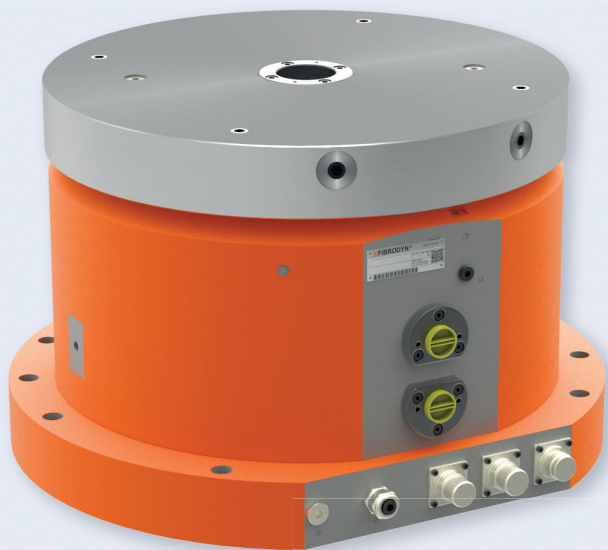
ROTOCUTTING

Rotary Tables for Machine Tools

MEMBER OF THE LÄPPLE GROUP



A TURBO AMONG **ROTARY TABLES**



TECHNICAL HIGHLIGHTS DRIVING YOUR COMPETITIVE ADVANTAGE

FIBRODYN DA® DIRECT-DRIVEN ROTARY TABLES WITH TORQUE MOTOR HAVE BEEN DESIGNED FOR HIGHLY DYNAMIC AND HIGH-PRECISION APPLICATIONS IN MACHINE TOOLS.

FIBRO has been a leading supplier of rotary-table solutions for combined milling/turning applications for a long time now. For the first time ever, FIBRODYN DA® allows for rotational options up to 2,000 rpm, while workpieces for milling and drilling operations can be accurately positioned. Its innovative cooling design ensures a high level of process reliability and precision even for highly complex operations. The rotary table may be equipped with flexible appliances for chuck, pallets or fixtures. With rotary joints and media distributors, they can be supplied

reliably with power, fluids and signals even at full rotational speed. A direct drive in the rotary axes free from backlash, wear and maintenance as well as an integrated measuring system ensure that any position can be driven in immediate succession with an indexing accuracy of up to ± 2.5 arc seconds and a repeat accuracy of up to ± 0.25 arc seconds.

TECHNICAL HIGHLIGHTS

- Torque motor provides maximum dynamics
- Extremely short positioning times, for example $t_s = 0.36$ s for 180°
- Flexible positioning in freely selectable angular steps
- Zero backlash and high performance as a result of no gearing
- Very high and very low uniform rotational speeds
- Indexing accuracy depending on control and measuring system up to ± 2 arc seconds
- Highest repeat accuracy < 0.2 arc seconds
- Outstanding axial and radial runout accuracy
- Hydraulic table top clamping for force-fit connection between table top and housing
- Compact design
- Very high operational safety and long-term accuracy

SAMPLE DATA FIBRODYN DA® 1.08

Indexing table, round	mm	Ø 1,000–2,000
Table top speed	rpm	max. 400
Permissible axial loading in horizontal use	N	150,000
Permissible radial loading on the indexing table	N	200,000
Permissible tilting moment in horizontal use	Nm	60,000
Permissible transport load in horizontal use (milling)	kg	10,000
Permissible transport load in horizontal use (turning)	kg	4,000
Tangential moment with hydraulic clamping (64 bar)	Nm	26,000
Indexing accuracy in arc seconds (depending on control and measuring system)		up to ± 2
Runout centre bore	mm	0.010
Axial runout accuracy at ø 1,600 mm	mm	0.025

FIBRO GMBH

Business Area Rotary Tables
Weidachstraße 41-43
74189 Weinsberg
GERMANY
T +49 7134 73-0
info@fibro.de
www.fibro.com

THE LÄPPLE GROUP

LÄPPLE AUTOMOTIVE
FIBRO
FIBRO LÄPPLE TECHNOLOGY
LÄPPLE AUS- UND WEITERBILDUNG

BRANCH OFFICES

FIBRO FRANCE SARL

26 Avenue de l'Europe
67300 Schiltigheim
FRANCE
T +33 390 204040
info@fibro.fr
www.fibro.com

FIBRO INDIA**PRECISION PRODUCTS PVT. LTD.**

Plot No: A-55, Phase II, Chakan Midc,
Taluka Khed, Pune - 410 501
INDIA
T +91 2135 33 88 00
info@fibro-india.com
www.fibro.com

FIBRO INC.

139 Harrison Avenue
Rockford, IL 61104
USA
T +1 815 2291300
info@fibroinc.com
www.fibro.com

FIBRO**PRECISION PRODUCTS CO., LTD.**

1st Floor, Building 3, No. 253, Ai Du Road
Pilot Free Trade Zone, Shanghai 200131
CHINA
T +86 21 60 83 15 96
info@fibro.cn
www.fibro.com

FIBRO ASIA PTE. LTD.

9 Changi South Street 3, #07-04
Singapore 486361
SINGAPORE
T +65 65 439963
info@fibro-asia.com
www.fibro.com