

PNEUMATIC CONVEYOR



PNEUMATIC CONVEYOR

Description:

This pneumatic conveyor is unique and is patented. It was designed to provide an effective and affordable solution to the problems of conveying parts and disposing of waste. This beltless system conveys stampings and waste from the tool area by vibration alone.

A specially designed guide channel which is screwed to the body of the conveyor vibrates rhythmically slowly forwards and fast backwards. The mass inertia of the parts is used to move them forwards. In this way the parts in the guide channel progress gently towards the storage containers.

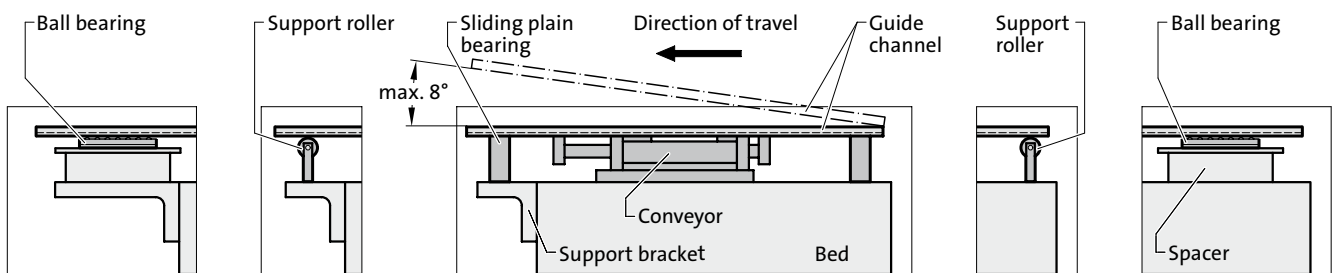
The conveyor is maintenance-free and has a very low air consumption so is extremely economical in operation.

The pneumatic conveyor is quiet running and very user friendly.

The conveyor was originally designed for press shop use but can be used as a conveyor with any tool. Blockages are a thing of the past whether the conveyor is feeding parts for assembly or removing and disposing of stampings and waste parts.

Guides

We recommend three options for supporting a long guide channel:
 1) Ball bearings 2) Roller supports 3) Sliding plain bearings



Technical data:

Model	Max. load [kg]	air consumption [l/min.]	sound level [db-A]	Stroke length [mm]	Guide channel weight max. [kg]	Despatch weight [kg]
2199.03	3	0,55	68	20	1,4	1,4
2199.10	10	1,25	68	25	2,7	2,8
2199.40.1	40	5,42	70	27	5,4	7,2
2199.70	70	5,42	70	27	11,3	5,5

Recommended number of strokes: 120 /min.

Speed of travel: 8 - 10 m/min.

Operating pressure: 4 - 5.5 bar



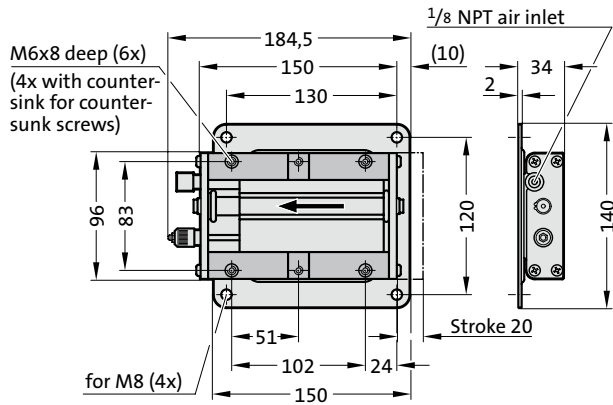
Note:

Do not exceed 5.5 bar as excess pressure will damage the transporter.

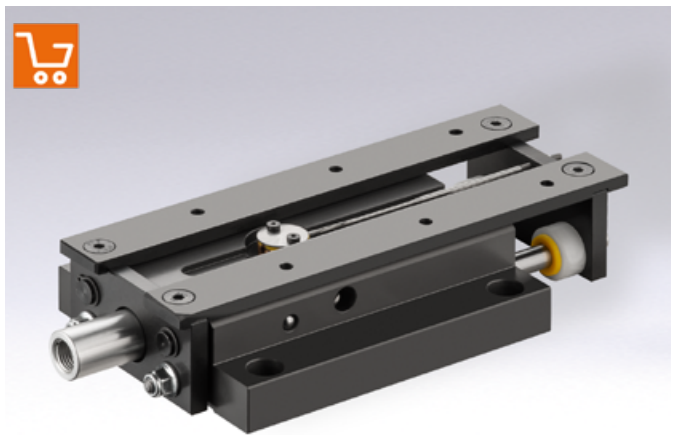
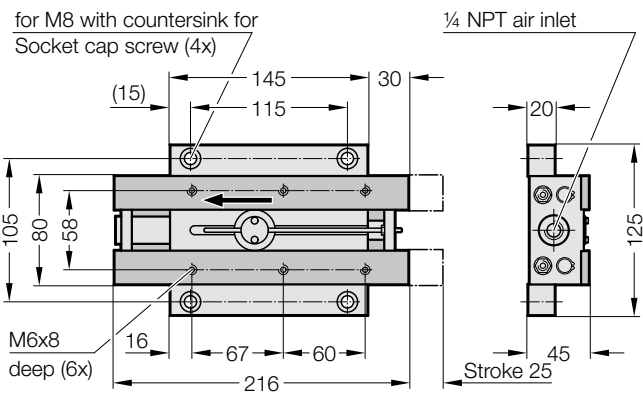
Additional protection for the transporter can be provided by including a service unit in the circuit. This consists of a filter, pressure control valve and lubricator.

PNEUMATIC CONVEYOR

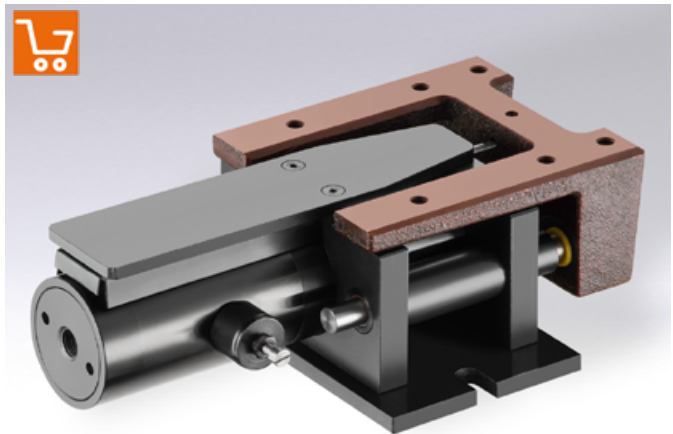
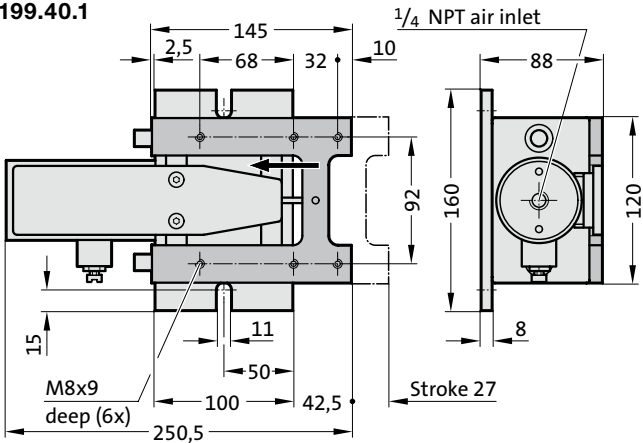
2199.03



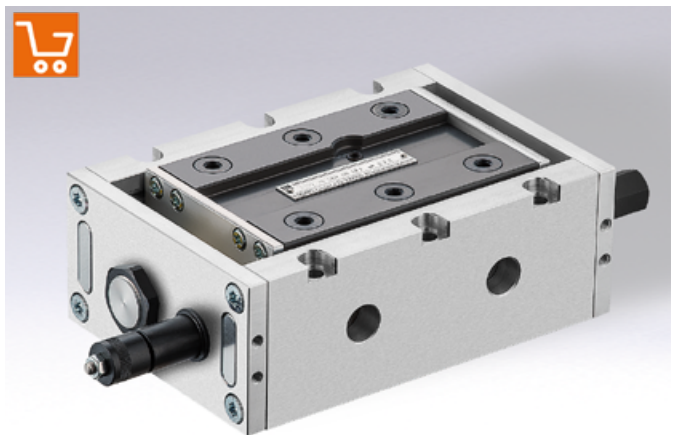
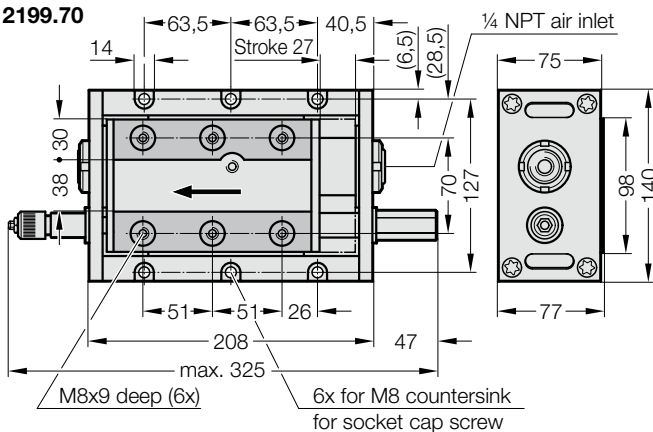
2199.10



2199.40.1



2199.70

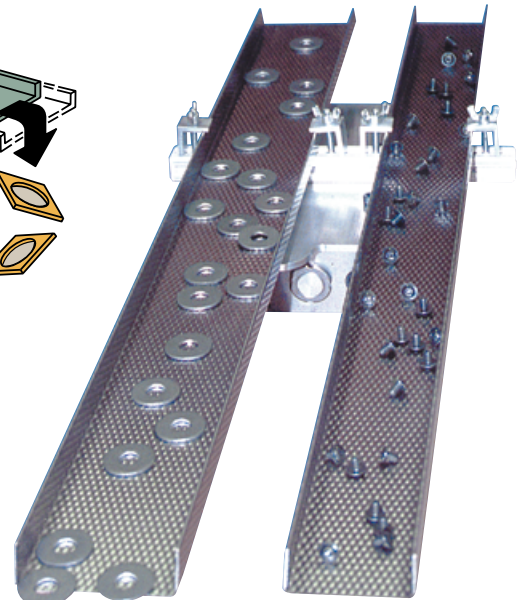
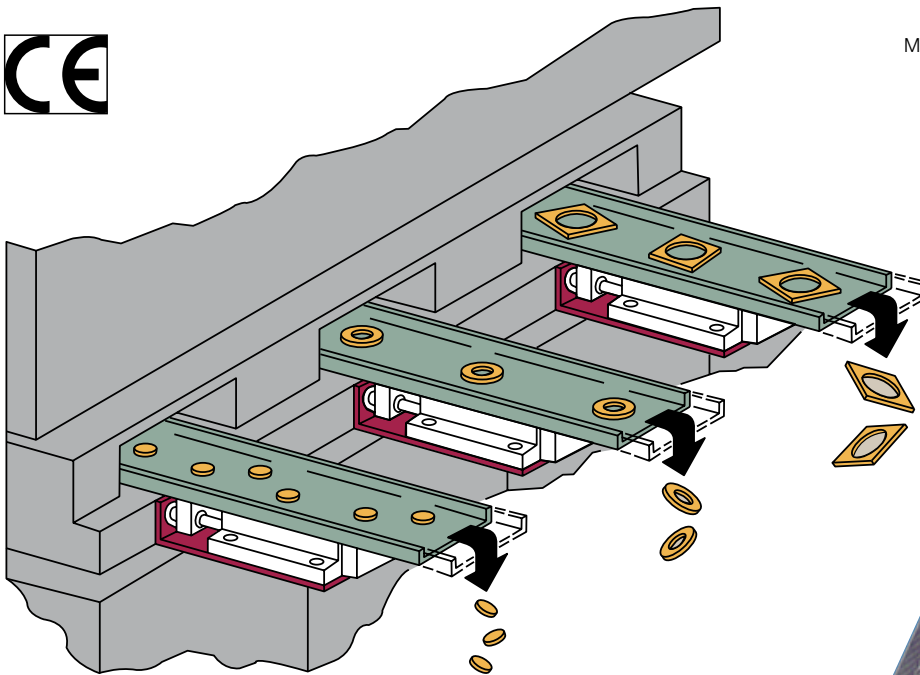
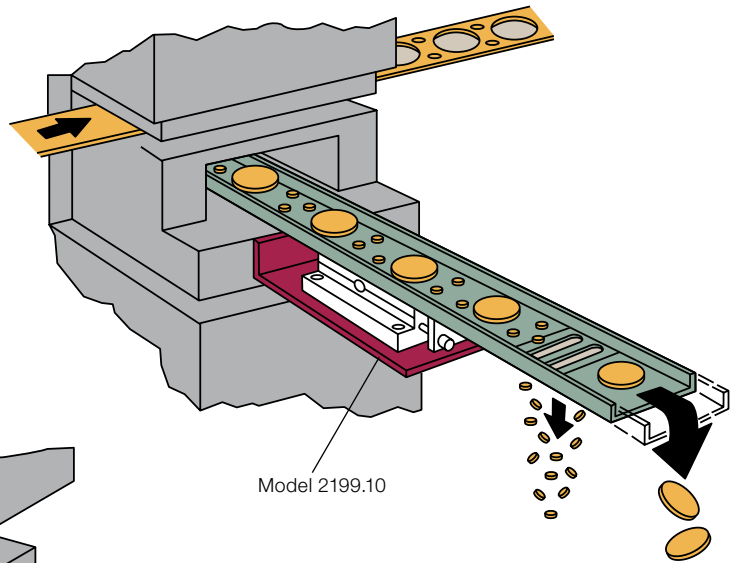


PNEUMATIC CONVEYOR

2199.03/10/40/70

How does the pneumatic conveyor work?

This compact pneumatic conveyor is driven by compressed air. The vibrating rhythmic motion conveys stampings and stamping waste whilst reducing your costs. Guide channels can be matched to any tool opening and used for sorting various types of waste.



The guide channels are highly adaptable.

