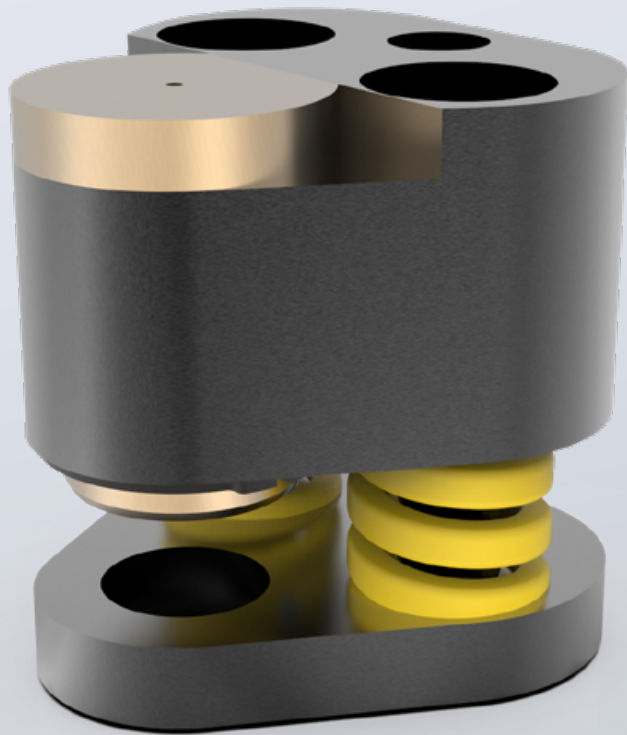


ACCESSORIES

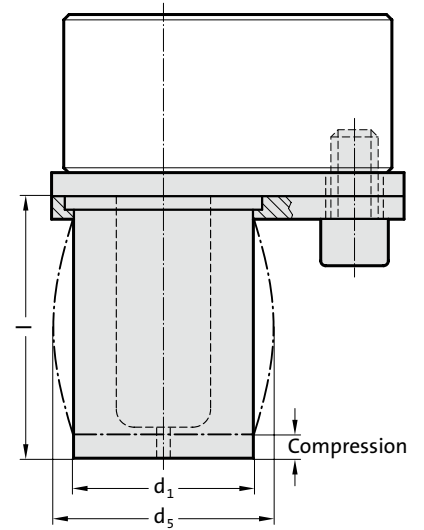
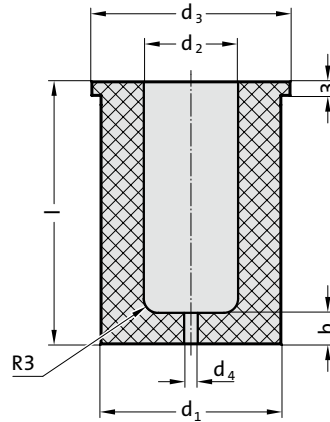


ELASTOMER STRIPPER



2431.7.

Mounting example:



Material:

FIBROFLEX® 95 Shore A

Note:

Stripping units can be used for retainers 2664.02./04./05./06./10.

* values for the stripping force are dependent on a number of parameters (e.g. lubricant, temperature etc.) and may vary from those given here.

** max spring travel should not exceed 15% of the length

2431.7. Elastomer Stripper

d ₂	d ₁	d ₃	d ₄	d ₅ max.	b	Stripping unit length l				
						35	43	53	63	73
10	18	21	1,6	22	6	○	●	●	●	
13	23	26	3	26,5	6	○	●	●	●	●
16	28	31	3	34	6	○	●	●	●	●
20	33	36	3	38	7	○	●	●	●	●
25	40	43	3	47,6	7	○	●	●	●	●
32	50	55	3	57,9	7	○	●	●	●	●
38	60	65	3	69,6	8	○	○	○	○	○
40	60	65	3	69,6	8		●	●	●	○
						Punch lengths in use				
Ball-lock punch, light duty						63	71	80	90	100
Ball-lock punch, heavy duty						71	80	90	100	110
Precision punch ISO 8020						-	71	80	90	100
○ = Special measures upon request										

stroke**	3mm			6mm			9mm			3mm			6mm			9mm		
	35	35	35	43	43	43	53	53	53	63	63	63	73	73	73	73	73	
d ₂	Stripping forces (N)*																	
10	1300	-	-	1060	1820	-	900	1650	-	720	1450	1860	-	-	-	-	-	-
13	2100	-	-	1700	2850	-	1460	2610	-	1170	2320	2910	930	2080	2500	-	-	-
16	3000	-	-	2310	3900	-	1990	3560	-	1590	3150	3980	1270	2810	3440	-	-	-
20	3500	-	-	2900	4900	-	2500	4470	-	2000	3950	5000	1590	3420	4330	-	-	-
25	5400	-	-	4440	7520	-	3810	6860	-	3050	6050	7680	2420	5390	6780	-	-	-
32	8400	-	-	6840	11390	-	5880	10450	-	4700	9310	11640	3740	8370	10280	-	-	-
38	-	-	-	9280	19740	-	8140	15890	-	6440	11570	18030	5460	8850	11680	-	-	-
40	-	-	-	10100	20190	-	8650	17300	-	6890	13780	20670	6000	9800	12700	-	-	-

Ordering Code (example):

Elastomer Stripper = 2431.7.

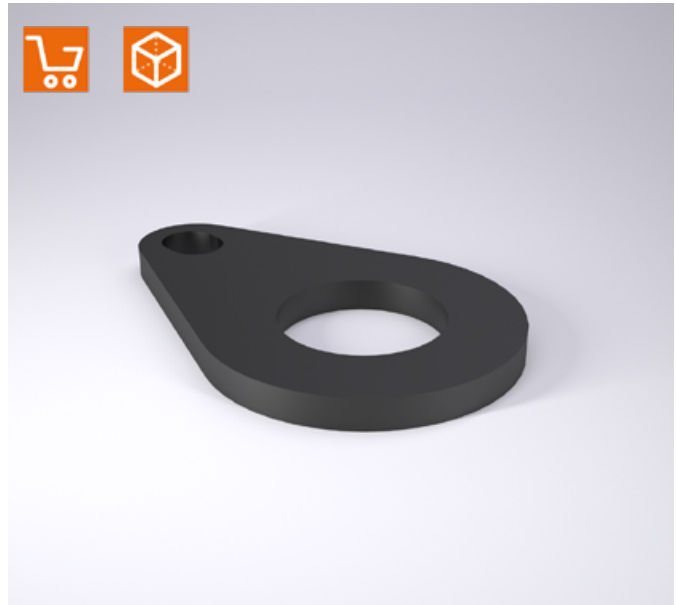
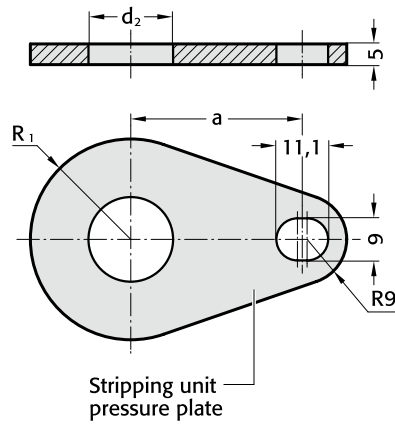
d₂ = 10 mm = 10.

l = 53 mm = 53

Order No = 2431.7.10.53

STRIPPING UNIT - PRESSURE PLATE

2667.1.



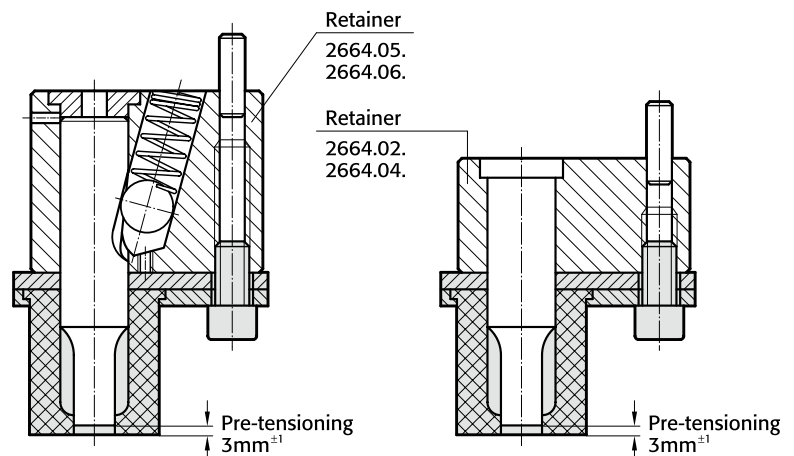
2667.1. Stripping unit - Pressure plate

Order No	d ₂	R ₁	a
2667.1.010	10	13	28
2667.1.013	13	15.5	31
2667.1.016	16	18	32.9
2667.1.020	20	20.5	34.8
2667.1.025	25	24	39.8
2667.1.032	32	31	41.3
2667.1.038	38	36	45
2667.1.040	40	36	45

Note:

Pressure plate, mounting plate and screw must all be ordered individually.

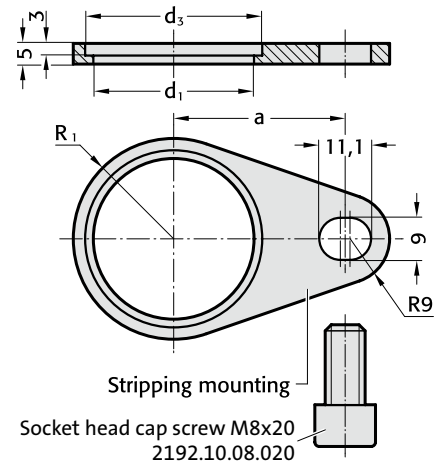
Mounting example



STRIPPING UNIT - MOUNTING PLATE



2667.2.



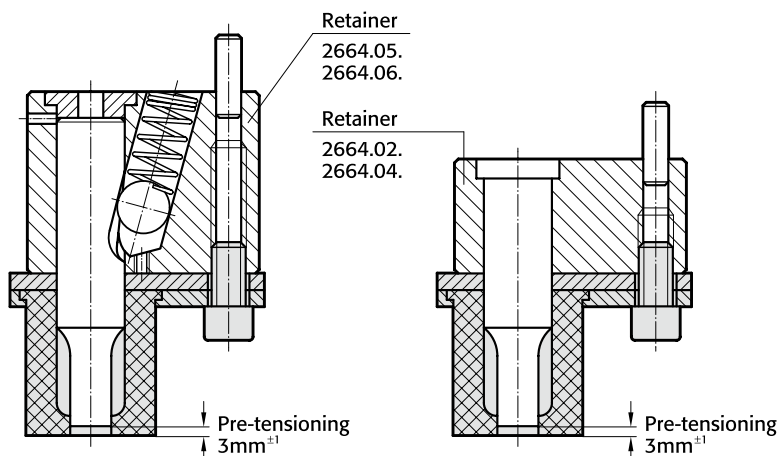
Note:

Pressure plate, mounting plate and screw must all be ordered individually.

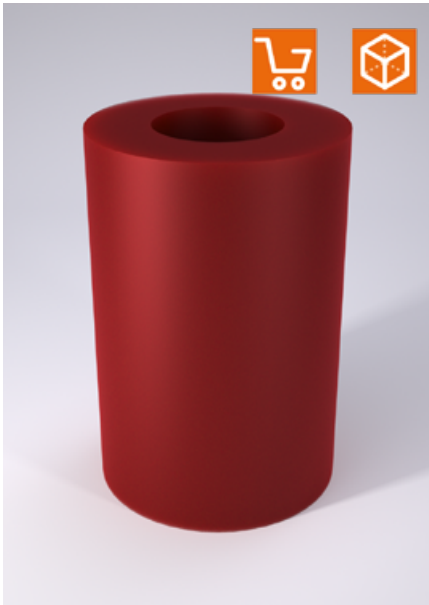
2667.2. Stripping unit - Mounting plate

Order No	d ₂	d ₁	d ₃	R ₁	a
2667.2.010	10	19	22	13	28
2667.2.013	13	24	27	15.5	31
2667.2.016	16	29	32	18	32.9
2667.2.020	20	34	37	20.5	34.8
2667.2.025	25	41	44	24	39.8
2667.2.032	32	51	56	31	41.3
2667.2.038	38	61	66	36	45
2667.2.040	40	61	66	36	45

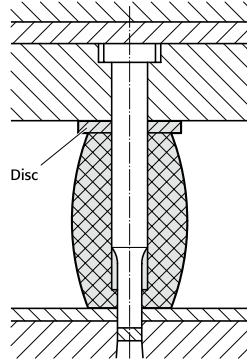
Mounting example



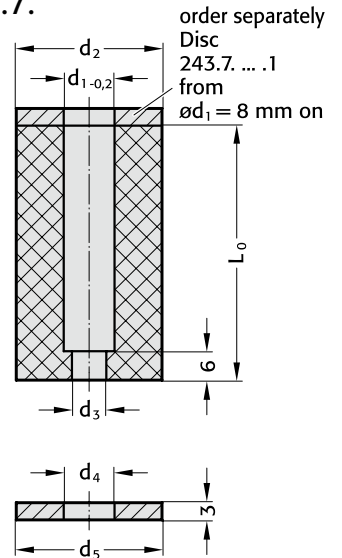
ELASTOMER STRIPPER



Mounting example



243.7.



Description:

Repairs, sharpening and modifications on dies equipped with elastomer strippers do not necessitate the dismantling of a stripper plate, thus becoming very expedient.

Any marring of delicate part surfaces is precluded. This makes elastomer strippers ideal for all painted, anodized, plastic-coated and polished parts. FIBROFLEX® Elastomer Strippers are resistant against oils and greases.

Material:

FIBROFLEX®
Hardness: 95 Shore A

Execution:

Stock lengths: 39, 47, 56 mm.
Other lengths on request (max. 56 mm)!

Application:

Especially in large dies, where the use of elastomer strippers does away with the need of huge stripper plates.

Mounting:

Push stripper over punch, where it will stay put on account of its elasticity.
No other form of retention will be required.
A single press stroke will then pierce a hole through the bottom portion of the stripper that matches the punch shape exactly.

243.7. Elastomer Stripper

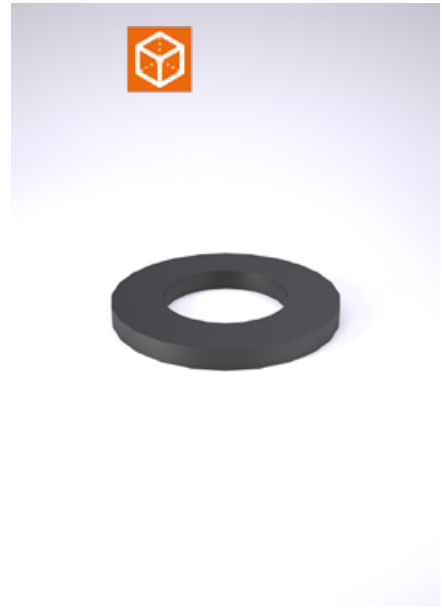
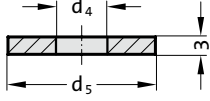
d ₁	d ₂	d ₃	L ₀	39	47	56
4	17	1.6		●	●	●
5	17	1.6		●	●	●
6	19	1.6		●	●	●
6.3	19	1.6		●	●	●
8	21	3		●	●	●
10	23	3		●	●	●
12.5	26	3		●	●	●
13	26	3		●	●	●
16	30	3		●	●	●
20	38	3		●	●	●
25	50	3		●	●	●
32	55	3		●	●	●
38	60	3		●	●	●
40	63	3		●	●	●

Ordering Code (example):

Elastomer Stripper	=	243.7.
Inner diameter d ₁	13 mm =	130.
Length L ₀	39 mm =	039
Order No	=	243.7. 130.039

WASHER

243.7. .1



Material:

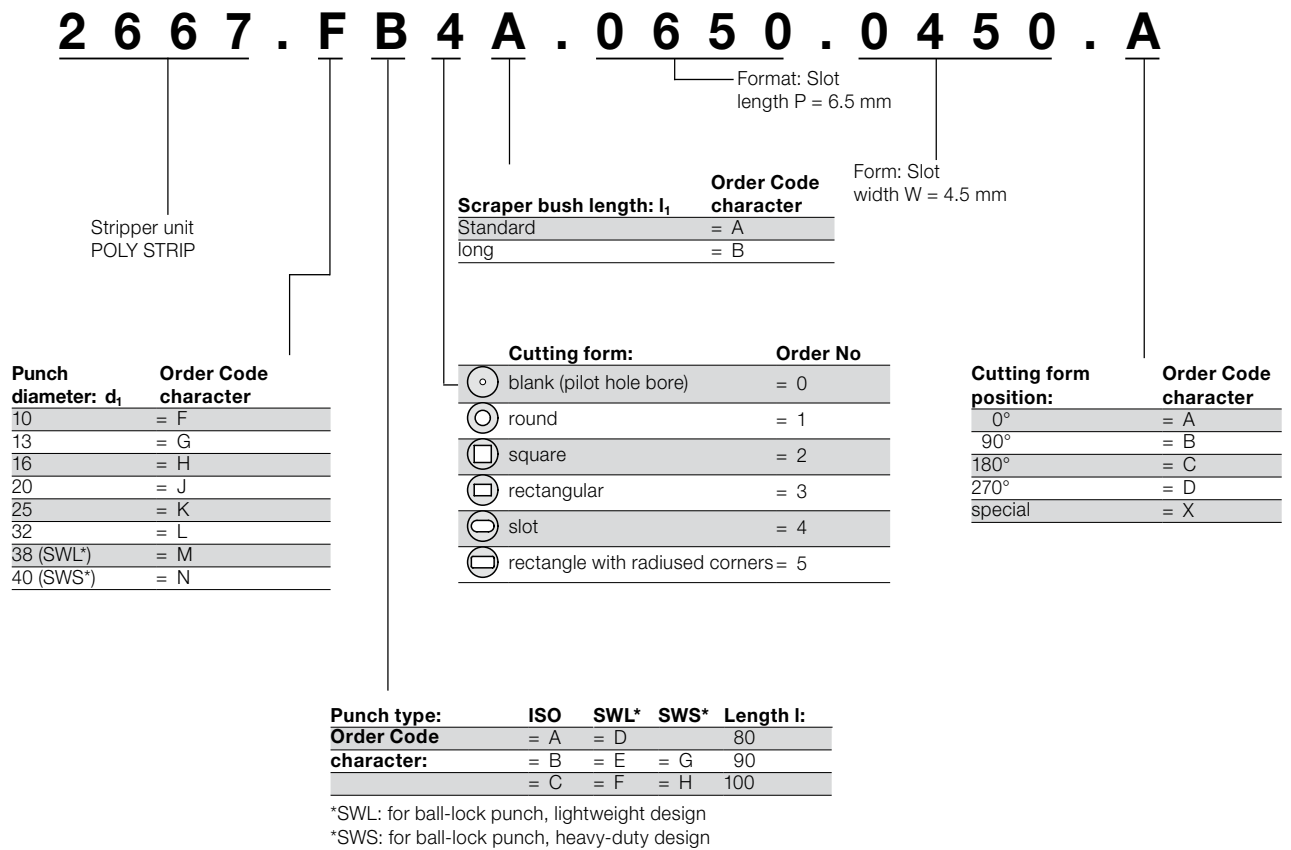
Steel

243.7. .1 Washer

Order No	d_4	d_5
243.7.085.1	8.5	21
243.7.105.1	10.5	23
243.7.130.1	13	26
243.7.135.1	13.5	26
243.7.165.1	16.5	30
243.7.205.1	20.5	38
243.7.255.1	25.5	50
243.7.325.1	32.5	55
243.7.385.1	38.5	60
243.7.405.1	40.5	63

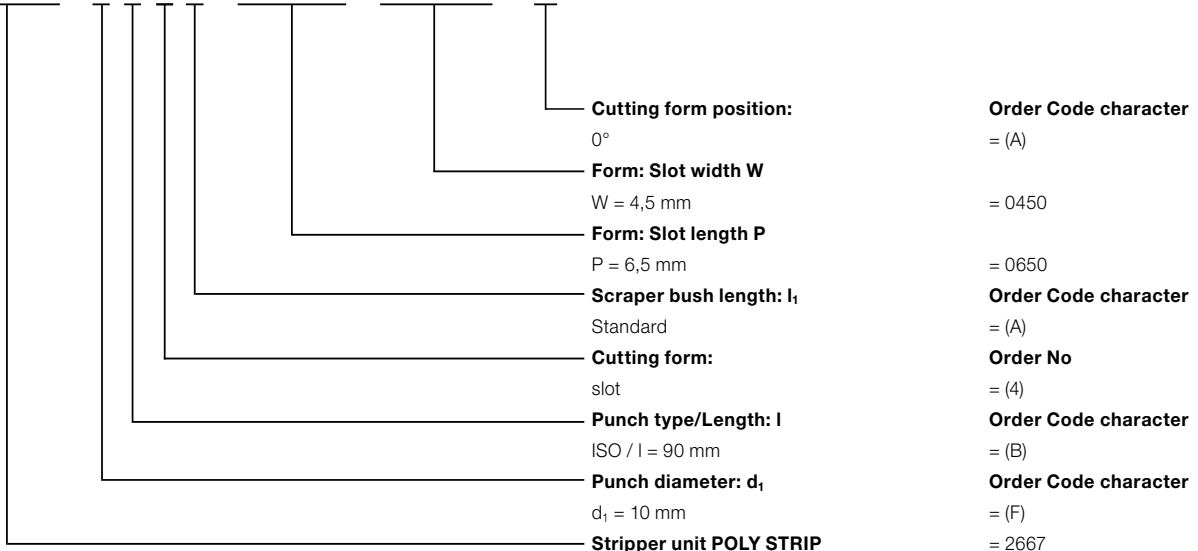
POLY STRIP STRIPPER UNIT - ORDER EXAMPLES

Note: See table for standard dimensions
Special dimensions to order



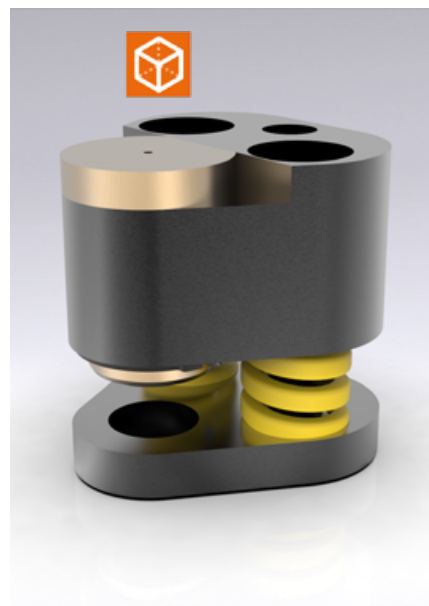
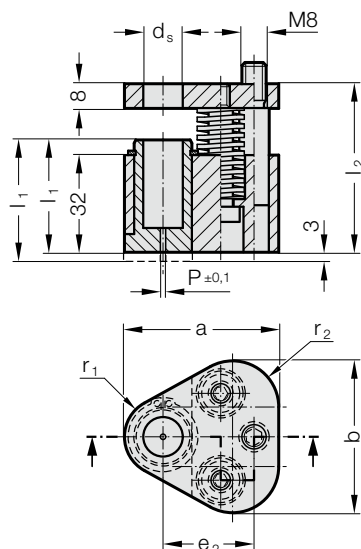
Ordering Code (example):

2 6 6 7 . F B 4 A . 0 6 5 0 . 0 4 5 0 . A



POLY STRIP STRIPPER UNIT, WITH START BOREHOLE, FOR ISO 8020 PUNCH

2667.□□0□.



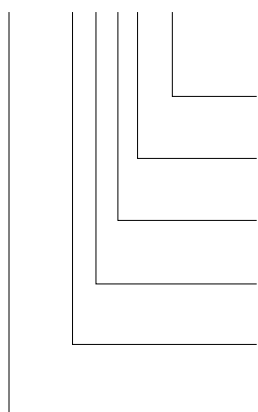
2667.xx0x. POLY STRIP stripper unit, with start borehole, for ISO 8020 punch

d _s / (Order Code character)	P	a	b	e ₂	r ₁	r ₂	l / (Order Code character)	80 (A)	90 (B)	100 (C)	l ₁ / (Order Code character)	37 (A)	40 (B)
							l ₂	55.5	65.5	75.5	S _(max)		
10 / (F)	1.5	44.5	43.7	26.925	9.5	12		●	●	●		●	●
13 / (G)	1.5	50.8	50	29.97	12.7	15.2		●	●	●		●	●
16 / (H)	1.5	54	53.2	31.75	14.3	16.8		●	●	●		●	●
20 / (J)	1.5	60.3	59.5	33.53	17.5	20		●	●	●		●	●
25 / (K)	1.5	69.9	69.1	40.64	22.2	24.7		●	●	●		●	●
32 / (L)	1.5	69.9	69.1	40.64	22.2	24.7		●	●	●		●	●

d _s / (Order Code character)	Punch length l	80	80	90	90	100	100
	Scraper bush l ₁	37	40	37	40	37	40
	Stripping force, max [N]	1022	884	1280	810	786	1098
10 / (F)		1022	884	1280	810	786	1098
13 / (G)		2856	1668	3128	1282	1920	2688
16 / (H)		5049	2714	5124	2180	3120	4368
20 / (J)		5049	2714	5124	2180	3120	4368
25 / (K)		5049	2714	5124	2180	3120	4368
32 / (L)		5049	2714	5124	2180	3120	4368

Ordering Code (example):

2667.FC0A.A



Cutting form position:

0°

Scraper bush length: l₁

Standard

Cutting form:

Start borehole

Punch type/length: l

ISO / l = 100 mm

Punch diameter: d_i

d_i = 10 mm

Stripper unit
POLY STRIP

Order Code character

= (A)

Order Code character

= (A)

Order No

= (0)

Order Code character

= (C)

Order Code character

= (F)

= 2667

Description:

The stripper unit is suitable for use with exterior skin panels.

Use with triangular mounting plate, for punch ISO 8020 2664.02./2664.04.

Material:

Scraper bush: CuZn25Al5 (no. 2.0598)

Scraper plate: 40CrMnMoS8-6 (no. 1.2312)

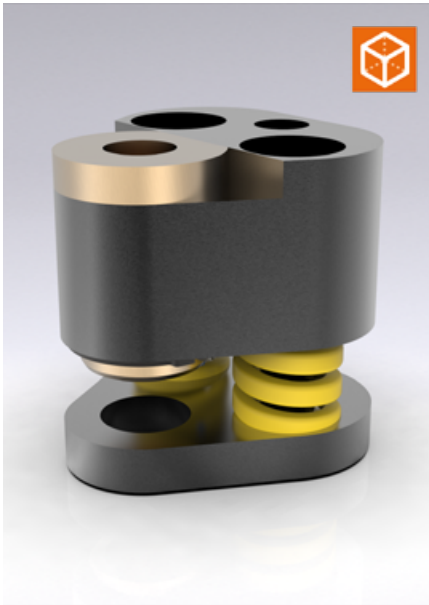
Pressure plate: 40CrMnMoS8-6 (no. 1.2312)

Note:

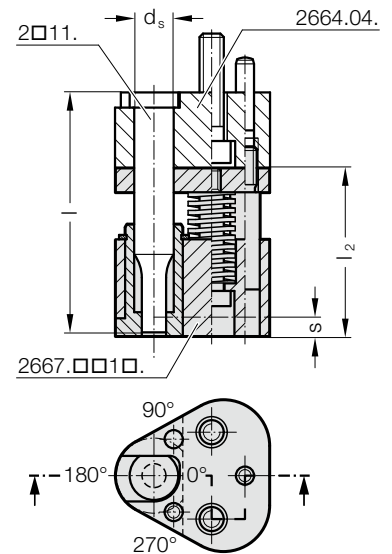
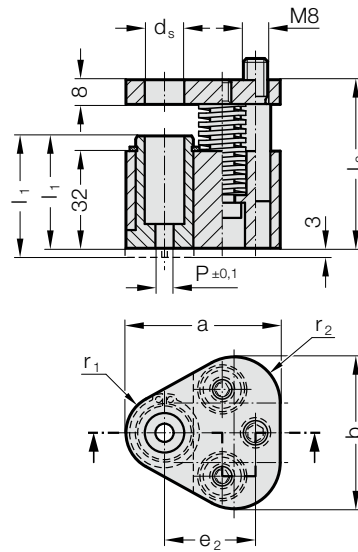
The stripper unit is available in 2 variants: Standard (A) and Long (B).

Long variant of the stripper unit with 3 mm projecting edge suitable for retrofitting a contour.

POLY STRIP STRIPPER UNIT, ROUND, FOR ISO 8020 PUNCH



2667.□□1□.



2667.xx1x. POLY STRIP stripper unit, round, for ISO 8020 punch

d _s / (Order Code character)	P	a	b	e ₂	r ₁	r ₂	l / (Order Code character)	80 (A)	90 (B)	100 (C)	l ₁ / (Order Code character)	37 (A)	40 (B)
							l ₂	55.5	65.5	75.5	s _(max)	6.5	9.5
10 / (F)	4 - 9,9	44.5	43.7	26.925	9.5	12		●	●	●		●	●
13 / (G)	5 - 12,9	50.8	50	29.97	12.7	15.2		●	●	●		●	●
16 / (H)	8 - 15,9	54	53.2	31.75	14.3	16.8		●	●	●		●	●
20 / (J)	12 9,9	60.3	59.5	33.53	17.5	20		●	●	●		●	●
25 / (K)	16,5 4,9	69.9	69.1	40.64	22.2	24.7		●	●	●		●	●
32 / (L)	20 1,9	69.9	69.1	40.64	22.2	24.7		●	●	●		●	●

d _s / (Order Code character)	Punch length l	80	80	90	90	100	100
	Scraper bush l ₁	37	40	37	40	37	40
	Stripping force, max [N]	1022	884	1280	810	786	1098
10 / (F)		1022	884	1280	810	786	1098
13 / (G)		1022	884	1280	810	786	1098
16 / (H)		2856	1668	3128	1282	1920	2688
20 / (J)		5049	2714	5124	2180	3120	4368
25 / (K)		5049	2714	5124	2180	3120	4368
32 / (L)		5049	2714	5124	2180	3120	4368

Description:

The stripper unit is suitable for use with exterior skin panels.

Use with triangular mounting plate, for punch ISO 8020 2664.02./2664.04.

Material:

Scraper bush: CuZn25Al5 (no. 2.0598)

Scraper plate: 40CrMnMoS8-6 (no. 1.2312)

Pressure plate: 40CrMnMoS8-6 (no. 1.2312)

Note:

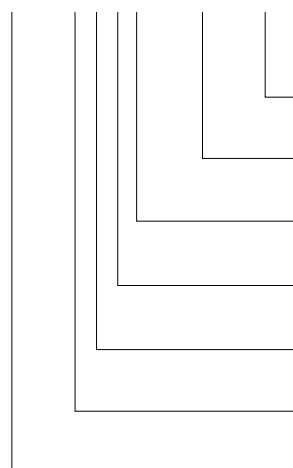
The stripper unit is available in 2 variants: Standard (A) and Long (B).

Long variant of the stripper unit with 3 mm projecting edge suitable for retrofitting a contour.

Choose the position of the cutting form in the scraper bush in accordance with the position of the installed punch in the mounting plate.

Ordering Code (example):

2667.FC1A.0400.A



Cutting form position:

0°

Shape: round

P = ø4,0 mm

Scraper bush length: l₁

Standard

Cutting form:

round

Punch type/length: l

ISO / l = 100 mm

Punch diameter: d₁

d₁ = 10 mm

Stripper unit POLY STRIP

Order Code character

= (A)

= 0400

Order Code character

= (A)

Order No

= (1)

Order Code character

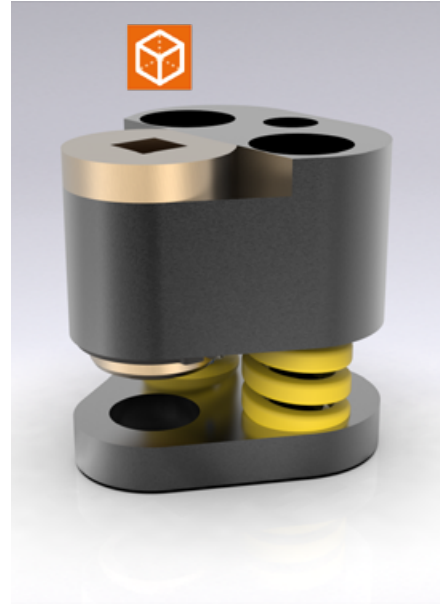
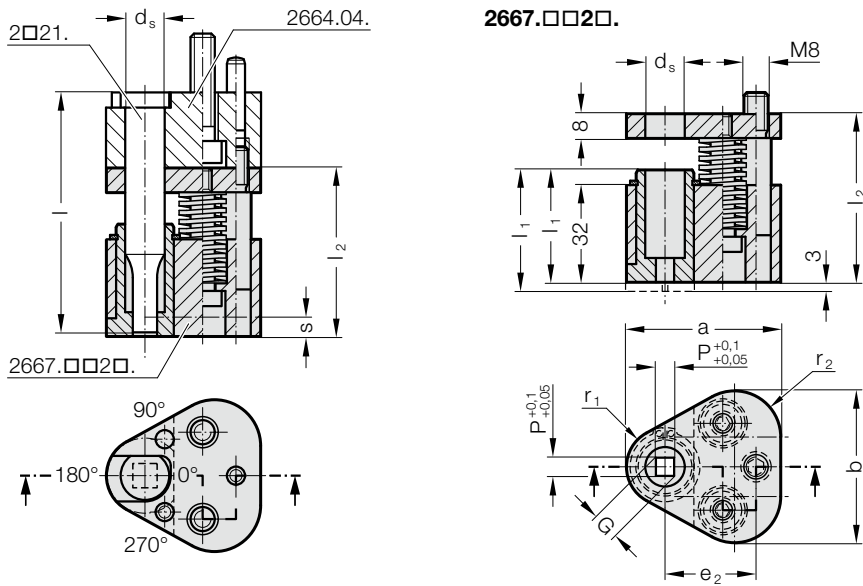
= (C)

Order Code character

= (F)

= 2667

POLY STRIP STRIPPER UNIT, SQUARE, FOR ISO 8020 PUNCH



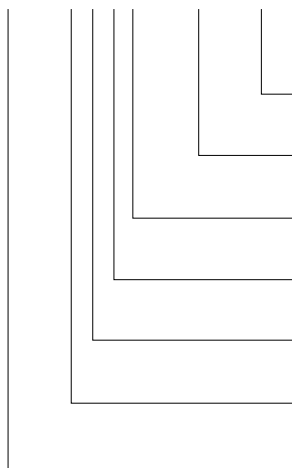
2667.xx2x. POLY STRIP stripper unit, square, for ISO 8020 punch

d_s / (Order Code character)	P_{min}	G_{max}	a	b	e_2	r_1	r_2	l (Order Code character)	80 (A)	90 (B)	100 (C)	l_1 (Order Code character)	37 (A)	40 (B)
								l_2	55.5	65.5	75.5	$S_{(max)}$	6.5	9.5
10 / (F)	3.5	9.9	44.5	43.7	26.925	9.5	12		●	●	●		●	●
13 / (G)	4.5	12.9	50.8	50	29.97	12.7	15.2		●	●	●		●	●
16 / (H)	6	15.9	54	53.2	31.75	14.3	16.8		●	●	●		●	●
20 / (J)	8	19.9	60.3	59.5	33.53	17.5	20		●	●	●		●	●
25 / (K)	10	24.9	69.9	69.1	40.64	22.2	24.7		●	●	●		●	●
32 / (L)	10	31.9	69.9	69.1	40.64	22.2	24.7		●	●	●		●	●

d_s / (Order Code character)	Punch length l	80	80	90	90	100	100
	Scraper bush l_1	37	40	37	40	37	40
	Stripping force, max [N]	1022	884	1280	810	786	1098
10 / (F)		1022	884	1280	810	786	1098
13 / (G)		1022	884	1280	810	786	1098
16 / (H)		2856	1668	3128	1282	1920	2688
20 / (J)		5049	2714	5124	2180	3120	4368
25 / (K)		5049	2714	5124	2180	3120	4368
32 / (L)		5049	2714	5124	2180	3120	4368

Ordering Code (example):

2667.FB2A.0400.A



Cutting form position:

0°

Form: Square length P

P = 4,0 mm

Scraper bush length: l_1

Standard

Cutting form:

square

Punch type/length: l

ISO / l = 90 mm

Punch diameter: d_1

d_1 = 10 mm

Stripper unit POLY STRIP

Order Code character

= (A)

= 0400

Order Code character

= (A)

Order No

= (2)

Order Code character

= (B)

Order Code character

= (F)

= 2667

Description:

The stripper unit is suitable for use with exterior skin panels.

Use with triangular mounting plate, for punch ISO 8020 2664.04.

Material:

Scraper bush: CuZn25Al5 (no. 2.0598)

Scraper plate: 40CrMnMoS8-6 (no. 1.2312)

Pressure plate: 40CrMnMoS8-6 (no. 1.2312)

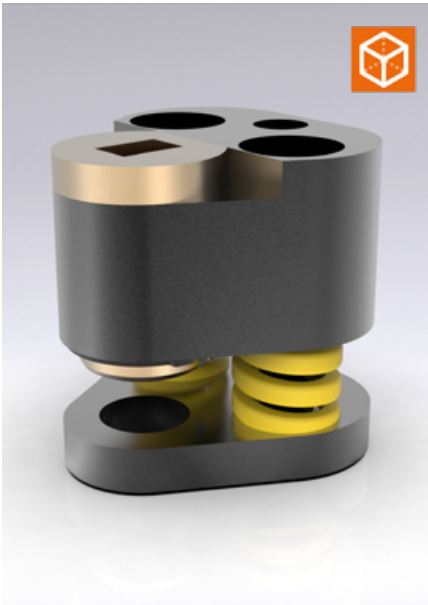
Note:

The stripper unit is available in 2 variants: Standard (A) and Long (B).

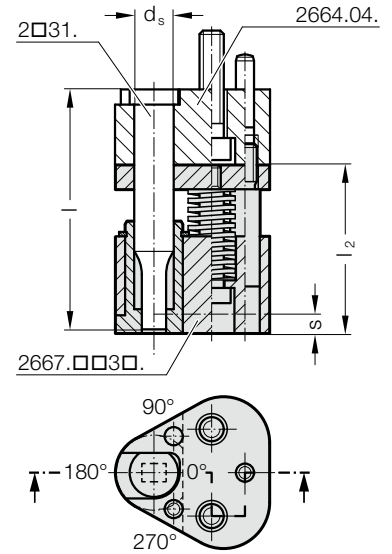
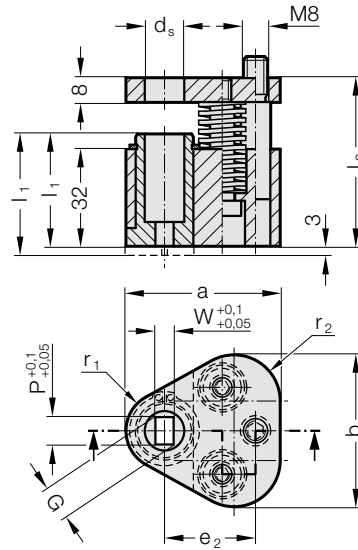
Long variant of the stripper unit with 3 mm projecting edge suitable for retrofitting a contour.

Choose the position of the cutting form in the scraper bush in accordance with the position of the installed punch in the mounting plate.

POLY STRIP STRIPPER UNIT, RECTANGLE, FOR ISO 8020 PUNCH



2667.□□3□.



2667.xx3x. POLY STRIP stripper unit, rectangle, for ISO 8020 punch

d_s / (Order Code character)	W_{min}	G_{max}	a	b	e_2	r_1	r_2	l (Order Code character)	80 (A)	90 (B)	100 (C)	l_1 (Order Code character)	37 (A)	40 (B)
								l_2	55.5	65.5	75.5	$s_{(max)}$	6.5	9.5
10 / (F)	3.5	9.9	44.5	43.7	26.925	9.5	12		●	●	●		●	●
13 / (G)	4.5	12.9	50.8	50	29.97	12.7	15.2		●	●	●		●	●
16 / (H)	6	15.9	54	53.2	31.75	14.3	16.8		●	●	●		●	●
20 / (J)	8	19.9	60.3	59.5	33.53	17.5	20		●	●	●		●	●
25 / (K)	10	24.9	69.9	69.1	40.64	22.2	24.7		●	●	●		●	●
32 / (L)	10	31.9	69.9	69.1	40.64	22.2	24.7		●	●	●		●	●

d_s / (Order Code character)	Punch length l	80	80	90	90	100	100
	Scraper bush l_1	37	40	37	40	37	40
	Stripping force, max [N]	1022	884	1280	810	786	1098
10 / (F)		1022	884	1280	810	786	1098
13 / (G)		1022	884	1280	810	786	1098
16 / (H)		2856	1668	3128	1282	1920	2688
20 / (J)		5049	2714	5124	2180	3120	4368
25 / (K)		5049	2714	5124	2180	3120	4368
32 / (L)		5049	2714	5124	2180	3120	4368

Description:

The stripper unit is suitable for use with exterior skin panels.

Use with triangular mounting plate, for punch ISO 8020 2664.04.

Material:

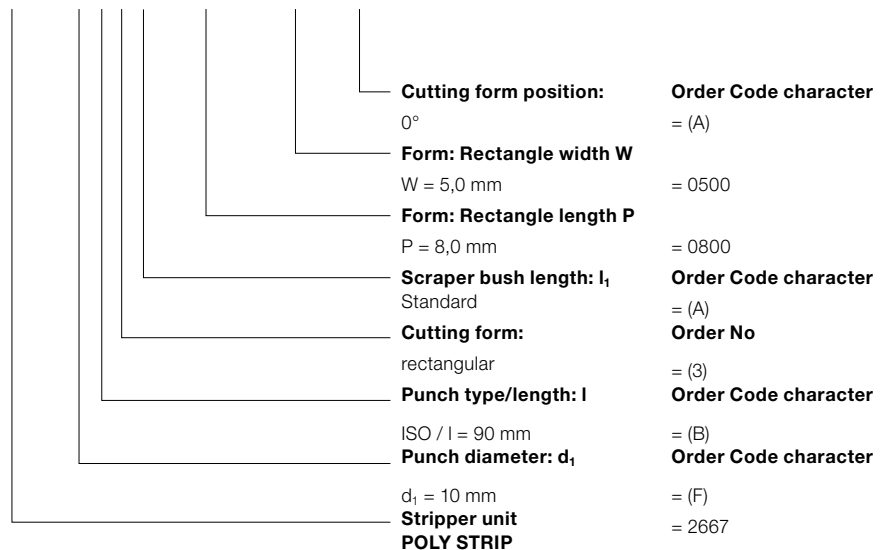
Scraper bush: CuZn25Al5 (no. 2.0598)
 Scraper plate: 40CrMnMoS8-6 (no. 1.2312)
 Pressure plate: 40CrMnMoS8-6 (no. 1.2312)

Note:

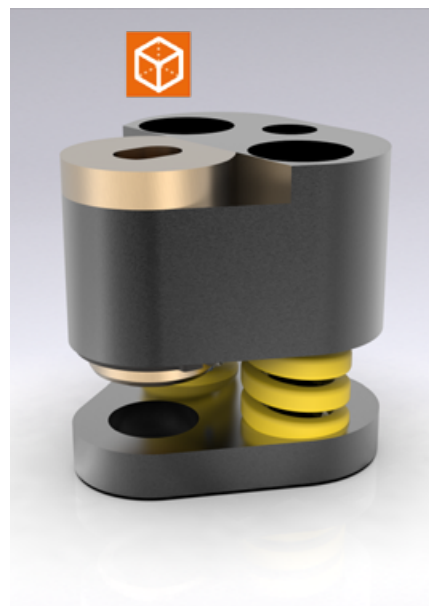
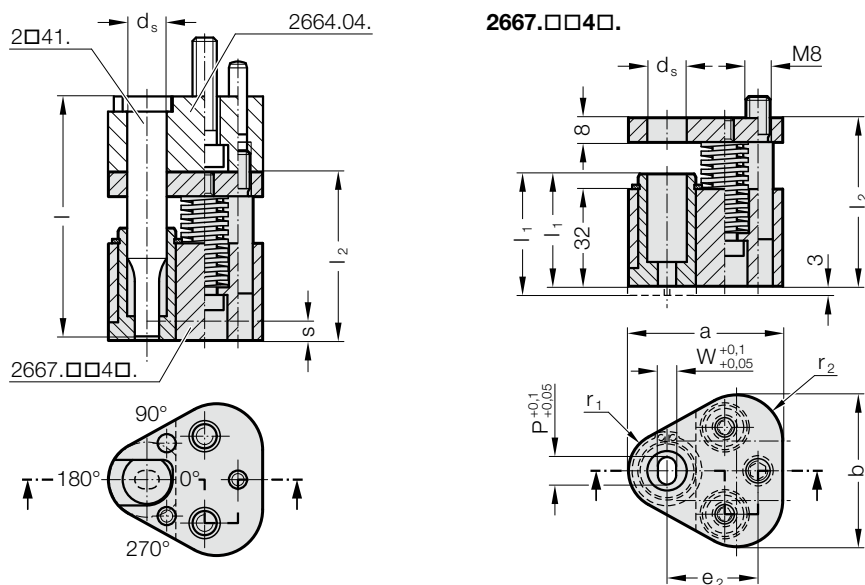
The stripper unit is available in 2 variants: Standard (A) and Long (B).
 Long variant of the stripper unit with 3 mm projecting edge suitable for retrofitting a contour.
 Choose the position of the cutting form in the scraper bush in accordance with the position of the installed punch in the mounting plate.

Ordering Code (example):

2667.FB3A.0800.0500.A



POLY STRIP STRIPPER UNIT, SLOT, FOR ISO 8020 PUNCH



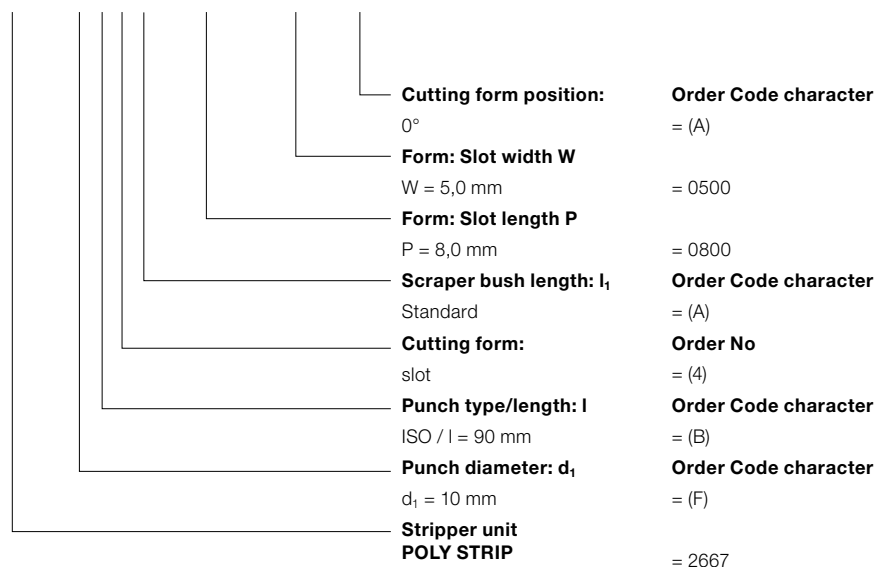
2667.xx4x. POLY STRIP stripper unit, slot, for ISO 8020 punch

d_s / (Order Code character)	W_{min}	G_{max}	a	b	e_2	r_1	r_2	l (Order Code character)	80 (A)	90 (B)	100 (C)	l_1 (Order Code character)	37 (A)	40 (B)
								l_2	55.5	65.5	75.5	$s_{(max)}$	6.5	9.5
10 / (F)	3.5	9.9	44.5	43.7	26.925	9.5	12		●	●	●		●	●
13 / (G)	4.5	12.9	50.8	50	29.97	12.7	15.2		●	●	●		●	●
16 / (H)	6	15.9	54	53.2	31.75	14.3	16.8		●	●	●		●	●
20 / (J)	8	19.9	60.3	59.5	33.53	17.5	20		●	●	●		●	●
25 / (K)	10	24.9	69.9	69.1	40.64	22.2	24.7		●	●	●		●	●
32 / (L)	10	31.9	69.9	69.1	40.64	22.2	24.7		●	●	●		●	●

d_s / (Order Code character)	Punch length l	80	80	90	90	100	100
	Scraper bush l_1	37	40	37	40	37	40
	Stripping force, max [N]	1022	884	1280	810	786	1098
10 / (F)		1022	884	1280	810	786	1098
13 / (G)		1022	884	1280	810	786	1098
16 / (H)		2856	1668	3128	1282	1920	2688
20 / (J)		5049	2714	5124	2180	3120	4368
25 / (K)		5049	2714	5124	2180	3120	4368
32 / (L)		5049	2714	5124	2180	3120	4368

Ordering Code (example):

2667.FB4A.0800.0500.A



Description:

The stripper unit is suitable for use with exterior skin panels. Use with triangular mounting plate, for punch ISO 8020 2664.04.

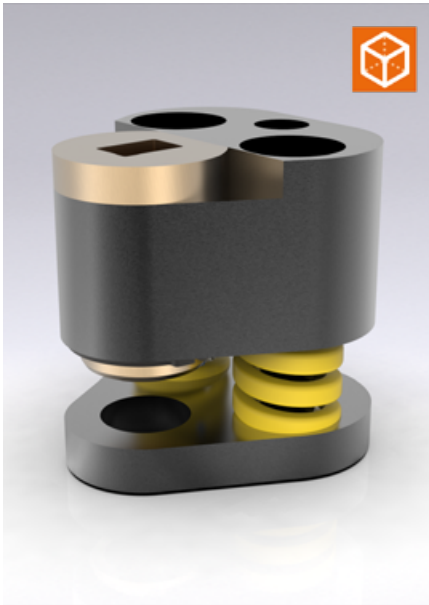
Material:

Scraper bush: CuZn25Al5 (no. 2.0598)
Scraper plate: 40CrMnMoS8-6 (no. 1.2312)
Pressure plate: 40CrMnMoS8-6 (no. 1.2312)

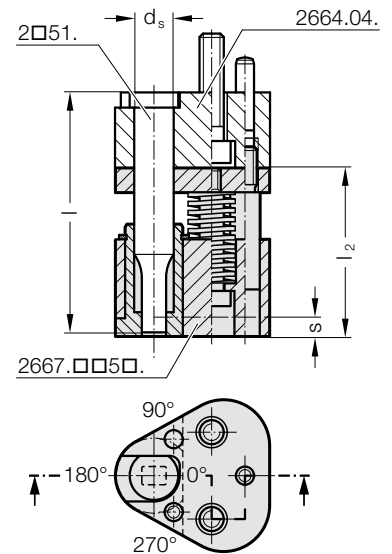
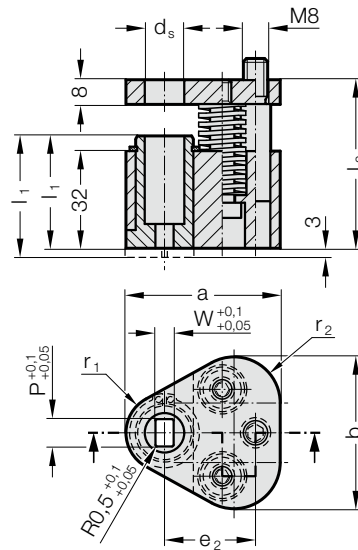
Note:

The stripper unit is available in 2 variants: Standard (A) and Long (B). Long variant of the stripper unit with 3 mm projecting edge suitable for retrofitting a contour. Choose the position of the cutting form in the scraper bush in accordance with the position of the installed punch in the mounting plate.

POLY STRIP STRIPPER UNIT, RECTANGLE WITH RADIUS, FOR ISO 8020 PUNCH



2667.□□5□.



2667.xx5x. POLY STRIP stripper unit, rectangle with radius, for ISO 8020 punch

d _s / (Order Code character)	W _{min}	G _{max}	a	b	e ₂	r ₁	r ₂	l ₁ (Order Code character)	80 (A)	90 (B)	100 (C)	l ₂ (Order Code character)	37 (A)	40 (B)
10 / (F)	3.5	9.9	44.5	43.7	26.925	9.5	12	S _(max)	55.5	65.5	75.5	S _(max)	6.5	9.5
13 / (G)	4.5	12.9	50.8	50	29.97	12.7	15.2		●	●	●		●	●
16 / (H)	6	15.9	54	53.2	31.75	14.3	16.8		●	●	●		●	●
20 / (J)	8	19.9	60.3	59.5	33.53	17.5	20		●	●	●		●	●
25 / (K)	10	24.9	69.9	69.1	40.64	22.2	24.7		●	●	●		●	●
32 / (L)	10	31.9	69.9	69.1	40.64	22.2	24.7		●	●	●		●	●

d _s / (Order Code character)	Punch length l	80	80	90	90	100	100
10 / (F)	Scraper bush l ₁	37	40	37	40	37	40
13 / (G)	Stripping force, max [N]	1022	884	1280	810	786	1098
16 / (H)		1022	884	1280	810	786	1098
20 / (J)		2856	1668	3128	1282	1920	2688
25 / (K)		5049	2714	5124	2180	3120	4368
32 / (L)		5049	2714	5124	2180	3120	4368

Description:

The stripper unit is suitable for use with exterior skin panels.

Use with triangular mounting plate, for punch ISO 8020 2664.04.

Material:

Scraper bush: CuZn25Al5 (no. 2.0598)

Scraper plate: 40CrMnMoS8-6 (no. 1.2312)

Pressure plate: 40CrMnMoS8-6 (no. 1.2312)

Note:

The stripper unit is available in 2 variants:

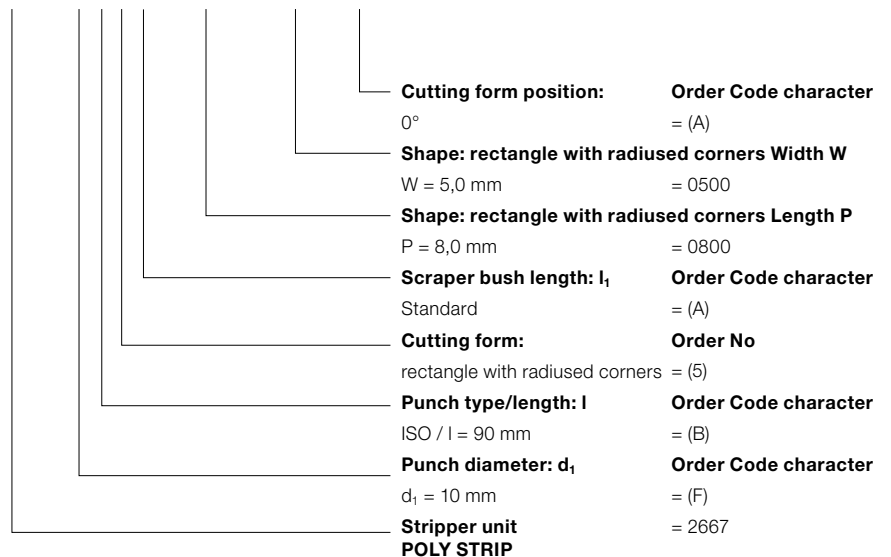
Standard (A) and Long (B).

Long variant of the stripper unit with 3 mm projecting edge suitable for retrofitting a contour.

Choose the position of the cutting form in the scraper bush in accordance with the position of the installed punch in the mounting plate.

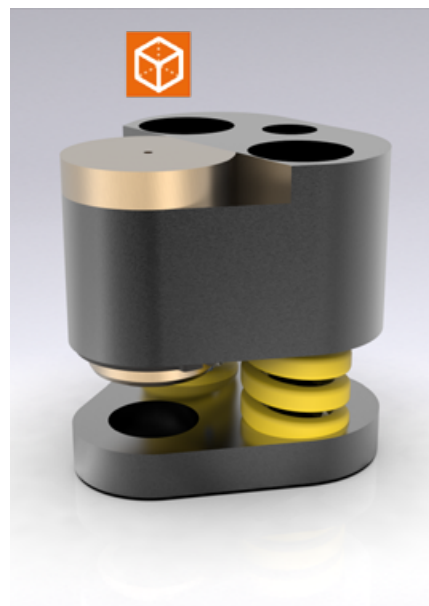
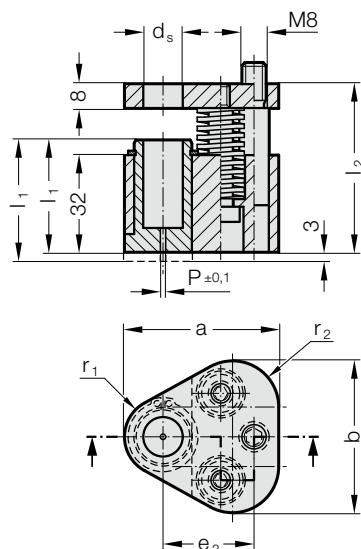
Ordering Code (example):

2667.FB5A.0800.0500.A



POLY STRIP STRIPPER UNIT, WITH START BOREHOLE, FOR BALL-LOCK PUNCH

2667.□□0□.



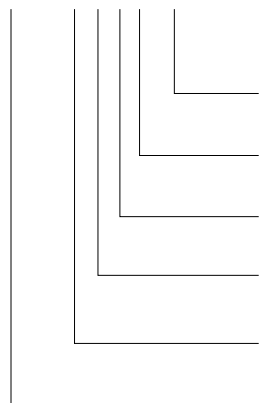
2667.xx0x. POLY STRIP stripper unit, with start borehole, for ball-lock punch

d _s / (Order Code character)	P	a	b	e ₂	r ₁	r ₂	Punch type					l ₁	37	40	
							l	SWL	SWL	SWS	SWL				SWS
							l ₂	(D)	(E)	(G)	(F)	(H)			
10 / (F)	1.5	44.5	43.7	26.925	9.5	12	55.5	80	90	90	100	100			
13 / (G)	1.5	50.8	50	29.97	12.7	15.2									
16 / (H)	1.5	54	53.2	31.75	14.3	16.8									
20 / (J)	1.5	60.3	59.5	33.53	17.5	20									
25 / (K)	1.5	69.9	69.1	40.64	22.2	24.7									
32 / (L)	1.5	69.9	69.1	40.64	22.2	24.7									
38 / (M)	1.5	77.4	76.6	43.99	26	28.5									
40 / (N)	1.5	77.4	76.6	43.99	26	28.5									

d _s / (Order Code character)	Punch type	Punch length l	Scraper bush l ₁	Stripping force, max [N]	SWL / SWS											
					080	080	090	090	100	100	090	090	100	100	090	090
10 / (F)				1022	884	1280	810	786	1098	1280	810	786	1098			
13 / (G)				1022	884	1280	810	786	1098	1280	810	786	1098			
16 / (H)				2856	1668	3128	1282	1920	2688	3128	1282	1920	2688			
20 / (J)				5049	2714	5124	2180	3120	4368	5124	2180	3120	4368			
25 / (K)				5049	2714	5124	2180	3120	4368	5124	2180	3120	4368			
32 / (L)				5049	2714	5124	2180	3120	4368	5124	2180	3120	4368			
38 / (M)				5049	2714	5124	2180	3120	4368							
40 / (N)										5124	2180	3120	4368			

Ordering Code (example):

2667.FE0A.A



Cutting form position:

0°

Scraper bush length: l₁

Standard

Cutting form:

Start borehole

Punch type/length: l

SWL / l = 90 mm

Punch diameter: d₁

d₁ = 10 mm

Stripper unit
POLY STRIP

Order Code character

= (A)

Order Code character

= (A)

Order No

= (0)

Order Code character

= (E)

Order Code character

= (F)

= 2667

Description:

The brush cleaner unit is suitable for use with exterior skin panels.

Use with triangular mounting plate, for ball-lock punch 2664.05./06./10.

Material:

Scraper bush: CuZn25Al5 (no. 2.0598)

Scraper plate: 40CrMnMoS8-6 (no. 1.2312)

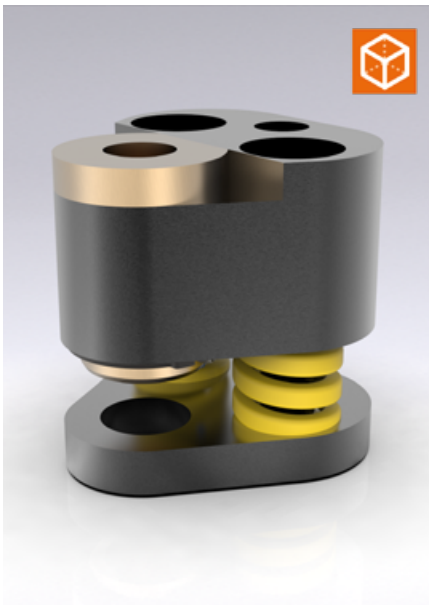
Pressure plate: 40CrMnMoS8-6 (no. 1.2312)

Note:

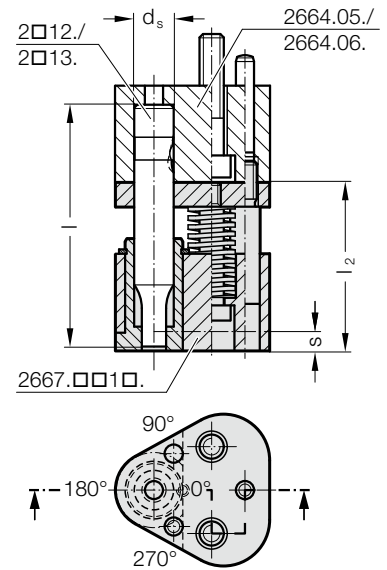
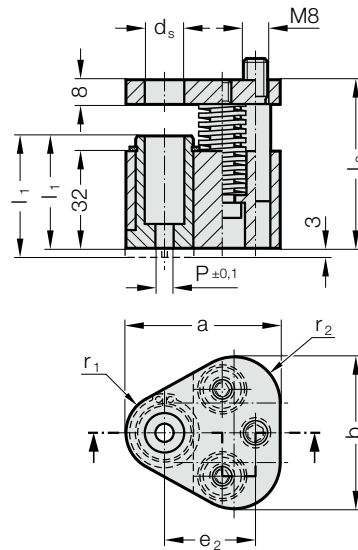
The stripper unit is available in 2 variants: Standard (A) and Long (B).

Long variant of the stripper unit with 3 mm projecting edge suitable for retrofitting a contour.

POLY STRIP STRIPPER UNIT, ROUND, FOR BALL-LOCK PUNCH



2667.□□1□.



2667.xx1x. POLY STRIP stripper unit, round, for ball-lock punch

d _s / (Order Code character)	P	a	b	e ₂	r ₁	r ₂	Punch type					l ₁ S _(max)	37 (A)	40 (B)	
							l	SWL (D)	SWL (E)	SWS (G)	SWL (F)				SWS (H)
10 / (F)	1,6 - 9,9	44.5	43.7	26.925	9.5	12	l ₂	55.5	65.5	65.5	75.5	75.5			
13 / (G)	5 - 12,9	50.8	50	29.97	12.7	15.2		●	●	●	●	●	●	●	●
16 / (H)	8 - 15,9	54	53.2	31.75	14.3	16.8		●	●	●	●	●	●	●	●
20 / (J)	12 - 19,9	60.3	59.5	33.53	17.5	20		●	●	●	●	●	●	●	●
25 / (K)	16 - 24,9	69.9	69.1	40.64	22.2	24.7		●	●	●	●	●	●	●	●
32 / (L)	24 - 31,9	69.9	69.1	40.64	22.2	24.7		●	●	●	●	●	●	●	●
38 / (M)	30	7,9	77.4	76	43.9	26	28.5	●	●		●			●	●
40 / (N)	30	9,9	77.4	76	43.9	26	28.5			●	●			●	●

d _s / (Order Code character)	Punch type	Punch length l	Scraper bush l ₁	Stripping force, max [N]	Punch type											
					080	080	090	090	100	100	100	090	090	100	100	
10 / (F)			37	1022	884	1280	810	786	1098	1280	810	786	1098			
13 / (G)			40	1022	884	1280	810	786	1098	1280	810	786	1098			
16 / (H)			37	2856	1668	3128	1282	1920	2688	3128	1282	1920	2688			
20 / (J)			40	5049	2714	5124	2180	3120	4368	5124	2180	3120	4368			
25 / (K)			40	5049	2714	5124	2180	3120	4368	5124	2180	3120	4368			
32 / (L)			40	5049	2714	5124	2180	3120	4368	5124	2180	3120	4368			
38 / (M)			40	5049	2714	5124	2180	3120	4368							
40 / (N)			40							5124	2180	3120	4368			

Description:

The brush cleaner unit is suitable for use with exterior skin panels.
Use with triangular mounting plate, for ball-lock punch 2664.05./06./10.

Material:

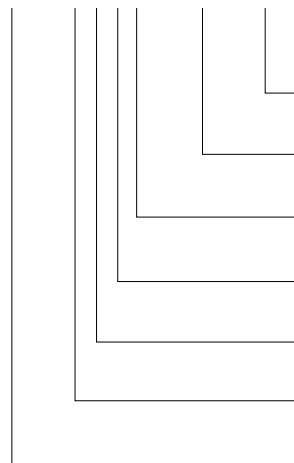
Scraper bush: CuZn25Al5 (no. 2.0598)
Scraper plate: 40CrMnMoS8-6 (no. 1.2312)
Pressure plate: 40CrMnMoS8-6 (no. 1.2312)

Note:

The stripper unit is available in 2 variants: Standard (A) and Long (B).
Long variant of the stripper unit with 3 mm projecting edge suitable for retrofitting a contour.
Choose the position of the cutting form in the scraper bush in accordance with the position of the installed punch in the mounting plate.

Ordering Code (example):

2667.FE1A.0400.A



Cutting form position:
0° = (A)

Shape: round P
P = ø4,0 mm = 0400

Scraper bush length: l₁
Standard = (A)

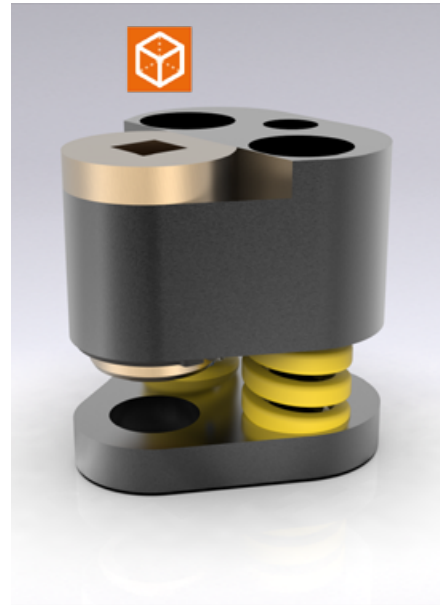
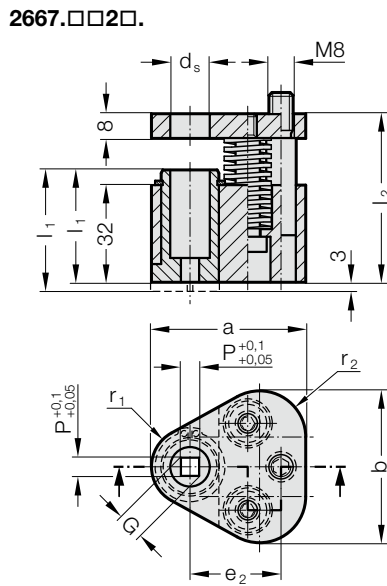
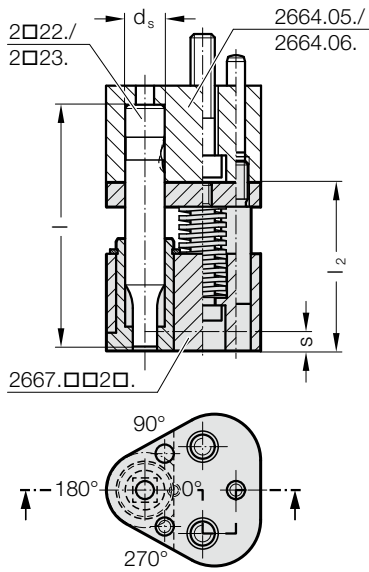
Cutting form:
round = (1)

Punch type/length: l
SWL / l = 90 mm = (E)

Punch diameter: d₁
d₁ = 10 mm = (F)

Stripper unit
POLY STRIP = 2667

POLY STRIP STRIPPER UNIT, SQUARE, FOR BALL-LOCK PUNCH



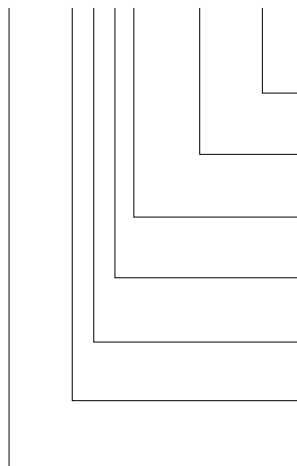
2667.xx2x. POLY STRIP stripper unit, square, for ball-lock punch

d _s / (Order Code character)	P _{min}	G _{max}	a	b	e ₂	r ₁	r ₂	Punch type l (Order Code character)	SWL	SWL	SWS	SWL	SWS	l ₁ (Order Code character)	37	40
									(D)	(E)	(G)	(F)	(H)		S _(max)	(A)
10 / (F)	1.6	9.9	44.5	43.7	26.925	9.5	12	l ₂	55.5	65.5	65.5	75.5	75.5		●	●
13 / (G)	4.5	12.9	50.8	50	29.97	12.7	15.2		●	●	●	●			●	●
16 / (H)	6	15.9	54	53.2	31.75	14.3	16.8		●	●	●	●			●	●
20 / (J)	8	19.9	60.3	59.5	33.53	17.5	20		●	●	●	●			●	●
25 / (K)	10	24.9	69.9	69.1	40.64	22.2	24.7		●	●	●	●			●	●
32 / (L)	12.5	31.9	69.9	69.1	40.64	22.2	24.7		●	●	●	●			●	●
38 / (M)	14	37.9	77.4	76	43.9	26	28.5		●	●	●	●			●	●
40 / (N)	14	39.9	77.4	76	43.9	26	28.5			●	●		●		●	●

d _s / (Order Code character)	Punch type Punch length l Scraper bush l ₁	Stripping force, max [N]	SWL	SWL	SWL	SWL	SWL	SWL	SWS	SWS	SWS	SWS
			080	080	090	090	100	100	090	090	100	100
10 / (F)	37	1022	884	1280	810	786	1098	1280	810	786	1098	1098
13 / (G)	40	1022	884	1280	810	786	1098	1280	810	786	1098	1098
16 / (H)	37	2856	1668	3128	1282	1920	2688	3128	1282	1920	2688	2688
20 / (J)	40	5049	2714	5124	2180	3120	4368	5124	2180	3120	4368	4368
25 / (K)	40	5049	2714	5124	2180	3120	4368	5124	2180	3120	4368	4368
32 / (L)	40	5049	2714	5124	2180	3120	4368	5124	2180	3120	4368	4368
38 / (M)	40	5049	2714	5124	2180	3120	4368	5124	2180	3120	4368	4368
40 / (N)	40								5124	2180	3120	4368

Ordering Code (example):

2667.FE2A.0400.A



Cutting form position: 0°	Order Code character = (A)
Form: Square length P P = 4,0 mm	= 0400
Scraper bush length: l₁ Standard	Order Code character = (A)
Cutting form: square	Order No = (2)
Punch type/length: l SWL / l = 90 mm	Order Code character = (E)
Punch diameter: d₁ d ₁ = 10 mm	Order Code character = (F)
Stripper unit POLY STRIP	= 2667

Description:

The brush cleaner unit is suitable for use with exterior skin panels.
Use with triangular mounting plate, for ball-lock punch 2664.05./06./10.

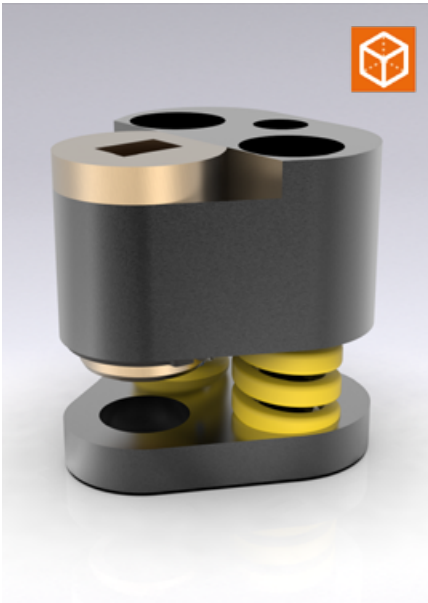
Material:

Scraper bush: CuZn25Al5 (no. 2.0598)
Scraper plate: 40CrMnMoS8-6 (no. 1.2312)
Pressure plate: 40CrMnMoS8-6 (no. 1.2312)

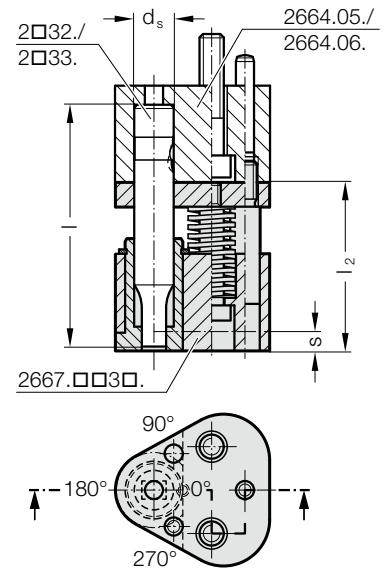
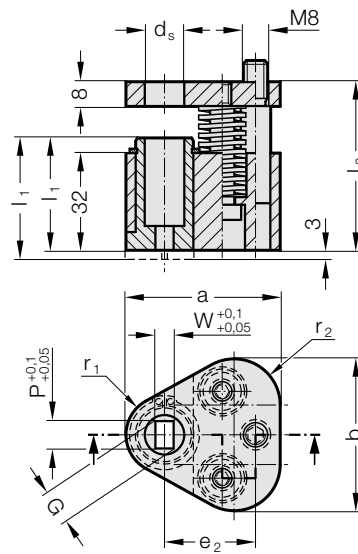
Note:

The stripper unit is available in 2 variants: Standard (A) and Long (B).
Long variant of the stripper unit with 3 mm projecting edge suitable for retrofitting a contour.
Choose the position of the cutting form in the scraper bush in accordance with the position of the installed punch in the mounting plate.

POLY STRIP STRIPPER UNIT, RECTANGLE, FOR BALL-LOCK PUNCH



2667.□□3□.



2667.xx3x. POLY STRIP stripper unit, rectangle, for ball-lock punch

d _s / (Order Code character)	W _{min}	G _{max}	a	b	e ₂	r ₁	r ₂	Punch type l (Order Code character)	SWL (D)	SWL (E)	SWS (G)	SWL (F)	SWS (H)	l ₁ (Order Code character)	37	40
															S _(max)	(A)
10 / (F)	1.6	9.9	44.5	43.7	26.925	9.5	12	l ₂	80	90	90	100	100		●	●
13 / (G)	4.5	12.9	50.8	50	29.97	12.7	15.2			●	●	●	●		●	●
16 / (H)	6	15.9	54	53.2	31.75	14.3	16.8			●	●	●	●		●	●
20 / (J)	8	19.9	60.3	59.5	33.53	17.5	20			●	●	●	●		●	●
25 / (K)	10	24.9	69.9	69.1	40.64	22.2	24.7			●	●	●	●		●	●
32 / (L)	12.5	31.9	69.9	69.1	40.64	22.2	24.7			●	●	●	●		●	●
38 / (M)	14	37.9	77.4	76	43.9	26	28.5		●	●	●	●			●	●
40 / (N)	14	39.9	77.4	76	43.9	26	28.5				●	●			●	●

d _s / (Order Code character)	Punch type Punch length l Scraper bush l ₁	SWL	SWL	SWL	SWL	SWL	SWL	SWS	SWS	SWS	SWS
		080	080	090	090	100	100	090	090	100	100
10 / (F)	Stripping force, max [N]	1022	884	1280	810	786	1098	1280	810	786	1098
13 / (G)		1022	884	1280	810	786	1098	1280	810	786	1098
16 / (H)		2856	1668	3128	1282	1920	2688	3128	1282	1920	2688
20 / (J)		5049	2714	5124	2180	3120	4368	5124	2180	3120	4368
25 / (K)		5049	2714	5124	2180	3120	4368	5124	2180	3120	4368
32 / (L)		5049	2714	5124	2180	3120	4368	5124	2180	3120	4368
38 / (M)		5049	2714	5124	2180	3120	4368				
40 / (N)								5124	2180	3120	4368

Description:

The brush cleaner unit is suitable for use with exterior skin panels.
Use with triangular mounting plate, for ball-lock punch 2664.05./06./10.

Material:

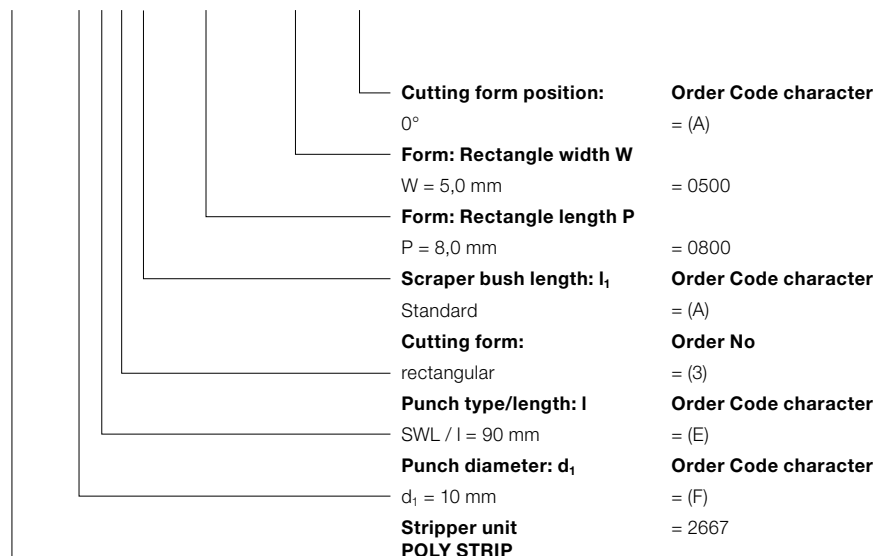
Scraper bush: CuZn25Al5 (no. 2.0598)
Scraper plate: 40CrMnMoS8-6 (no. 1.2312)
Pressure plate: 40CrMnMoS8-6 (no. 1.2312)

Note:

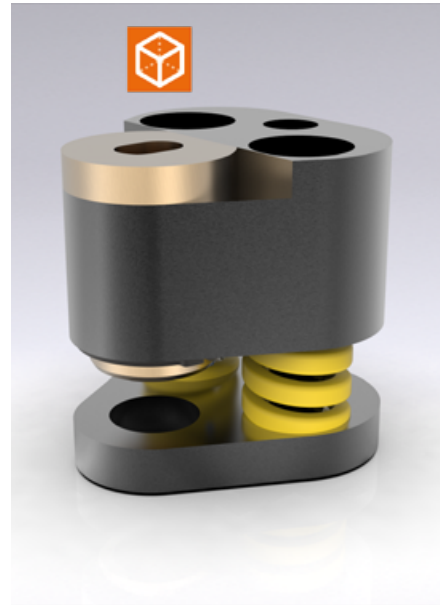
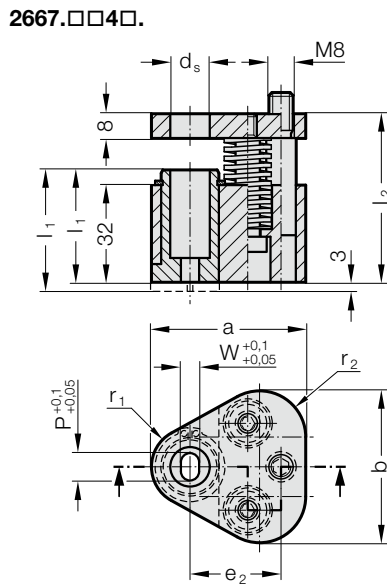
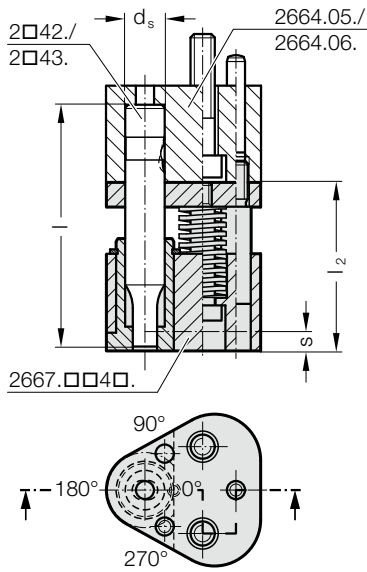
The stripper unit is available in 2 variants: Standard (A) and Long (B).
Long variant of the stripper unit with 3 mm projecting edge suitable for retrofitting a contour.
Choose the position of the cutting form in the scraper bush in accordance with the position of the installed punch in the mounting plate.

Ordering Code (example):

2667.FE3A.0800.0500.A



POLY STRIP STRIPPER UNIT, SLOT, FOR BALL-LOCK PUNCH



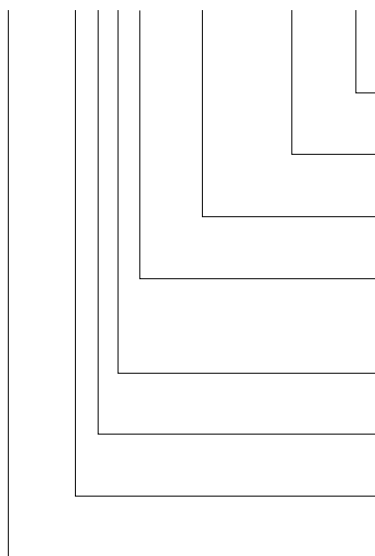
2667.xx4x. POLY STRIP stripper unit, slot, for ball-lock punch

d _s / (Order Code character)	W _{min}	G _{max}	a	b	e ₂	r ₁	r ₂	Punch type l (Order Code character)	SWL (D)	SWL (E)	SWS (G)	SWL (F)	SWS (H)	l ₁ S _(max)	37 40		
															(A)	(B)	
10 / (F)	1.6	9.9	44.5	43.7	26.925	9.5	12	l ₂	55.5	65.5	65.5	75.5	75.5			●	●
13 / (G)	4.5	12.9	50.8	50	29.97	12.7	15.2			●	●	●	●			●	●
16 / (H)	6	15.9	54	53.2	31.75	14.3	16.8			●	●	●	●			●	●
20 / (J)	8	19.9	60.3	59.5	33.53	17.5	20			●	●	●	●			●	●
25 / (K)	10	24.9	69.9	69.1	40.64	22.2	24.7			●	●	●	●			●	●
32 / (L)	12.5	31.9	69.9	69.1	40.64	22.2	24.7			●	●	●	●			●	●
38 / (M)	14	37.9	77.4	76	43.9	26	28.5		●	●		●				●	●
40 / (N)	14	39.9	77.4	76	43.9	26	28.5				●		●			●	●

d _s / (Order Code character)	Punch type Punch length l Scraper bush l ₁	Stripping force, max [N]	SWL	SWL	SWL	SWL	SWL	SWL	SWS	SWS	SWS	SWS
			080	080	090	090	100	100	090	090	100	100
10 / (F)		1022	884	1280	810	786	1098	1280	810	786	1098	
13 / (G)		1022	884	1280	810	786	1098	1280	810	786	1098	
16 / (H)		2856	1668	3128	1282	1920	2688	3128	1282	1920	2688	
20 / (J)		5049	2714	5124	2180	3120	4368	5124	2180	3120	4368	
25 / (K)		5049	2714	5124	2180	3120	4368	5124	2180	3120	4368	
32 / (L)		5049	2714	5124	2180	3120	4368	5124	2180	3120	4368	
38 / (M)		5049	2714	5124	2180	3120	4368					
40 / (N)									5124	2180	3120	4368

Ordering Code (example):

2667.FE4A.0800.0500.A



- Cutting form position:** 0° **Order Code character** = (A)
- Form: Slot width W** W = 5,0 mm **Order Code character** = 0500
- Form: Slot length P** P = 8,0 mm **Order Code character** = 0800
- Scraper bush length: l₁** Standard **Order Code character** = (A)
- Cutting form:** slot **Order No** = (4)
- Punch type/length: l** SWL / l = 90 mm **Order Code character** = (E)
- Punch diameter: d₁** d₁ = 10 mm **Order Code character** = (F)
- Stripper unit** POLY STRIP **Order Code character** = 2667

Description:

The brush cleaner unit is suitable for use with exterior skin panels. Use with triangular mounting plate, for ball-lock punch 2664.05./06./10.

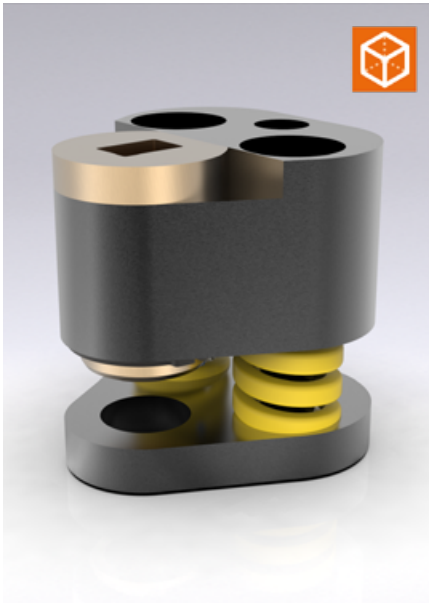
Material:

Scraper bush: CuZn25Al5 (no. 2.0598)
Scraper plate: 40CrMnMoS8-6 (no. 1.2312)
Pressure plate: 40CrMnMoS8-6 (no. 1.2312)

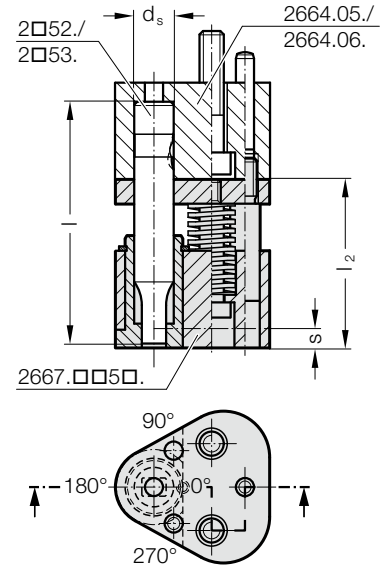
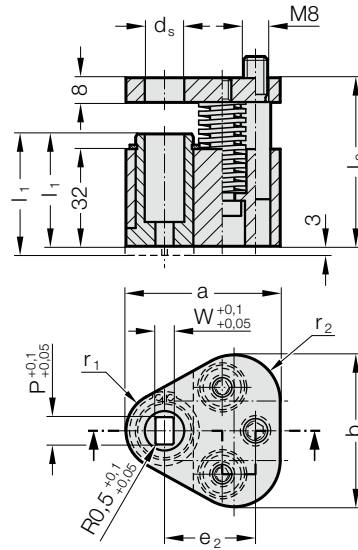
Note:

The stripper unit is available in 2 variants: Standard (A) and Long (B). Long variant of the stripper unit with 3 mm projecting edge suitable for retrofitting a contour. Choose the position of the cutting form in the scraper bush in accordance with the position of the installed punch in the mounting plate.

POLY STRIP STRIPPER UNIT, SQUARE WITH RADIUS, FOR BALL-LOCK PUNCH



2667.□□5□.



2667.xx5x. POLY STRIP stripper unit, square with radius, for ball-lock punch

d _s / (Order Code character)	W _{min}	G _{max}	a	b	e ₂	r ₁	r ₂	Punch type l (Order Code character)	SWL (D)	SWL (E)	SWS (G)	SWL (F)	SWS (H)	l ₁ (Order Code character)	37	40
															(A)	(B)
10 / (F)	1.6	9.9	44.5	43.7	26.925	9.5	12	l ₂	55.5	65.5	65.5	75.5	75.5	S _(max)	6.5	9.5
13 / (G)	4.5	12.9	50.8	50	29.97	12.7	15.2									
16 / (H)	6	15.9	54	53.2	31.75	14.3	16.8									
20 / (J)	8	19.9	60.3	59.5	33.53	17.5	20									
25 / (K)	10	24.9	69.9	69.1	40.64	22.2	24.7									
32 / (L)	12.5	31.9	69.9	69.1	40.64	22.2	24.7									
38 / (M)	14	37.9	77.4	76	43.9	26	28.5									
40 / (N)	14	39.9	77.4	76	43.9	26	28.5									

d _s / (Order Code character)	Punch type Punch length l Scraper bush l ₁	SWL 080	SWL 080	SWL 090	SWL 090	SWL 100	SWL 100	SWS 090	SWS 090	SWS 100	SWS 100
10 / (F)	Stripping force, max [N]	1022	884	1280	810	786	1098	1280	810	786	1098
13 / (G)		1022	884	1280	810	786	1098	1280	810	786	1098
16 / (H)		2856	1668	3128	1282	1920	2688	3128	1282	1920	2688
20 / (J)		5049	2714	5124	2180	3120	4368	5124	2180	3120	4368
25 / (K)		5049	2714	5124	2180	3120	4368	5124	2180	3120	4368
32 / (L)		5049	2714	5124	2180	3120	4368	5124	2180	3120	4368
38 / (M)		5049	2714	5124	2180	3120	4368				
40 / (N)								5124	2180	3120	4368

Description:

The brush cleaner unit is suitable for use with exterior skin panels.
Use with triangular mounting plate, for ball-lock punch 2664.05./06./10.

Material:

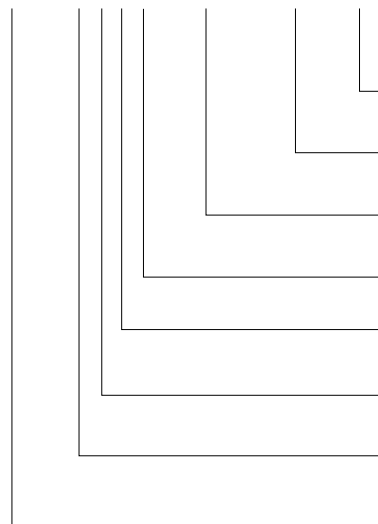
Scraper bush: CuZn25Al5 (no. 2.0598)
Scraper plate: 40CrMnMoS8-6 (no. 1.2312)
Pressure plate: 40CrMnMoS8-6 (no. 1.2312)

Note:

The stripper unit is available in 2 variants:
Standard (A) and Long (B).
Long variant of the stripper unit with 3 mm projecting edge suitable for retrofitting a contour.
Choose the position of the cutting form in the scraper bush in accordance with the position of the installed punch in the mounting plate.

Ordering Code (example):

2667.FE5A.0800.0500.A



Cutting form position:	Order Code character
0°	= (A)
Shape: rectangle with radiused corners Width W	
W = 5,0 mm	= 0500
Shape: rectangle with radiused corners Length P	
P = 8,0 mm	= 0800
Scraper bush length: l ₁	Order Code character
Standard	= (A)
Cutting form:	Order No
rectangle with radiused corners	= (5)
Punch type/length: l	Order Code character
SWL / l = 90 mm	= (E)
Punch diameter: d ₁	Order Code character
d ₁ = 10 mm	= (F)
Stripper unit	= 2667
POLY STRIP	