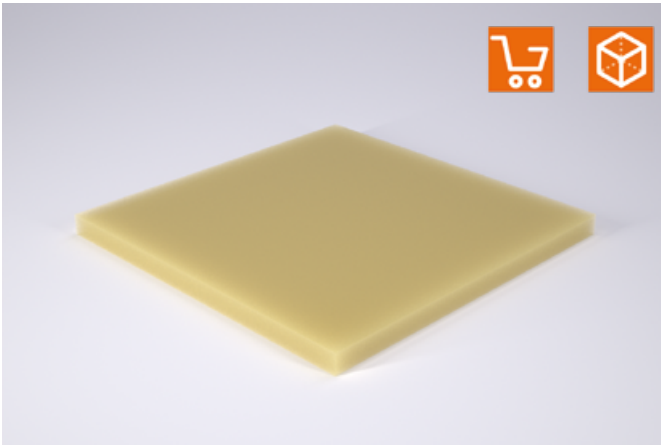
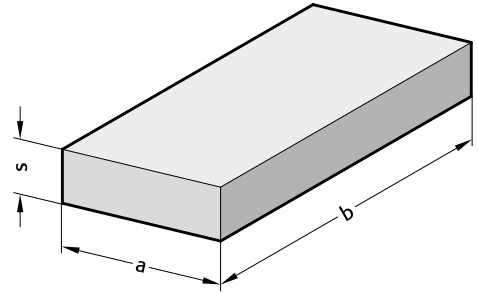


FIBROELAST®-PLATE



2511.3.



Material:

Polyester-based polyurethane
Hardness 65 Shore A

Colour:

white

Note:

Other plate thicknesses available upon request.

Physical properties:

Shore hardness A: 65
100% modulus of elasticity: 2,4 [N/mm²]
300% modulus of elasticity: 4,6 [N/mm²]
Tensile strength: 26 [N/mm²]
Elongation: 550 [%]
Tear resistance: 46 [kN/m]

Permanent set (70°C): 45 [%]
Rebound elasticity: 58 [%]
Maximum deformation: 40 [%]

Ordering Code (example):

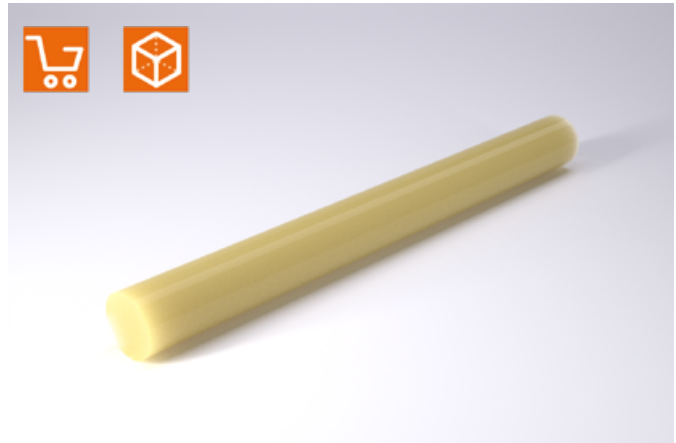
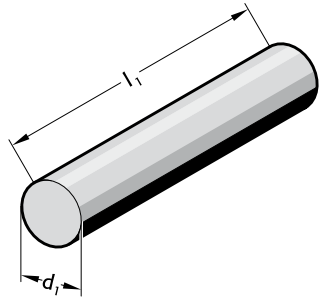
FIBROELAST®-Plate	=2511.3.
Thickness s	6 mm = 006.
Width a	500 mm = 0500.
Length b	500 mm = 0500.
Order No	=2511.3. 006. 0500. 0500

2511.3. FIBROELAST®-Plate

a	250	250	500	500
b	250	500	500	1,000
s				
1	●	●	●	●
2	●	●	●	●
3	●	●	●	●
4	●	●	●	●
5	●	●	●	●
6	●	●	●	●
7	●	●	●	●
8	●	●	●	●
10	●	●	●	●
12	●	●	●	●
15	●	●	●	●

FIBROELAST®-ROUND ROD

2531.4.



Material:

Polyester-based polyurethane
Hardness 70 Shore A

Colour:

white

Physical properties:

Shore hardness A: 70
100% modulus of elasticity: 3,0 [N/mm²]
300% modulus of elasticity: 6,0 [N/mm²]
Tensile strength: 28 [N/mm²]
Elongation: 500 [%]
Tear resistance: 58 [kN/m]
Permanent set (70°C): 45 [%]
Rebound elasticity: 55 [%]
Maximum deformation: 40 [%]

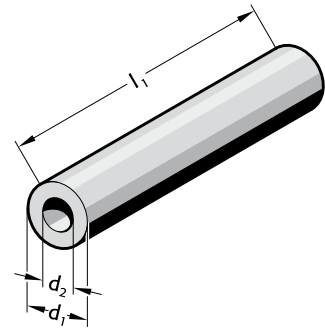
2531.4. FIBROELAST®-Round rod

Order No	d_1	l_1
2531.4.016	16	330
2531.4.020	20	500
2531.4.025	25	500
2531.4.032	32	500
2531.4.040	40	500
2531.4.050	50	500
2531.4.063	63	500
2531.4.080	80	500
2531.4.100	100	500
2531.4.125	125	500

FIBROELAST®-HOLLOW ROUND ROD



2541.4.



Material:

Polyester-based polyurethane
Hardness 70 Shore A

Colour:

white

Note:

FIBROELAST®-Hollow round rods can also be used as springs.

Physical properties:

Shore hardness A: 70
100% modulus of elasticity: 3,0 [N/mm²]
300% modulus of elasticity: 6,0 [N/mm²]
Tensile strength: 28 [N/mm²]
Elongation: 500 [%]
Tear resistance: 58 [kN/m]

Permanent set (70°C): 45 [%]
Rebound elasticity: 55 [%]
Maximum deformation: 40 [%]

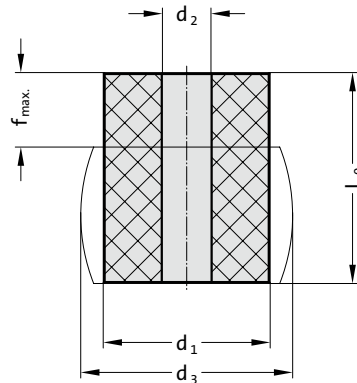
2541.4. FIBROELAST®-Hollow round rod

Order No	d ₁	d ₂	l ₁
2541.4.016	16	6.5	330
2541.4.020	20	8.5	500
2541.4.025	25	10.5	500
2541.4.032	32	13.5	500
2541.4.040	40	13.5	500
2541.4.050	50	17	500
2541.4.063	63	17	500
2541.4.080	80	21	500
2541.4.100	100	21	500
2541.4.125	125	27	500

FIBROELAST® TUBULAR SPRING ELEMENT 70 SHORE A



2461.4.



Material:

Polyester-based polyurethane 70 Shore A
Colour: white

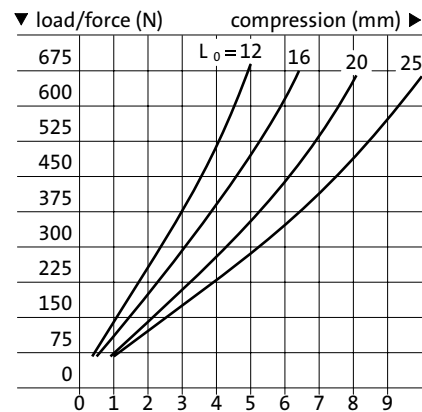
Note:

The physical properties of polyurethane elastomers means that they have a tendency to settle. The extent of such settlement is dependent on the internal heat of friction, speed and number of load changes, the spring travel and the Shore hardness. Settlement may be as much as 4 to 7% of the spring length L_0 .

2461.4. FIBROELAST® Tubular spring element 70 Shore A

Order No	d ₁	L ₀	d ₂	d ₃	f max.	Order No	d ₁	L ₀	d ₂	d ₃	f max.
2461.4.016.012	16	12	6.5	21	4.8	2461.4.063.100	63	100	17	81	40
2461.4.016.016	16	16	6.5	21	6.4	2461.4.063.125	63	125	17	81	50
2461.4.016.020	16	20	6.5	21	8	2461.4.080.032	80	32	21	104	12.8
2461.4.016.025	16	25	6.5	21	10	2461.4.080.040	80	40	21	104	16
2461.4.020.016	20	16	8.5	26	6.4	2461.4.080.050	80	50	21	104	20
2461.4.020.020	20	20	8.5	26	8	2461.4.080.063	80	63	21	104	25.2
2461.4.020.025	20	25	8.5	26	10	2461.4.080.080	80	80	21	104	32
2461.4.020.032	20	32	8.5	26	12.8	2461.4.080.100	80	100	21	104	40
2461.4.025.020	25	20	10.5	32	8	2461.4.080.125	80	125	21	104	50
2461.4.025.025	25	25	10.5	32	10	2461.4.100.032	100	32	21	130	12.8
2461.4.025.032	25	32	10.5	32	12.8	2461.4.100.040	100	40	21	130	16
2461.4.025.040	25	40	10.5	32	16	2461.4.100.050	100	50	21	130	20
2461.4.032.032	32	32	13.5	42	12.8	2461.4.100.063	100	63	21	130	25.2
2461.4.032.040	32	40	13.5	42	16	2461.4.100.080	100	80	21	130	32
2461.4.032.050	32	50	13.5	42	20	2461.4.100.100	100	100	21	130	40
2461.4.032.063	32	63	13.5	42	25.2	2461.4.100.125	100	125	21	130	50
2461.4.040.032	40	32	13.5	52	12.8	2461.4.125.032	125	32	27	160	12.8
2461.4.040.040	40	40	13.5	52	16	2461.4.125.040	125	40	27	160	16
2461.4.040.050	40	50	13.5	52	20	2461.4.125.050	125	50	27	160	20
2461.4.040.063	40	63	13.5	52	25.2	2461.4.125.063	125	63	27	160	25.2
2461.4.040.080	40	80	13.5	52	32	2461.4.125.080	125	80	27	160	32
2461.4.050.032	50	32	17	65	12.8	2461.4.125.100	125	100	27	160	40
2461.4.050.040	50	40	17	65	16	2461.4.125.125	125	125	27	160	50
2461.4.050.050	50	50	17	65	20	2461.4.125.160	125	160	27	160	64
2461.4.050.063	50	63	17	65	25.2						
2461.4.050.080	50	80	17	65	32						
2461.4.050.100	50	100	17	65	40						
2461.4.063.032	63	32	17	81	12.8						
2461.4.063.040	63	40	17	81	16						
2461.4.063.050	63	50	17	81	20						
2461.4.063.063	63	63	17	81	25.2						
2461.4.063.080	63	80	17	81	32						

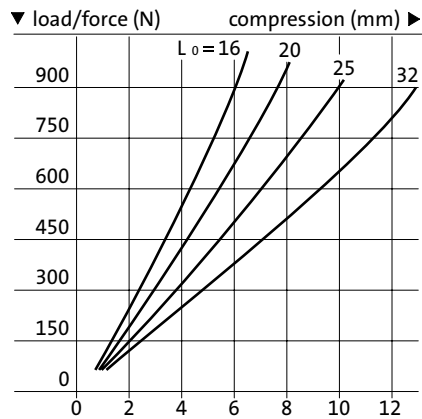
**2461.4.016.
Ø 16/70 Shore A**



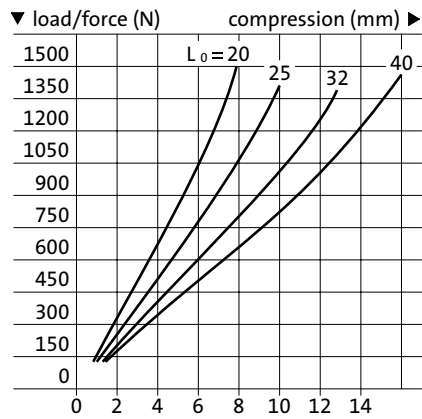


FIBROELAST® TUBULAR SPRING ELEMENT 70 SHORE A

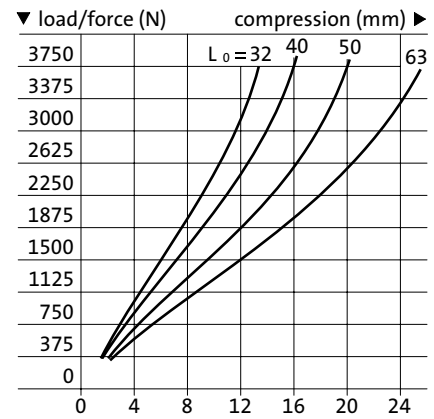
2461.4.020.
Ø 20/70 Shore A



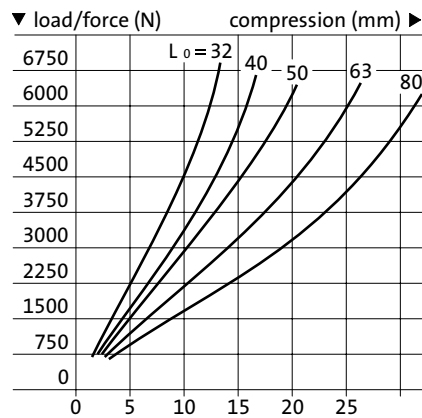
2461.4.025.
Ø 25/70 Shore A



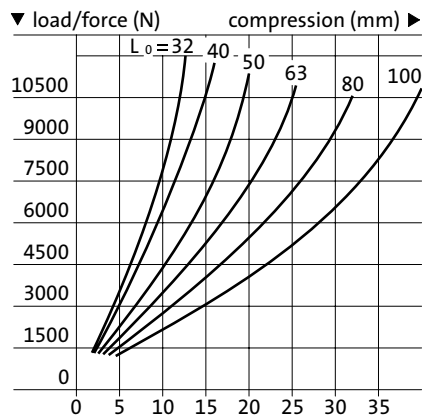
2461.4.032.
Ø 32/70 Shore A



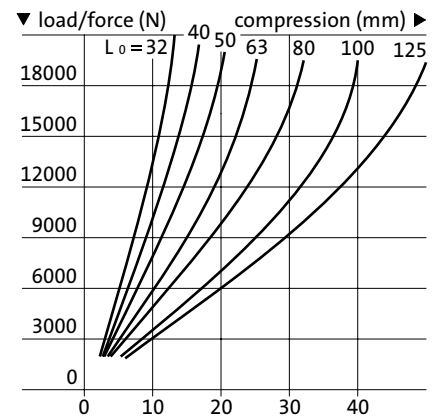
2461.4.040.
Ø 40/70 Shore A



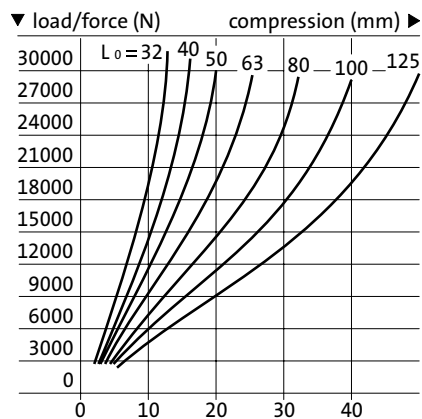
2461.4.050.
Ø 50/70 Shore A



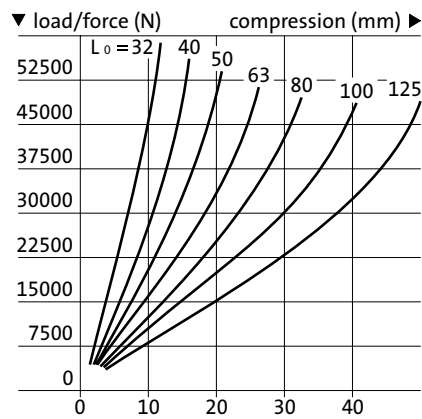
2461.4.063.
Ø 63/70 Shore A



2461.4.080.
Ø 80/70 Shore A



2461.4.100.
Ø 100/70 Shore A



2461.4.125.
Ø 125/70 Shore A

