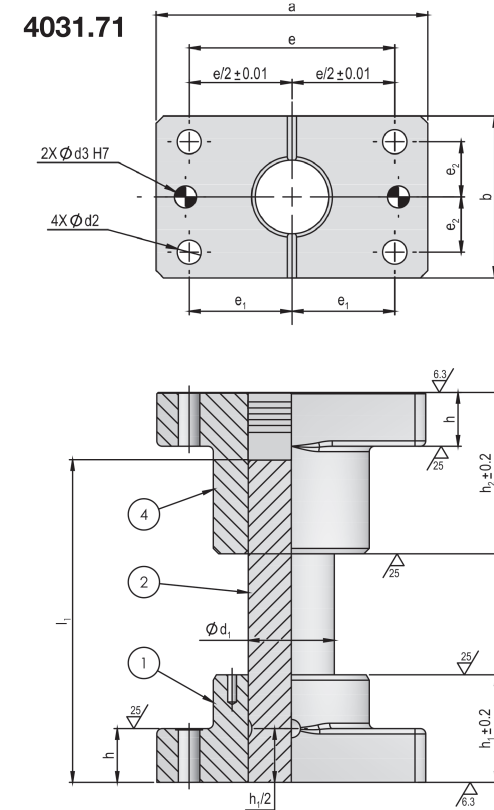


Oil Type Guide Post With Dowel Holes

4031.71



4031.71.

d1	25	32	38	50
d2	9	11	11	14
d3H7	8	8	10	10
a	84	100	130	155
b	48	58	75	90
e	66	76	100	125
e1	33	38	50	62.5
e2	15	18	22	30
h	20	20	25	25
h1	30	40	50	65
h2	45	50	60	85
Screw Size	M8 x 35	M10 x 40	M10 x 45	M12 x 50
Dowel Size	8 x 30	8 x 30	10 x 40	10 x 40

Execution :

Guide Post consisting of:

Guide Flange, Guide Pillar, Retaining Flange,
Hexagon Socket Head Cap Screws, DIN 912/ISO 4762,
Dowel Pins with Internal Extracting Thread ~ ISO 8735

Material :

Guide Bush :
Special Cast Iron with non liquid Lubricant

Guide Pillar :
Steel, surface hardened
Surface hardness: 60 + 3 HRC
Hardness penetration depth: 2 + 1.6 mm

Retaining Bush :
Special Cast Iron with Positive Locking

Note:
Perpendicularity of guide pillar with reference to retaining
flange is < 0.02/100 length.

Ordering Code (example) :

Oilless Guide Post = 4031.71.
d1 = 50 mm = 050.
l1 = 200 mm = 200
Order No = 4031.70.050.200

l1	80	•	•	•	•
	90	•	•	•	•
	100	•	•	•	•
	110	•	•	•	•
	120	•	•	•	•
	130	•	•	•	•
	140	•	•	•	•
	150	•	•	•	•
	160	•	•	•	•
	170	•	•	•	•
	180	•	•	•	•
	200	•	•	•	•
	220	•	•	•	•
	250	•	•	•	•
	280	•	•	•	•
	300	•	•	•	•
	350	•	•	•	•

FIBRO INDIA PRECISION PRODUCTS PRIVATE LIMITED

Head Office & Works:
FIBRO India Precision India Pvt Ltd
Plot No-A-55, Phase II, Chakan M.I.D.C.,
Tal - Khed, Pune - 410501, INDIA.
Phone: +91-2135-670-900
Email: info@fibro-india.com



THE LÄPPLER GROUP

LÄPPLER AUTOMOTIVE
FIBRO
FIBRO LÄPPLER TECHNOLOGY
LÄPPLER AUS- UND
WEITERBILDUNG

North & East Region

Sourabh Mittal
Area Manager – Business Development
Phone +91-8743 02 58 80
Email: sourabh@fibro-india.com

Harshit Dixit
Asst. Area Manager – Business Development
Phone: +91-8699 22 8140
Email: h.dixit@fibro-india.com

Jayendrasinh Parmar
Regional Manager – Business Development
Phone: +91-9998 76 61 93
Email: jayendra@fibro-india.com

West Region

Prasad Ambikar
Regional Manager – Business Development
Phone: +91-9922 94 08 31
Email: prasad.ambikar@fibro-india.com

Rohit Tiwari
Regional Manager- Business Development
Phone +91-9607 97 89 65
Email: r.tiwari@fibro-india.com

South Region

Anbalagan Shan
Regional Manager – Business Development
Phone: +91-7871 73 29 30
Email: anbalagan@fibro-india.com

Manjunatha T
Asst. Manager – Business Development
Phone: +91-9511 92 19 92
Email: manjunatha@fibro-india.com

Our Exclusive Channel Partners

VETO Clamping Systems Pvt Ltd
Plot no.- 7A,Kla No-5,Pali Road
Near Radha Swami Satsang, Sohna Road
Faridabad (HR)-121005
Phone: +91 9811 65 00 75
Email: info.vetoclamps@gmail.com

Legend Tool Tech
Ground Floor, Highway No -84, Surya City
Phase-1, AnekalChandapura Road, Chan-
dapura Bangalore Rural, Karnataka - 560099.
Phone: +91-9900 73 11 69
+91-8712 33 12 80
Email: legendtooltech@yahoo.com;
sales.blr@legend-group.in

Hydro Serve Systems
68A /2, SIDCOIndustrial Estate,
Ambattur, Chennai-600098.
Phone: +91-9884 48 89 01
Email: hydroserve-system@gmail.com

G M Precision
92 Mehar Singh Colony, Tripuri,
Patiala, Punjab 147004.
Phone: +91- 9914 96 79 65,
+91-7889 12 30 88
Email: info.gmprecision@gmail.com

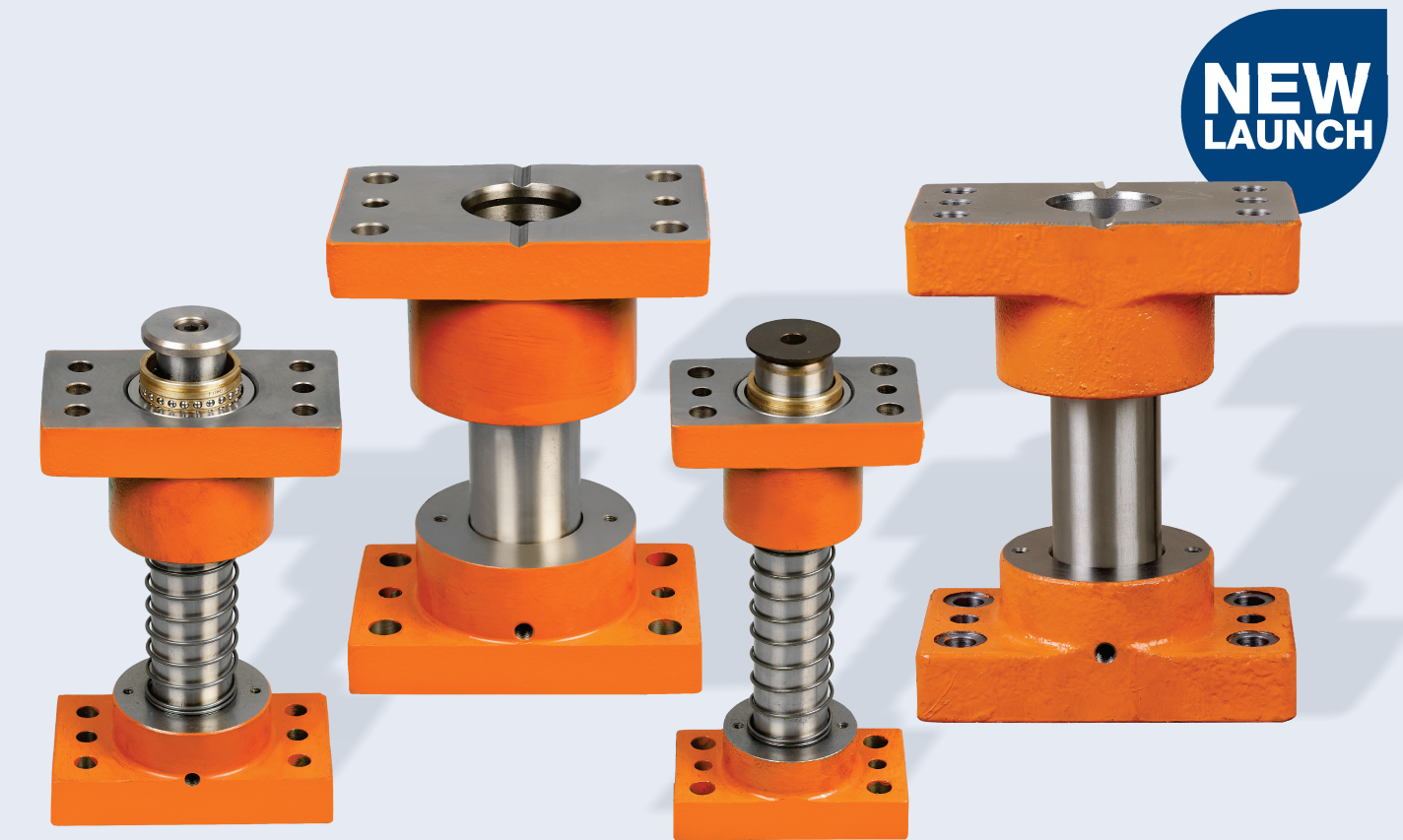
S. K Enterprise
H.No 403, Sidhawali Gurugram (HR) 122413
Phone: +91 7082376808
Phone: +91- 9466 28 65 10
Email: 007skenterprises@gmail.com

Saraswati Industrial Corporation
N-6, ShivalikNagarss
B.H.E.L., Ranipur, Haridwar
Uttarakhand-249403
Phone: +91- 9760 03 08 35
Email: saraswatiindcorp@gmail.com

Aura Engineering
#218-A2, 3rd Floor, Sathyamoorthy Road,
Opp.Tharakaram Silk House, Ram Nagar,
Coimbatore - 641009,Tamil Nadu.
Phone: +91 -8754 01 54 84,
+91 9787 87 67 39
Email: sales@auraengg.in

R and W Tooling Solutions Pvt Ltd
Shop No.3, Survey No. 594,
Chikhali, Pune Maharashtra 411027
Phone: +91 -8237 70 80 69
Email: dnyaneshwar.waman@randwtoolings.com

DESIGNED TO DELIVER EXCELLENCE
HIGH PERFORMANCE GUIDE POST SETS

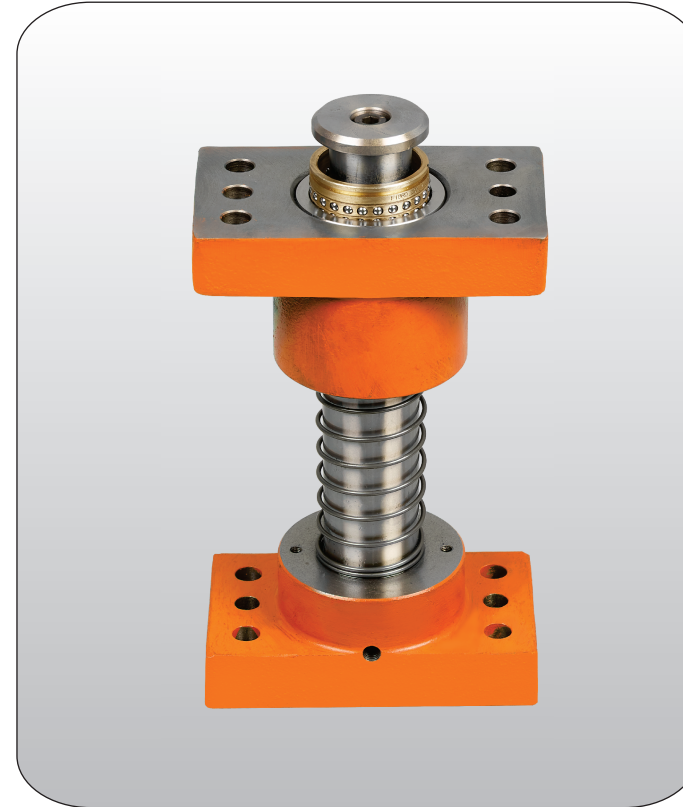
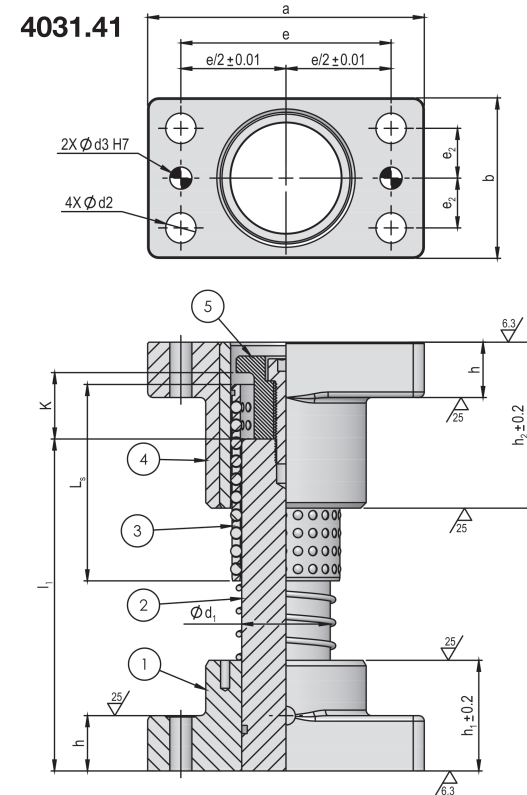


KPI
KNOW-HOW
PRECISION
INNOVATION +

#FIBROprovidesmore

Ball Guide Post Set with Fixed Retainer

4031.41



4031.41.

d1	25	32	38	50
d2	9	11	11	14
d3h7	8	8	10	10
a	84	100	130	155
b	48	58	75	90
e	66	76	100	125
e2	15	18	22	30
h	20	20	25	25
h1	30	40	50	65
h2	50	60	70	90
D	31	40	46	58
Ls	56	71	80	95
Screw size	8X35	10X40	10X45	12X50
Dowel size	8X30	8X30	10X40	10X40

I1				
120	•	•		
130	•	•		
140	•	•	•	
150	•	•	•	
160	•	•	•	
170	•	•	•	
180	•	•	•	•
200	•	•	•	•
220	•	•	•	•
240	•	•	•	•
260	•	•	•	•
300	•	•	•	•
350	•	•	•	•

Execution :

Ball Guide Post with Fixed Retainer consisting of :
Guide Flange, Guide Pillar, Retaining Flange, Ball Cage, Retainer, Hexagon Socket Head Cap Screws, DIN 912/ISO 4762, Dowel Pins with Internal Extracting Thread ~ ISO 8735, Spring

Material :

Guide Holder :
Special Cast Iron with hardened Steel Bush

Guide Pillar :
Steel, surface hardened
Surface hardness: 60 + 3 HRC
Hardness penetration depth: 2 + 1.6 mm

Retaining Bush :
Special Cast Iron with Positive Locking

Retainer :

Steel

Ball Cage :

Cage: Brass
Balls: Steel Hardened (DIN 5401)

Note:

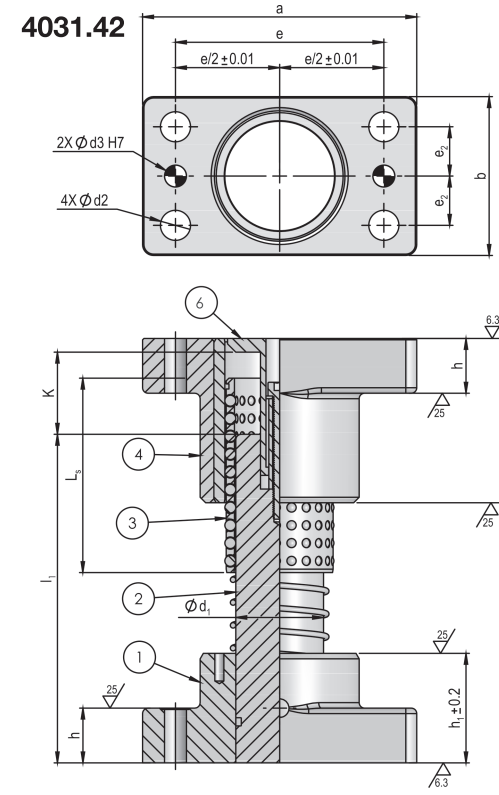
- 1.Perpendicularity of guide pillar with reference to retaining flange is $\leq 0.02/100$ length.
- 2.The preload on Ball Cage is as per FIBRO Standards
- 3.Individual Parts may not be interchangeable with other Standard Guide Posts

Ordering Code (example) :

Ball Guide Post with Fixed Retainer = 4031.41.
d1 = 32 mm = 032.
I1 = 120 mm = 120
Order No = 4031.41.032.120

Ball Guide Post Set with Floating Retainer

4031.42



4031.42.

d1	25	32	38	50
d2	9	11	11	14
d3h7	8	8	10	10
a	84	100	130	155
b	48	58	75	90
e	66	76	100	125
e1	33	38	50	62.5
e2	15	18	22	30
h	20	20	25	25
h1	30	40	50	65
h2	50	60	70	90
D	31	40	46	58
K	24	29	34	46
Ls	56	71	80	95
Screw size	8X35	10X40	10X45	12X50
Dowel size	8X30	8X30	10X40	10X40

I1				
120	•	•		
130	•	•		
140	•	•	•	
150	•	•	•	
160	•	•	•	
170	•	•	•	
180	•	•	•	•
200	•	•	•	•
220	•	•	•	•
240	•	•	•	•
260	•	•	•	•
300	•	•	•	•
350	•	•	•	•

Execution :

Ball Guide Post with Floating Retainer consisting of of :
Guide Flange, Guide Pillar, Retaining Flange, Ball Cage, Retainer, Spring, Hexagon Socket Head Cap Screws, DIN 912/ISO 4762, Dowel Pins with Internal Extracting Thread ~ ISO 8735

Material :

Guide Holder :
Special Cast Iron with hardened Steel Bush

Guide Pillar :
Steel, surface hardened
Surface hardness: 60 + 3 HRC
Hardness penetration depth: 2 + 1.6 mm

Retaining Bush :
Special Cast Iron with Positive Locking

Floating Retainer :

Plastic Retainer with Steel Sleeve and Screw

Ball Cage :

Cage: Brass
Balls: Steel Hardened (DIN 5401)

Note:

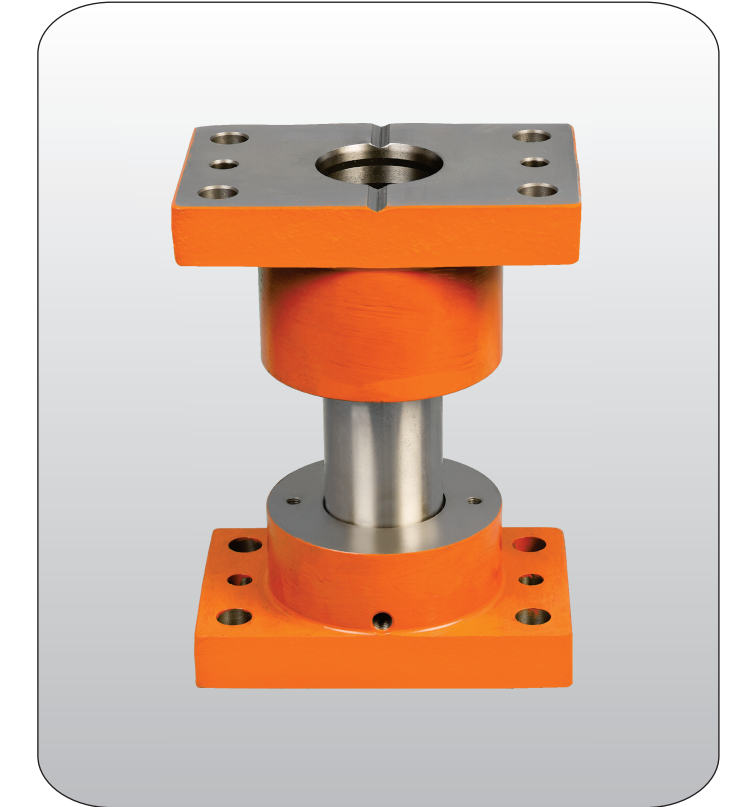
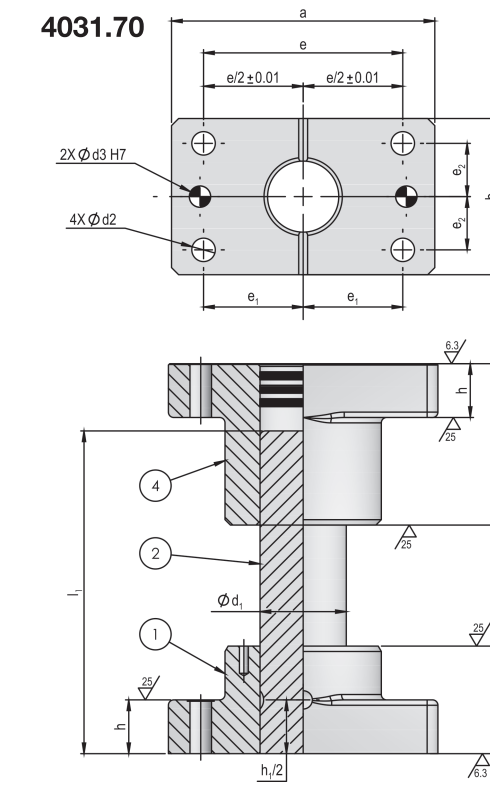
- 1.Perpendicularity of guide pillar with reference to retaining flange is $\leq 0.02/100$ length.
- The preload on Ball Cage is as per FIBRO Standards
- Individual Parts may not be interchangeable with other Standard Guide Posts

Ordering Code (example) :

Ball Guide Post with Fixed Retainer = 4031.42.
d1 = 38 mm = 038.
I1 = 300 mm = 300
Order No = 4031.42.038.300

Oilless Guide Post With Dowel Holes

4031.70



4031.70.

d1	25	32	38	50	60	80
d2	9	11	11	14	18	22
d3H7	8	8	10	10	13	16
a	84	100	130	155	190	230
b	48	58	75	90	120	150
e	66	76	100	125	150	190
e1	33	38	50	62.5	75	90
e2	15	18	22	30	40	55
h	20	20	25	25	30	35
h1	30	40	50	65	75	100
h2	45	50	60	85	100	130
Screw Size	M8 x 35	M10 x 40	M10 x 45	M12 x 50	M16 x 60	M20 x 75
Dowel Size	8 x 30	8 x 30	10 x 40	10 x 40	13 x 50	16 x 50

I1						
100	•	•				
110	•	•	•			
120	•	•	•	•		
130	•	•	•	•		
140	•	•	•	•	•	
150	•	•	•	•	•	
160	•	•	•	•	•	
170	•	•	•	•	•	
180	•	•	•	•	•	•
200	•	•	•	•	•	•
220	•	•	•	•	•	•
250	•	•	•	•	•	•
280	•	•	•	•	•	•
300	•	•	•	•	•	•
350	•	•	•	•	•	•
400	•	•	•	•	•	•
450	•	•	•	•	•	•

Execution :

Oilless Guide Post consisting of:

Oilless Guide Flange, Guide Pillar, Retaining Flange, Hexagon Socket Head Cap Screws, DIN 912/ISO 4762, Dowel Pins with Internal Extracting Thread ~ ISO 8735

Material :

Guide Bush :
Special Cast Iron with non liquid Lubricant

Guide Pillar :
Steel, surface hardened
Surface hardness: 60 + 3 HRC
Hardness penetration depth: 2 + 1.6 mm

Retaining Bush :
Special Cast Iron with Positive Locking

Note:

Perpendicularity of guide pillar with reference to retaining flange is $< 0.02/100$ length.

Ordering Code (example) :

Oilless Guide Post = 4031.70.
d1 = 50 mm = 050.
I1 = 200 mm = 200
Order No = 4031.70.050.200